

CATALOG LISTING

BZ-RW9223312

PAGE 1 OF 1

REPLACES

RELEASE NO. PR-8591

CHECK

CHECK

17 SEP 99

JAF

CHECK

17 SEP 99

DCS

DRAWN

M

6

A

CO-94212E

DCS

17 SEP 99

B

203222

CSL

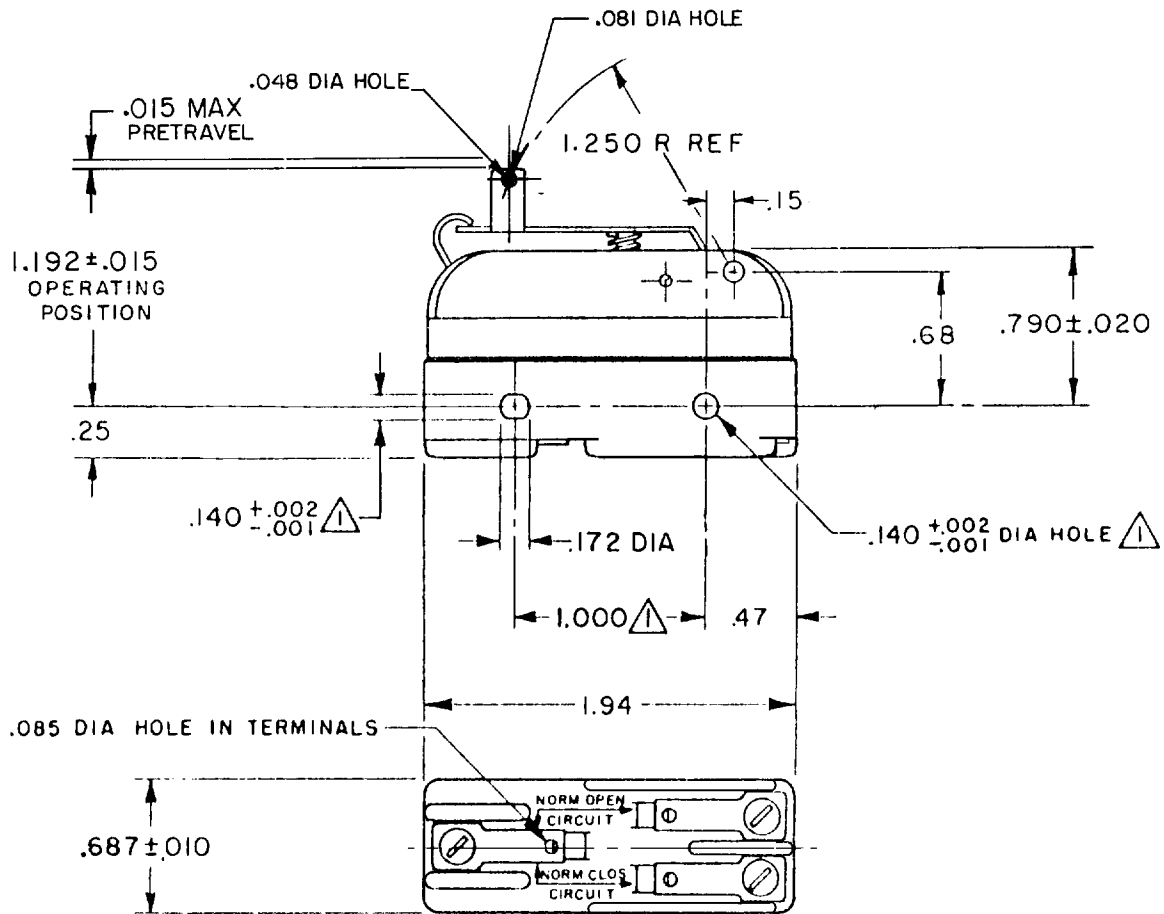
6 JUN 01

C

0011943

VKR

23MAR05



NOTE -
 ▲ - MOUNTING HOLES WILL ACCEPT PINS OR SCREWS
 OF .139 MAX DIA ON 1.000 ± .002 CENTERS
 2 - PLASTIC PARTS ARE MADE OF MINERAL FILLED PHENOLICS

THIS DRAWING COVERS A PROPRIETARY ITEM AND IS THE PROPERTY OF MICRO SWITCH, A DIVISION OF HONEYWELL. THIS DRAWING IS NOT TO BE COPIED OR USED WITHOUT THE APPROVAL OF MICRO SWITCH.

THIRD ANGLE PROJECTION

CHARACTERISTICS	ELECTRICAL DATA	SCALE FULL	DO NOT SCALE PRINT
OPERATING FORCE - - - - - 12 OZ MAX	CONTACT ARRANGEMENT	UNLESS OTHERWISE SPECIFIED TOLERANCES ARE	
RELEASE FORCE - - - - - 4 OZ MIN	S P D T		
DIFFERENTIAL TRAVEL - - .0005 - .0010	L95		
OVERTRAVEL - - - - - .100 MIN	10A 125, 250 OR 480 VAC 1/8HP 125 VAC, 1/4HP 250 VAC		
	L288		
	CE	ONE PLACE (.0) ±.030	
	AL	TWO PLACE (.00) ±.015	
	SP	THREE PLACE (.000) ±.005	
		ANGLES	±
		WEIGHT	

Mouser Electronics

Authorized Distributor

Click to View Pricing, Inventory, Delivery & Lifecycle Information:

[Honeywell:](#)

[BZ-RW9223312](#)