

CATALOG LISTING

AJH5000

PAGE 1 OF 1

**DRAWING
NUMBER**

4

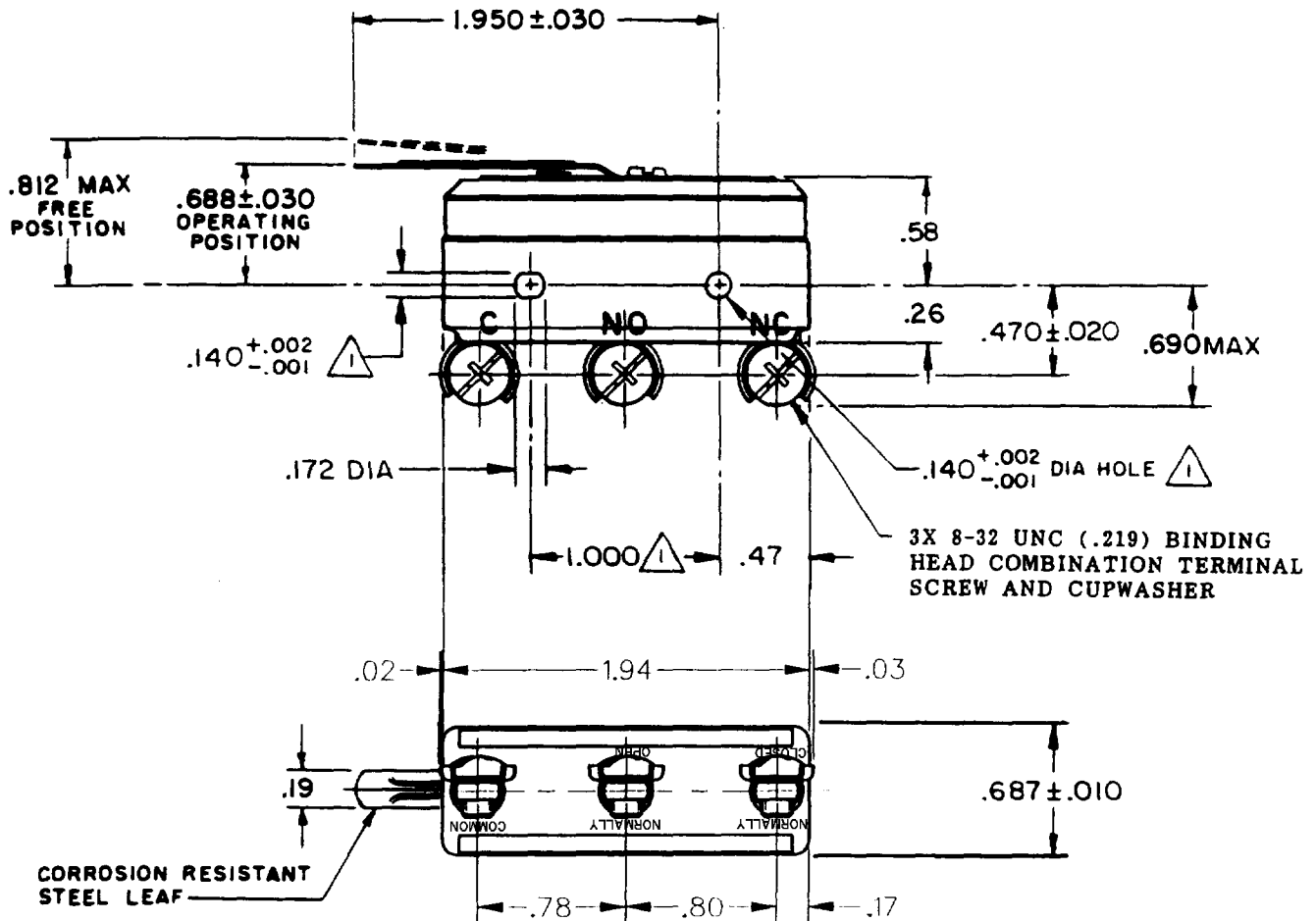
IN

REVISIONS


A	CO16851
9	6 C H MARCH 63
B	CO- 73287-G
	J A L 20 OCT 93
C	CO- 75367B
	K D R 3 MAR 94
D	CO- 77863
	G J W 3 MAY 96
E	CO93346
	D L T 9 SEP 98
F	0018004
	T S G 18 JAN 06

FORMTEK





FO-50378



NOTE

 MOUNTING HOLES WILL ACCEPT PINS OR SCREWS
OF .139 MAX DIA ON $1.000 \pm .002$ CENTERS

THIS DRAWING COVERS A PROPRIETARY ITEM AND IS THE PROPERTY OF MICRO SWITCH, A DIVISION OF MINNEAPOLIS-HONEYWELL REGULATOR CO. THIS DRAWING IS NOT TO BE COPIED OR USED WITHOUT THE APPROVAL OF MICRO SWITCH.

CHARACTERISTICS		ELECTRICAL DATA		SCALE FULL	
OPERATING FORCE ----- 5 OZ MAX		CONTACT ARRANGEMENT S P D T		DO NOT SCALE PRINT	
RELEASE FORCE ----- 1/2 OZ MIN		-L96- 15 A-125, 250, OR 480 VAC 1/2 A-125 VDC; 1/4 A-250 VDC 1/8 HP-125 VAC, 1/4 HP-250 VAC     16A 250V ~ T85 5E4		UNLESS OTHERWISE SPECIFIED DIMENSIONS ARE IN INCHES TOLERANCES ARE:	
DIFFERENTIAL TRAVEL ----- .050 MAX				ONE PLACE (.0) ±.030 TWO PLACE (.00) ±.015 THREE PLACE (.000) ±.005 ANGLES ±	
DO NOT OVERTRAVEL MORE THAN ----- .062				WEIGHT .063 LB	

Mouser Electronics

Authorized Distributor

Click to View Pricing, Inventory, Delivery & Lifecycle Information:

[Honeywell:](#)

[BZ-2RL-P4](#)