

**MICRO SWITCH**

A DIVISION OF MINNEAPOLIS-HONEYWELL REGULATOR COMPANY  
FED. MFR. CODE 91929

**SWITCH - BASIC**

CATALOG LISTING

**BA - 2RVT**

**ABP0500**

**BA - 2RVT**  
PAGE 1 OF 1

**M**

DRAWING  
NUMBER

7

ISSUE

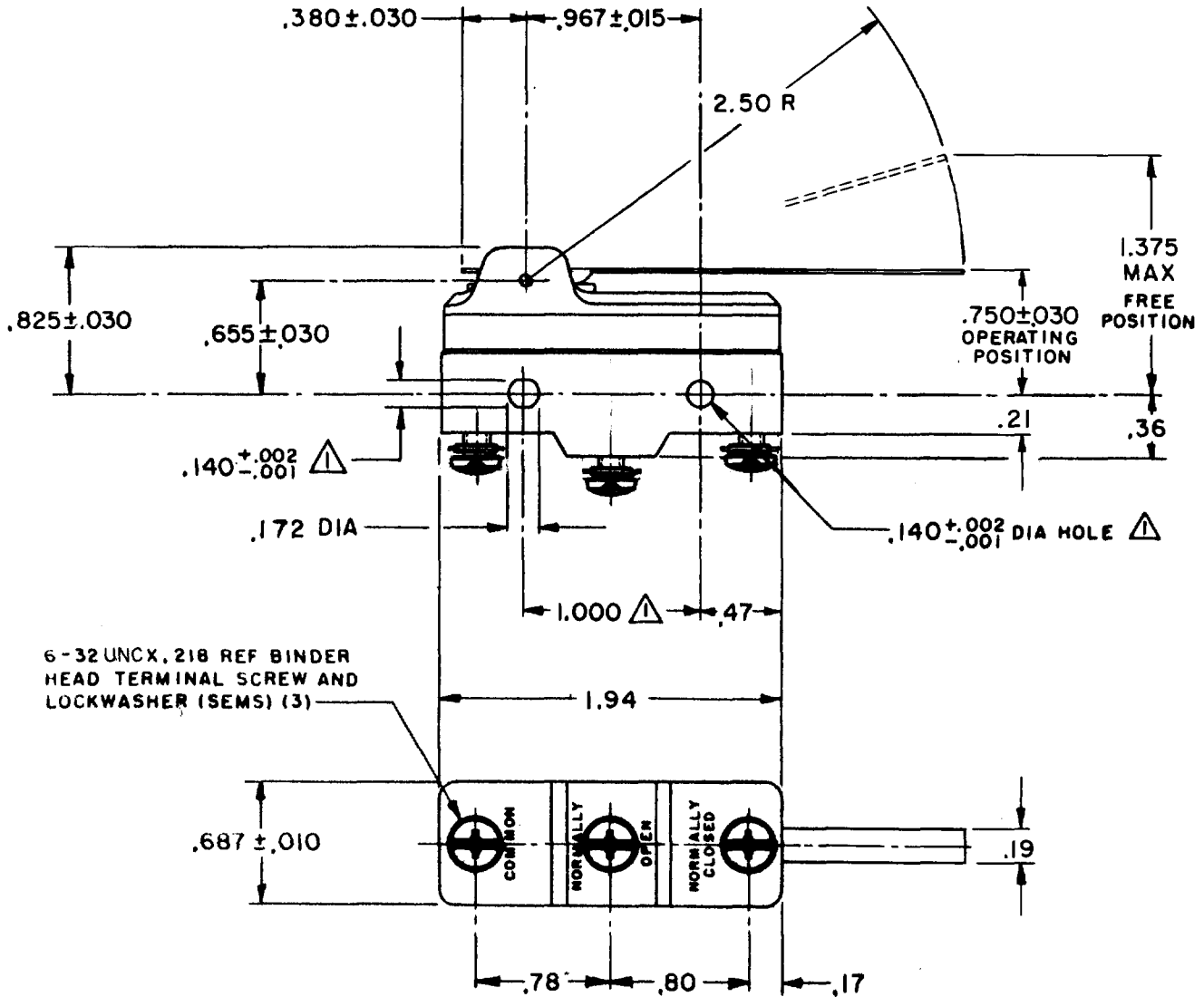
REPLACES

RELEASE NO.

CHECK

**REVISIONS**

A	CO	15663	18 JAN 06
	GCH	22 DEC 61	
B	CO	0034312	18 JAN 06
	P	21 APR 73	
C	CO	69351-D	18 JUL 91
	JWB	18 JUL 91	
D	CO	77590	8 JUN 94
	SAD	8 JUN 94	
E	CO	093346	26 AUG 98
	DLT	26 AUG 98	
F	CO	0018387	18 JAN 06
	TSG	18 JAN 06	



**NOTE**

△ - MOUNTING HOLES WILL ACCEPT PINS OR SCREWS OF .139 MAX DIA ON 1.000 ± .002 CENTERS

THIS DRAWING COVERS A PROPRIETARY ITEM AND IS THE PROPERTY OF MICRO SWITCH, A DIVISION OF MINNEAPOLIS-HONEYWELL REGULATOR CO. THIS DRAWING IS NOT TO BE COPIED OR USED WITHOUT THE APPROVAL OF MICRO SWITCH.

**CHARACTERISTICS**

OPERATING FORCE ----- 2 1/2 OZ MAX  
RELEASE FORCE ----- 1/2 OZ MIN  
PRETRAVEL ----- .625 MAX  
DIFFERENTIAL TRAVEL ----- .109 MAX  
OVERTRAVEL ----- .078 MIN

**ELECTRICAL DATA**

CONTACT ARRANGEMENT  
S P D T

L23 20A - 125, 250 OR 480 VAC  
10A - 125 VAC "L"  
1HP - 125 VAC, 2HP - 250 VAC  
1/2A - 125 VDC, 1/4A - 250 VDC

L288  
L308  
L315



20(3)A 250V ~ T85 5E4

SCALE ----- FULL

DO NOT SCALE PRINT

UNLESS OTHERWISE SPECIFIED  
DIMENSIONS ARE IN INCHES  
**TOLERANCES ARE:**  
ONE PLACE (.0) ±.030  
TWO PLACE (.00) ±.015  
THREE PLACE (.000) ±.005  
ANGLES ±

WEIGHT

FORMTEK

FO-50378

DRAWN

GCH 22 DEC 61

CHECK DAW

CHECK

RJ

18 JAN 06

18 JAN 06

CHECK

18 JAN 06

18 JAN 06

18 JAN 06

18 JAN 06

18 JAN 06

18 JAN 06

18 JAN 06

18 JAN 06

18 JAN 06

18 JAN 06

18 JAN 06

18 JAN 06

# Mouser Electronics

Authorized Distributor

Click to View Pricing, Inventory, Delivery & Lifecycle Information:

[Honeywell:](#)

[BA-2RVT](#)