

MICRO SWITCH

FREEPORT ILLINOIS, U.S.A
A DIVISION OF HONEYWELL
FED. MFG. CODE 91929

SWITCH-BASIC

CATALOG LISTING

YZ-RX58-D5

YZ-RX58-D5

M

DRAWING
NUMBER

3

ISSUE

RELEASE NO. PR-15024

REPLACES X85318-YZ

CHECK

CHECK

REVISIONS

CO	77592
DAW	15 AUG 94
A	0001191
JLH	20AUG03

CHECK

28 AUG 86

CHECK

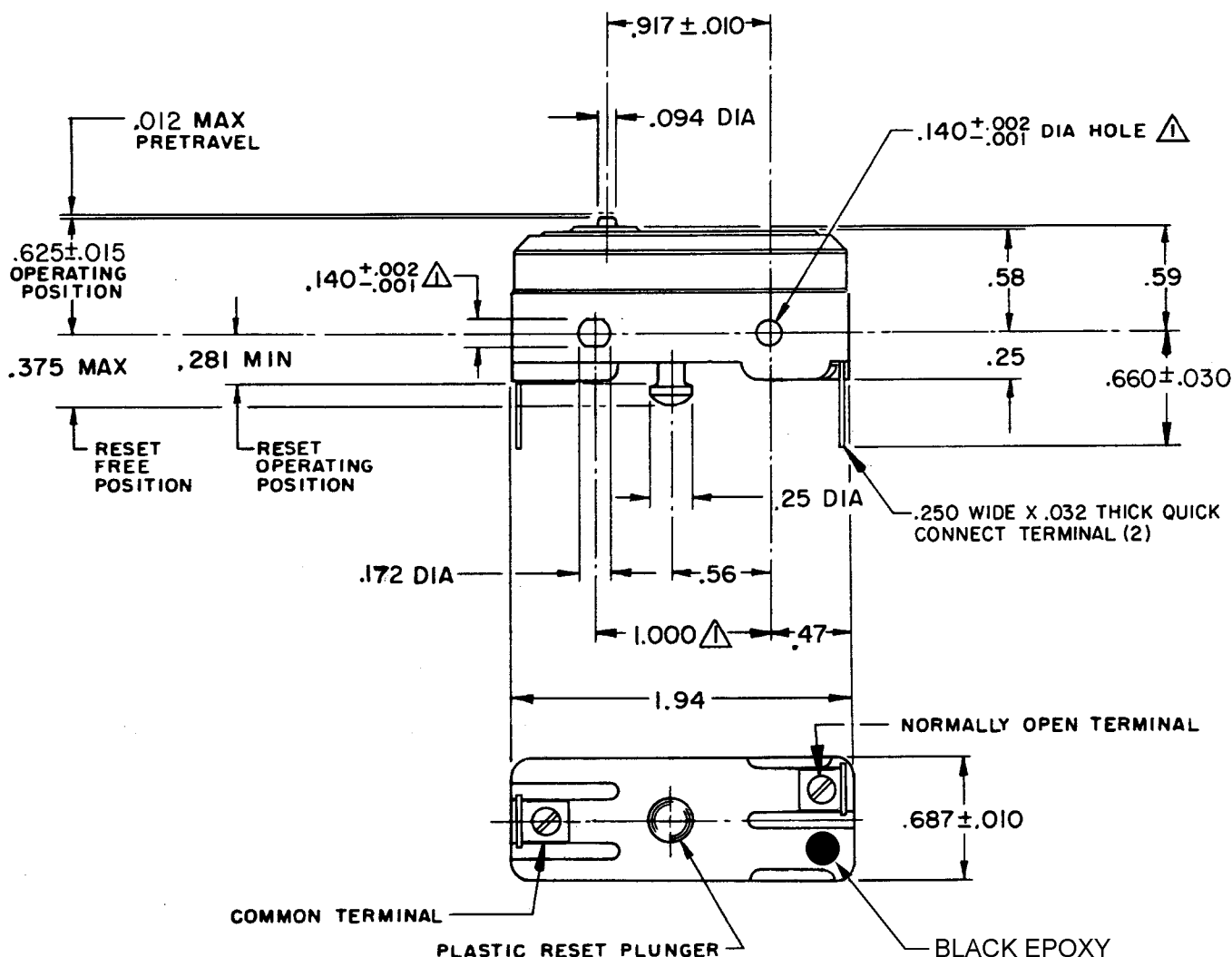
CHECK

CHECK

CHECK

CHECK

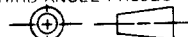
RASTER



NOTE -
▲ - MOUNTING HOLES WILL ACCEPT PINS OR SCREWS
OF .139 MAX DIA ON 1.000 ± .002 CENTERS

THIS DRAWING COVERS A PROPRIETARY ITEM AND IS THE PROPERTY OF MICRO SWITCH, A DIVISION OF HONEYWELL. THIS DRAWING IS NOT TO BE COPIED OR USED WITHOUT THE APPROVAL OF MICRO SWITCH.

THIRD ANGLE PROJECTION



CHARACTERISTICS

OPERATING FORCE----- 4 OZ MAX
OVERTRAVEL----- .005 MIN

RESET CHARACTERISTICS

OPERATING FORCE----- 2-10 OZ
OVERTRAVEL----- .015 MIN

ELECTRICAL DATA

CONTACT ARRANGEMENT
SINGLE POLE NORMALLY OPEN
MAINTAINED CONTACT

L67

15A 125, 250 OR 480 VAC
1/4 HP 125 VAC, 1/2 HP 250 VAC
1/2A 125 VDC, 1/4A 250 VDC



SCALE FULL

DO NOT SCALE PRINT

TOLERANCES
APPLY TO DESIGN UNITS. CONVERSIONS ARE ONLY FOR
REFERENCE. UNLESS NOTED, TOLERANCES ARE ±

DIM.	TOL.	DIM.	TOL.
mm	mm/in	in	mm/in
NO PLACES	X	1/.04	
ONE PLACE	X,X	0.4/.018	X,X
TWO PLACES	X,XX	0.15/.008	X,XX
THREE PLACES	X,XXX		X,XXX
ANGLES			

SI METRIC

US CUSTOMARY

DESIGN UNITS



WEIGHT

Mouser Electronics

Authorized Distributor

Click to View Pricing, Inventory, Delivery & Lifecycle Information:

[Honeywell:](#)

[YZ-RX58-D5](#)