

# MICRO SWITCH

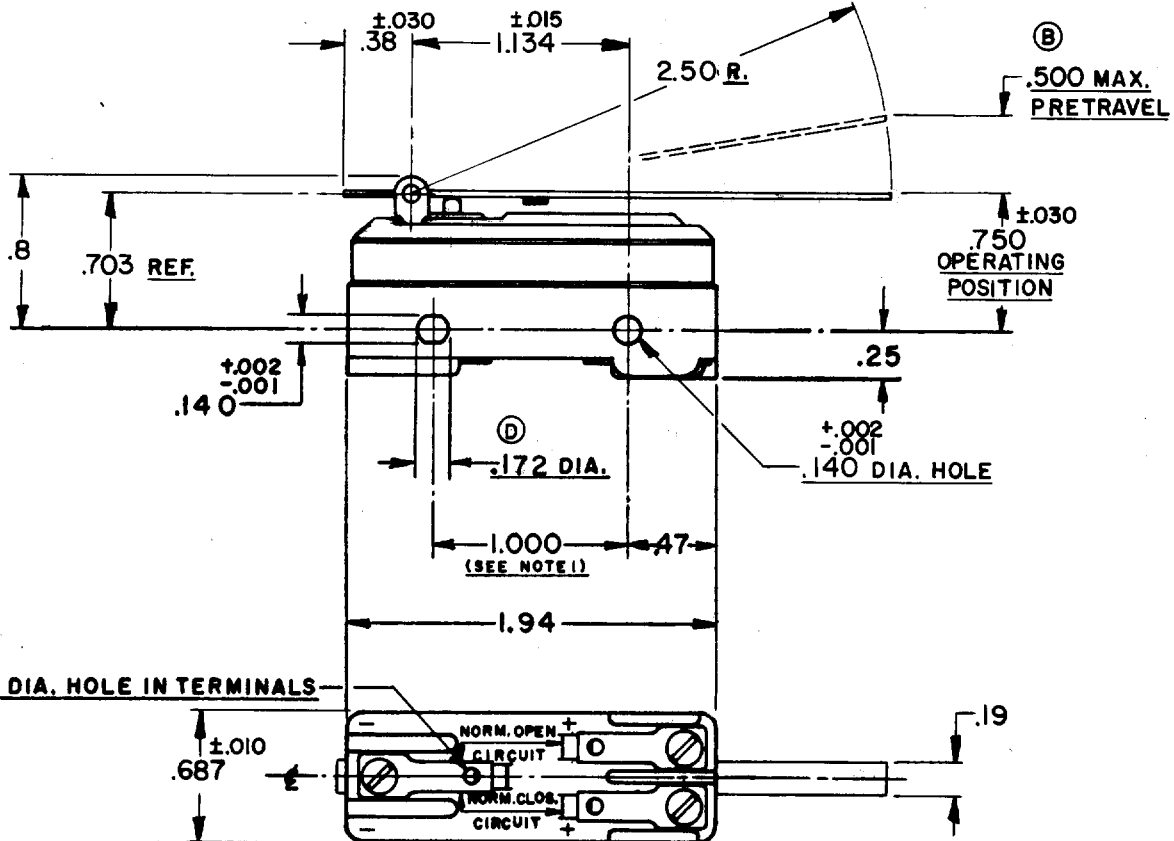
A DIVISION OF MINNEAPOLIS-HONEYWELL REGULATOR COMPANY  
ROSBURY, MASSACHUSETTS

FED. MFR. CODE 91929

## SWITCH - BASIC

CATALOG LISTING

MT-4 RV



### NOTE -

- 1- MOUNTING HOLES WILL ACCEPT PINS OR SCREWS OF .139 MAX. DIA. ON 1.000  $\pm$  .002 CENTERS.
- 2- FOR BEST RESULTS EITHER POLARIZE THE SWITCH WITH COMMON TERMINAL BEING OF NEGATIVE POLARITY OR MOUNT THE SWITCH WITH BRASS SCREWS AND SPACE AT LEAST .250 FROM MAGNETIC MATERIALS.

THIS DRAWING COVERS A PROPRIETARY ITEM AND IS THE PROPERTY OF MICRO SWITCH, A DIVISION OF HONEYWELL. THIS DRAWING IS NOT TO BE COPIED OR USED WITHOUT THE APPROVAL OF MICRO SWITCH.

### CHARACTERISTICS

OPERATING FORCE ----- 2 OZ. MAX.  
RELEASE FORCE ----- 1/2 OZ. MIN.  
DIFFERENTIAL TRAVEL ----- .085 MAX.  
OVERTRAVEL ----- .047 MIN.

### ELECTRICAL DATA

CONTACT ARRANGEMENT  
S.P.D.T.

NON-POLARIZED	VOLTS D-C 125 250	MOTOR 1/4 HP +	RESISTIVE 10 AMPS 1.5 TO 3.0 *
POLARIZED OR NON-MAGNETICALLY MOUNTED	VOLTS D-C 125 250	MOTOR 1/2 HP +	RESISTIVE 10 AMPS 1.5 TO 3.0 *

\* NOT SUITABLE FOR USE AT LESS THAN 1.5 AMPS  
+ WILL NOT BREAK LOCKED ROTOR CURRENT

UND. LAB. INC. LISTED RATING (NON-POLARIZED)  
- 115V - 10A - 125VDC OR AC 1/4 HP - 125 VDC

### SCALE FULL

DO NOT SCALE PRINT

UNLESS OTHERWISE SPECIFIED  
DIMENSIONS ARE IN INCHES

**TOLERANCES ARE:**  
ONE PLACE (.0)  $\pm$  .030  
TWO PLACE (.00)  $\pm$  .015  
THREE PLACE (.000)  $\pm$  .005  
ANGLES  $\pm$

WEIGHT .071 LB.

MT-4RV

M

DRAWING NUMBER

12

ISSUE

2

REPLACES

RELEASE NO.

CHECK

REVISIONS

A C.O. 9799

C.M.A.

9 AUG. 55

B C.O. 11613

N.H.L.

31 JULY 57

C C.O. 12369

K.L.B.

11 DEC. 57

D C.O. 13960

M.B.F.

22 OCT 59

E C.O. 35255

D.B.W.

12 MAY 75

F C.O. 46819

W.J.M.

26 NOV 79

CHECK

9 AUG. 55

C.M.A.

9 AUG. 55

CHECK

9 AUG. 55

C.M.A.

9 AUG. 55

CHECK

9 AUG. 55

C.M.A.

9 AUG. 55

# Mouser Electronics

Authorized Distributor

Click to View Pricing, Inventory, Delivery & Lifecycle Information:

[Honeywell:](#)

[MT-4RV](#)