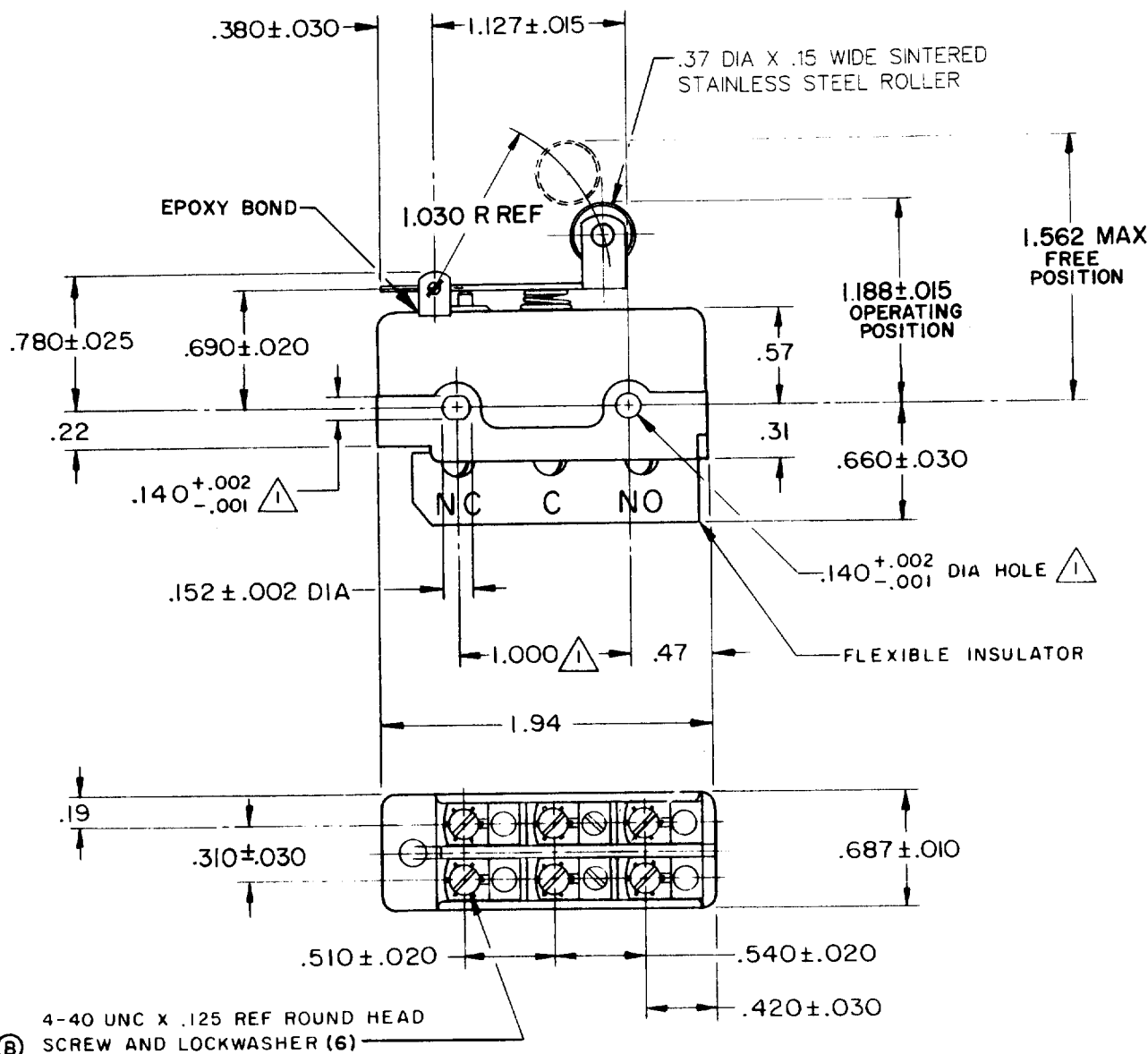


# SWITCH-BASIC

CATALOG LISTING  
**DT-2RV22-A7**



NOTE -  
MOUNTING HOLES WILL ACCEPT PINS OR SCREWS  
OF .139 MAX DIA ON 1.000±.002 CENTERS

THIS DRAWING COVERS A PROPRIETARY ITEM AND IS THE PROPERTY OF MICRO SWITCH, A DIVISION OF MINNEAPOLIS-HONEYWELL REGULATOR CO. THIS DRAWING IS NOT TO BE COPIED OR USED WITHOUT THE APPROVAL OF MICRO SWITCH.

| CHARACTERISTICS                     | ELECTRICAL DATA                   | SCALE FULL  |
|-------------------------------------|-----------------------------------|---|
| OPERATING FORCE ----- 9-14 OZ       | CONTACT ARRANGEMENT<br>D P D T    | DO NOT SCALE PRINT  |
| RELEASE FORCE ----- 3 OZ MIN        | UL LISTED-FILE E12252<br>CODE L59 | UNLESS OTHERWISE NOTED<br>DIMENSIONS ARE IN INCHES                                    |
| DIFFERENTIAL TRAVEL ----- .195-.305 | 10A-125 OR 250 VAC                | <b>TOLERANCES ARE:</b>  |
| OVERTRAVEL ----- .031 MIN           | 0.3A-125 VDC; 0.15A-250 VDC       | ONE PLACE (.0) ±.030<br>TWO PLACE (.00) ±.015<br>THREE PLACE (.000) ±.005<br>ANGLES ± |
|                                     | SR                                | WEIGHT .085 LB  |

DT-2RV22-A7

DRAWING  
NUMBER

ISSUE

78

13

13

13

13

13

13

13

13

13

13

13

13

13

13

13

13

13

13

13

13

13

13

13

13

# Mouser Electronics

Authorized Distributor

Click to View Pricing, Inventory, Delivery & Lifecycle Information:

[Honeywell:](#)

[DT-2RV22-A7](#)