

# MICRO SWITCH

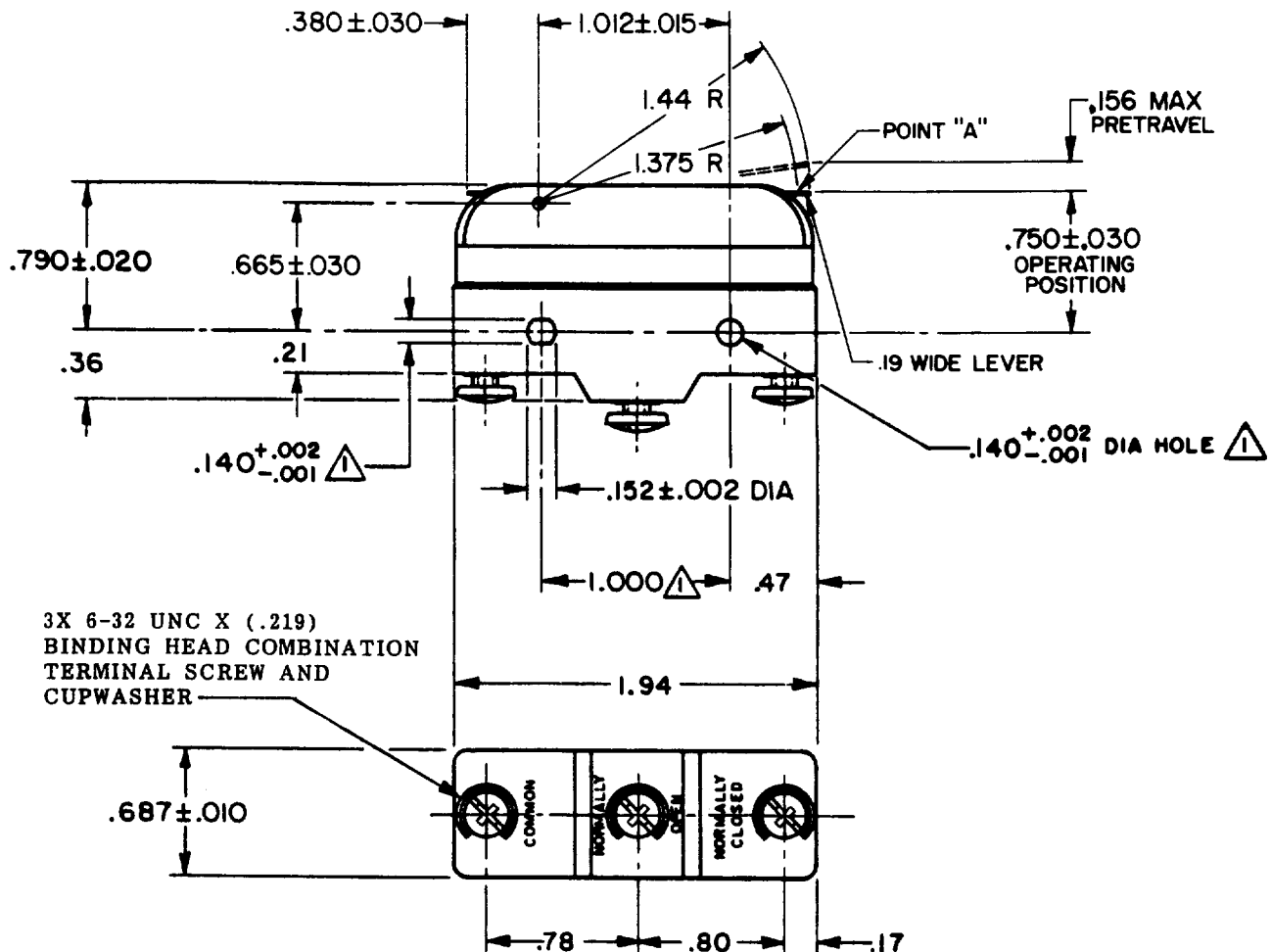
FREEPORT ILLINOIS, U.S.A  
A DIVISION OF HONEYWELL

FED. MFG. CODE 91929

## SWITCH-BASIC

CATALOG LISTING

BZ-RW84414-A2

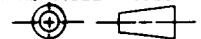


### NOTE -

- 1 - MOUNTING HOLES WILL ACCEPT PINS OR SCREWS OF  $.139$  MAX. DIA. ON  $1.000 \pm .002$  CENTERS
- 2 - FORCES MEASURED WITH LEVER IN VERTICAL POSITION AT POINT "A" WITH CONTACT END OF SWITCH DOWN

THIS DRAWING COVERS A PROPRIETARY ITEM AND IS THE PROPERTY OF MICRO SWITCH, A DIVISION OF HONEYWELL. THIS DRAWING IS NOT TO BE COPIED OR USED WITHOUT THE APPROVAL OF MICRO SWITCH.

THIRD ANGLE PROJECTION



### CHARACTERISTICS AT POINT "A"

OPERATING FORCE-----10 GRAM MAX  $\triangle 2$

DIFFERENTIAL TRAVEL----- $.002$ -. $.009$

OVERTRAVEL----- $.125$  MIN

### ELECTRICAL DATA

CONTACT ARRANGEMENT  
S P D T

L103 15A 125, 250 OR 480 VAC  
1/8HP 125 VAC, 1/4HP 250 VAC

L288  
L299  
L306



16A 250V  $\sim$  T85 5E4

SCALE FULL

DO NOT SCALE PRINT

### TOLERANCES

APPLY TO DESIGN UNITS. CONVERSIONS ARE ONLY FOR REFERENCE. UNLESS NOTED, TOLERANCES ARE  $\pm$

	DIM. mm	TOL. mm/in	DIM. in	TOL. mm/in
NO PLACES	X	1/.04	X	0.8/.03
ONE PLACE	X.X	0.47/.018	X.X	0.38/.015
TWO PLACES	X.XX	0.16/.008	X.XX	0.13/.005
THREE PLACES	X.XXX		X.XXX	

DESIGN UNITS ☐ SI METRIC ☐ US CUSTOMARY

WEIGHT .073 LB.

CATALOG LISTING  
BZ-RW84414-A2  
PAGE 1 OF 1

M

ISSUE  
3

### REVISIONS

A	CO-73287-J	JAL	22 NOV 93
B	203155	CSL	24 MAY 01

FO-52848-A

DRAWN

REPLACES

RELEASE NO. PR-5073

CHECK

CHECK

CHECK

CHECK

K P K123 JUN 75

# Mouser Electronics

Authorized Distributor

Click to View Pricing, Inventory, Delivery & Lifecycle Information:

[Honeywell:](#)

[BZ-RW84414-A2](#)