

MICRO SWITCH

FREEMONT ILLINOIS, U.S.A.
A DIVISION OF HONEYWELL INC.
FED. MFG. CODE 91929

SWITCH - BASIC

CATALOG LISTING

BZ-RW8435149-D6

BZ-RW8435149-D6

DRAWING
NUMBER

ISSUE

4

8

REPLACES

PR-16797

CHECK

REVISIONS

A	C068276
7	JAP DEC 90
B	C080938
7	DLT JUN 95
C	C082886
23	JALA APR 96

CHECK

12 OCT 86

DCS

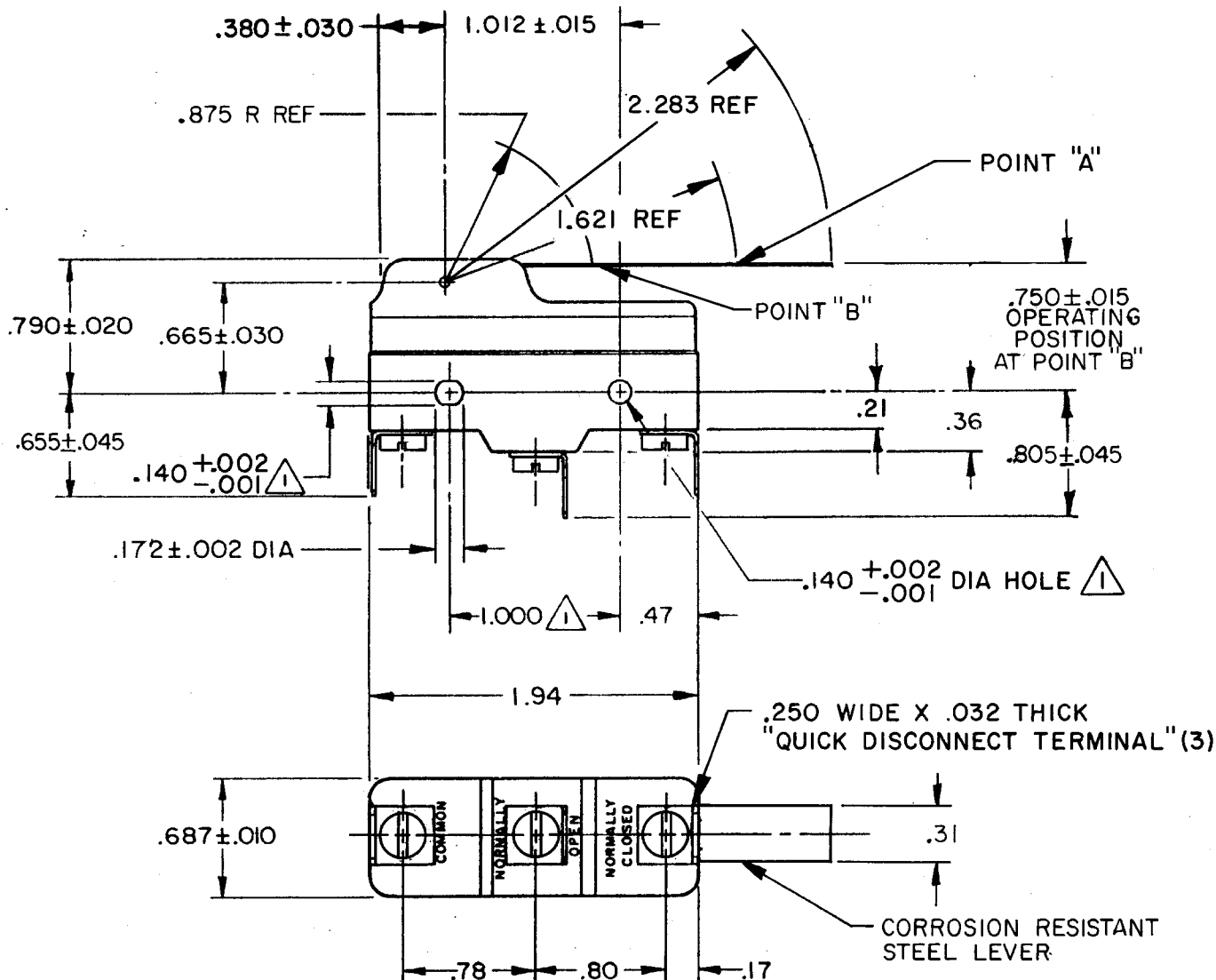
CHECK

88

PIIOCT

J A

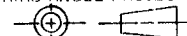
FO-52848-B



NOTE
1 MOUNTING HOLES WILL ACCEPT PINS OR SCREWS OF
.139 MAX DIA ON $1.000 \pm .002$ CENTERS

THIS DRAWING COVERS A PROPRIETARY ITEM AND IS THE PROPERTY OF MICRO SWITCH, A DIVISION OF HONEYWELL. THIS DRAWING IS NOT TO BE COPIED OR USED WITHOUT THE APPROVAL OF MICRO SWITCH.

THIRD ANGLE PROJECTION



CHARACTERISTICS POINT "A"

OPERATING FORCE --- 6 GRAMS MAX
DIFFERENTIAL FORCE --- 1 1/2 GRAMS MAX

DIFFERENTIAL TRAVEL --- .006 MAX
OVERTRAVEL --- .141 MIN

ELECTRICAL DATA

CONTACT ARRANGEMENT
S P D T

L 169

10A 125, 250, 277 VAC
1/8 HP 125 VAC, 1/4 HP 250 VAC



SCALE FULL

DO NOT
SCALE PRINT

UNLESS OTHERWISE SPECIFIED
TOLERANCES ARE

ONE PLACE (.0) $\pm .030$
TWO PLACE (.00) $\pm .015$
THREE PLACE (.000) $\pm .005$
ANGLES \pm

WEIGHT .073 LB

Mouser Electronics

Authorized Distributor

Click to View Pricing, Inventory, Delivery & Lifecycle Information:

[Honeywell:](#)

[BZ-RW8435149-D6](#)