

MICRO SWITCH

FREEPORT ILLINOIS, U.S.A
A DIVISION OF HONEYWELL INC.
FED. MFG. CODE 91929

SWITCH-BASIC

CATALOG LISTING

BZ-RMX4

BZ-RMX4

M

DRAWING
NUMBER

X

10

ISSUE

X

REPLACES X45688-BZ

RELEASE NO. PR-3361

CHECK

CHECK

CHECK

CHECK

CHECK

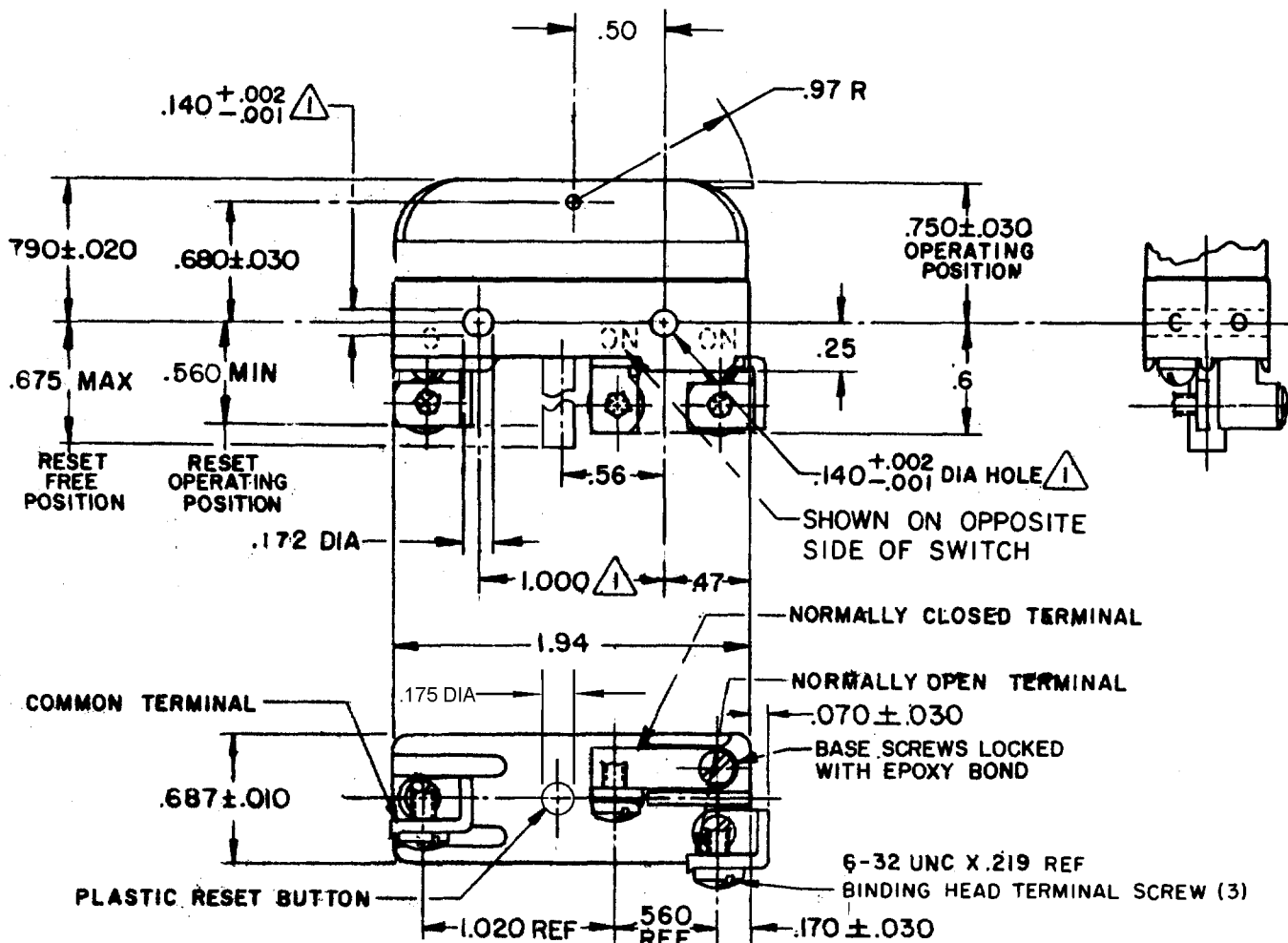
CHECK

CHECK

CHECK

CHECK

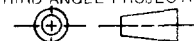
CHECK



NOTE
MOUNTING HOLES WILL ACCEPT PINS OR SCREWS OF
.139 MAX DIA ON $1.000 \pm .002$ CENTERS

THIS DRAWING COVERS A PROPRIETARY ITEM AND IS THE PROPERTY OF MICRO SWITCH, A DIVISION OF HONEYWELL. THIS DRAWING IS NOT TO BE COPIED OR USED WITHOUT THE APPROVAL OF MICRO SWITCH.

THIRD ANGLE PROJECTION



CHARACTERISTICS

OVERTRAVEL — — — — — .062 MIN

RESET CHARACTERISTICS
(WITH LEVER HELD DOWNWARD)

OPERATING FORCE — — — — — 2-10 OZ

OVERTRAVEL — — — — — .015 MIN

ELECTRICAL DATA

CONTACT ARRANGEMENT
S P D T (MAINTAINED CONTACT)

L67

15A 125, 250 OR 480 VAC
1/4 HP 125 VAC, 1/2 HP 250 VAC
1/2A 125 VDC, 1/4A 250 VDC



SCALE FULL

DO NOT
SCALE PRINT

UNLESS OTHERWISE SPECIFIED
TOLERANCES ARE

ONE PLACE (.0) $\pm .030$

TWO PLACE (.00) $\pm .015$

THREE PLACE (.000) $\pm .005$

ANGLES \pm

RAW MATERIAL — COMMERCIAL STANDARD

DIMENSIONS ARE IN INCHES AND ARE
TO BE MET BEFORE PROTECTIVE
COATINGS ARE APPLIED

MICRO SWITCH STANDARDS APPLY

WEIGHT

FO-52848-B

DRAWN

KJS 22 OCT 84

Mouser Electronics

Authorized Distributor

Click to View Pricing, Inventory, Delivery & Lifecycle Information:

[Honeywell:](#)

[BZ-RMX4](#)