

MICRO SWITCH

FREEPORT ILLINOIS, U.S.A.
A DIVISION OF HONEYWELL
FED. MFG. CODE 91929

SWITCH-BASIC

CATALOG LISTING

BZ-2RW8435145 T

MBZ-2RW8435145 T
PAGE 1 OF 1

DRAWING
NUMBER

5

ISSUE

REPLACES X77885-8Z

RELEASE NO. PR-12690

CHECK

CHECK

11 JAN 84

KAG

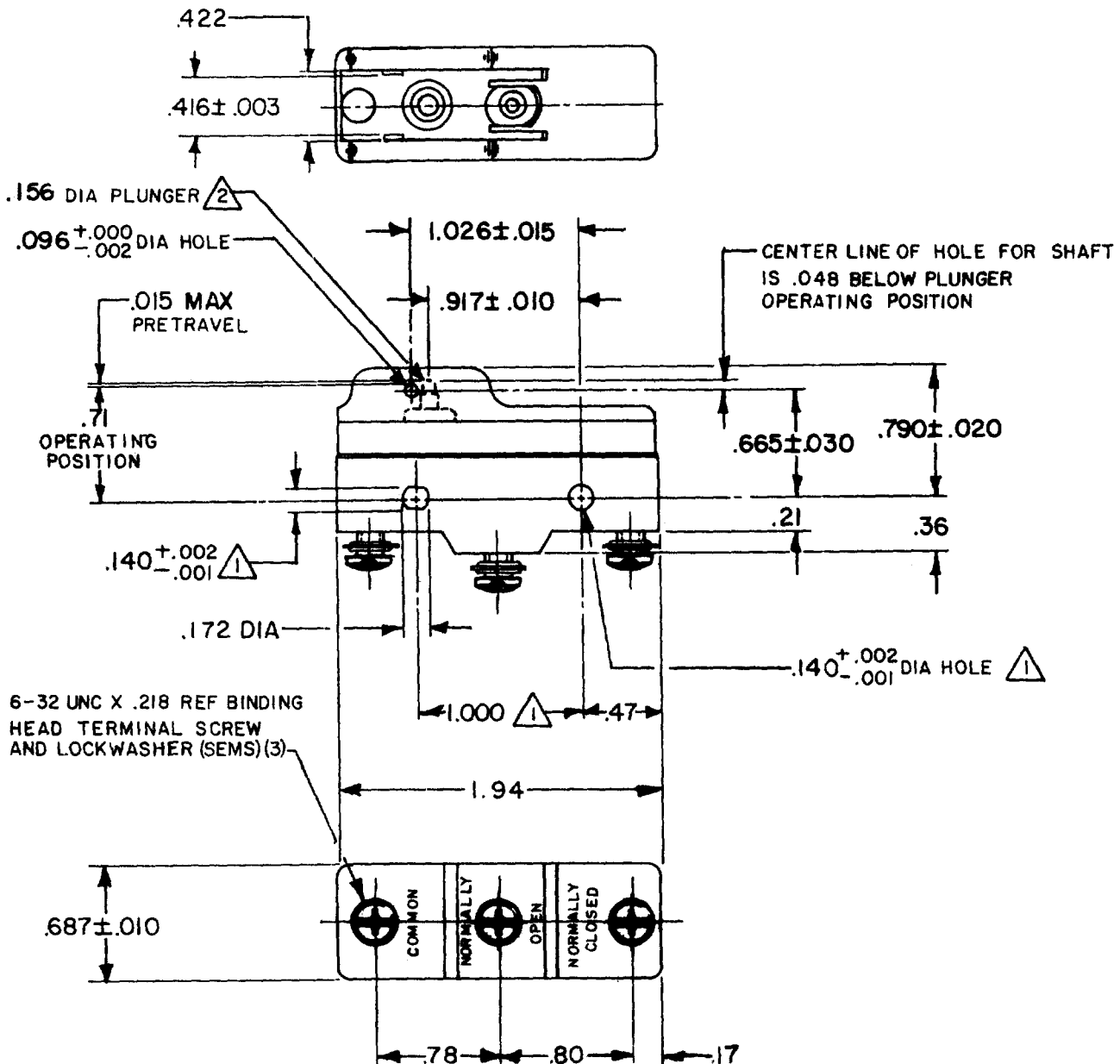
CHECK

10 JAN 84

JAS

REVISIONS

| | |
|------|-----------|
| A | C080986 |
| JALA | 26 JUN 95 |
| B | C093346 |
| DLT | 14 AUG 98 |

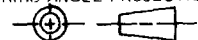


NOTES

- 1 MOUNTING HOLES WILL ACCEPT PINS OR SCREWS OF .139 MAX DIA ON 1.000 ± .002 CENTERS
- 2 PLUNGERS SHOULD NOT BE INTERCHANGED AMONG SWITCHES
- 3 - SHAFT (1) FURNISHED UNASSEMBLED

THIS DRAWING COVERS A PROPRIETARY ITEM AND IS THE PROPERTY OF MICRO SWITCH, A DIVISION OF HONEYWELL. THIS DRAWING IS NOT TO BE COPIED OR USED WITHOUT THE APPROVAL OF MICRO SWITCH.

THIRD ANGLE PROJECTION



CHARACTERISTICS

OPERATING FORCE-----3-5 OZ.

DIFFERENTIAL TRAVEL---.0004-.0020

OVERTRAVEL-----.005 MIN

ELECTRICAL DATA

CONTACT ARRANGEMENT
S P D T

10A 125, 250 OR 480 VAC
1/2 A 125 VDC, 1/4 A 250 VDC

UL CE L288

SCALE FULL

DO NOT SCALE PRINT

TOLERANCES

APPLY TO DESIGN UNITS. CONVERSIONS ARE ONLY FOR REFERENCE. UNLESS NOTED, TOLERANCES ARE ±

| DIM. | TOL. | DIM. | TOL. |
|--------------|---------|-----------|---------|
| mm | mm/in | in | mm/in |
| NO PLACES | X | 1/04 | |
| ONE PLACE | X,X | 0.47/016 | X,X |
| TWO PLACES | X,X,X | 0.157/008 | X,X,X |
| THREE PLACES | X,X,X,X | 0.387/015 | X,X,X,X |
| ANGLES | | 0.13/005 | |

DESIGN UNITS ☐ METRIC ☐ US CUSTOMARY

WEIGHT .073 LB

FORMTEK

DRAWN

Mouser Electronics

Authorized Distributor

Click to View Pricing, Inventory, Delivery & Lifecycle Information:

[Honeywell:](#)

[BZ-2RW8435145T](#)