

**MICRO SWITCH**

A DIVISION OF MINNEAPOLIS-HONEYWELL REGULATOR COMPANY  
PRAIRIE, ILLINOIS

FED. MFR. CODE 91929

# SWITCH - BASIC

CATALOG LISTING

**BZ-2RW80**

DRAWING NUMBER  
**BZ-2RW80**

PAGE 1 OF 1

ISSUE  
**M**

13

REPLACES

RELEASE NO.

CHECK

**REVISIONS**

A	CO	18736	6 CH	6 APRIL 62
B	CO	34306	P K	3 JUN 75
C	CO	46304	R J H	21 NOV 79
D	CO	58037	SMA	1 OCT 85
E	CO	78874	DLT	18 NOV 94
F	CO	93346	DLT	11 SEP 98
G	CO	94212-J	J J A	5 OCT 99

CHECK

17 APR 62

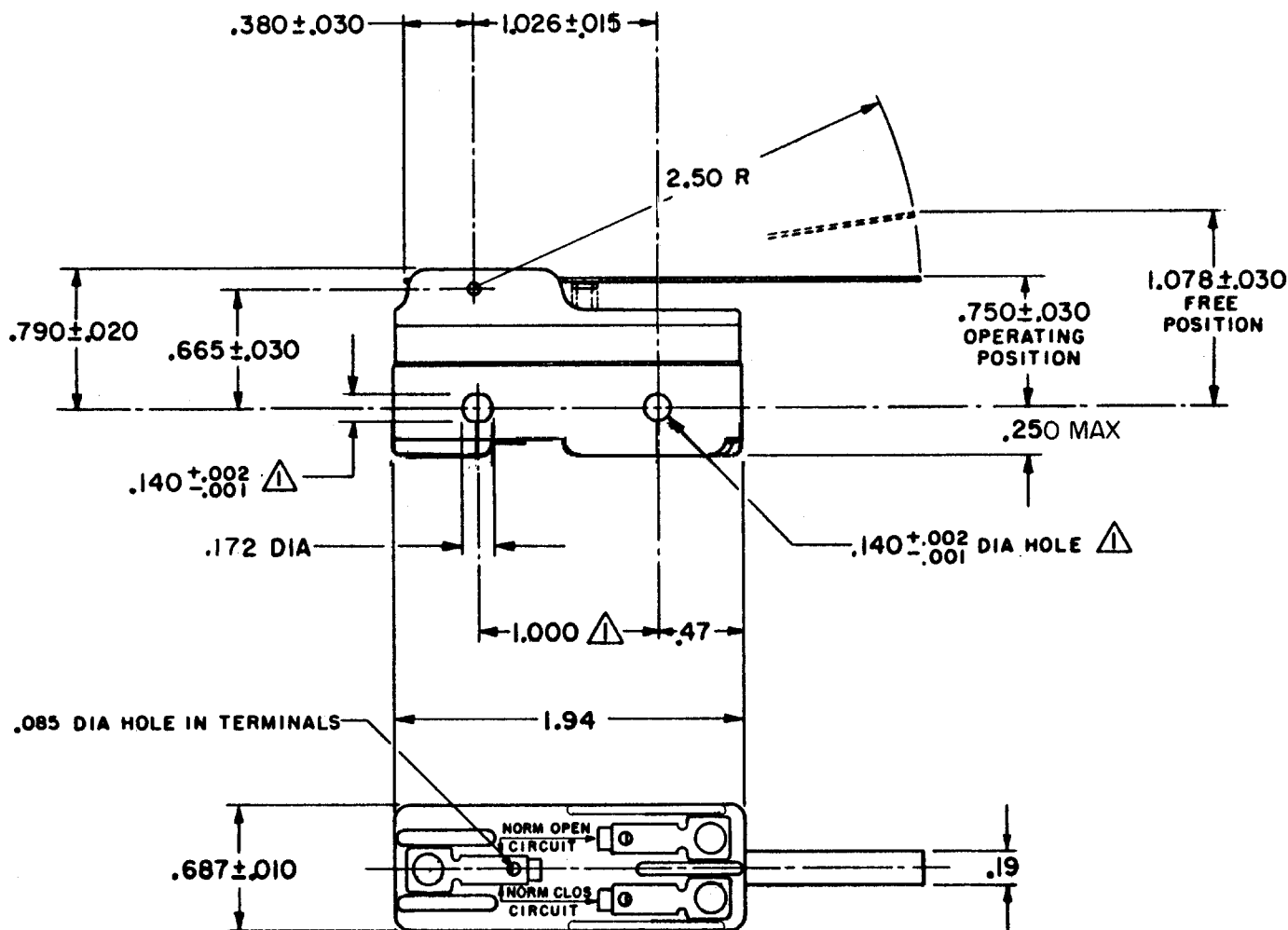
DAW

CHECK

6 APRIL 62

FORMTEK

FO-50378



**NOTE**  
MOUNTING HOLES WILL ACCEPT PINS OR SCREWS  
OF .139 MAX DIA ON 1.000 ± .002 CENTERS.

THIS DRAWING COVERS A PROPRIETARY ITEM AND IS THE PROPERTY OF MICRO SWITCH, A DIVISION OF MINNEAPOLIS-HONEYWELL REGULATOR CO. THIS DRAWING IS NOT TO BE COPIED OR USED WITHOUT THE APPROVAL OF MICRO SWITCH.

CHARACTERISTICS	ELECTRICAL DATA	SCALE FULL
OPERATING FORCE----- 2 1/2 OZ MAX	CONTACT ARRANGEMENT S P D T	DO NOT SCALE PRINT
RELEASE FORCE-----1/2 OZ MIN	UNDERWRITERS' LAB. INC. LISTED RATING -L96- 15 A-125, 250, OR 480 VAC 1/2 A-125 VDC; 1/4 A-250 VDC 1/8 HP-125 VAC; 1/4 HP-250 VAC	UNLESS OTHERWISE SPECIFIED DIMENSIONS ARE IN INCHES <b>TOLERANCES ARE:</b> ONE PLACE (.0) ± .030 TWO PLACE (.00) ± .015 THREE PLACE (.000) ± .005 ANGLES ±
DIFFERENTIAL TRAVEL----- .007-.050	-L288- -L299- -L306-	WEIGHT .060 LB
OVERTRAVEL----- .219 MIN	CE D SP 16A 250V ~ T85 5E4	

# Mouser Electronics

Authorized Distributor

Click to View Pricing, Inventory, Delivery & Lifecycle Information:

[Honeywell:](#)

[BZ-2RW80](#)