

**MICRO SWITCH**FREEPORT, ILLINOIS, U.S.A.
A DIVISION OF HONEYWELL

FED. MFG. CODE 91929

SWITCH - BASIC

CATALOG LISTING

BZ-2R21-A2**BZ-2R21-A2**

PAGE 1 OF 1

MDRAWING
NUMBER

6

ISSUE

REVISIONS

A	CO	15200
W L K		16 MAR 64
B	CO	73287-J
J A L		22 NOV 93
C	CO	77589
K O R		29 MAR 94
D	CO	93346
D L T		12 AUG 98

REPLACES

RELEASE NO.

CHECK

CHECK

CHECK

CHECK

CHECK

CHECK

CHECK

CHECK

CHECK

CHECK

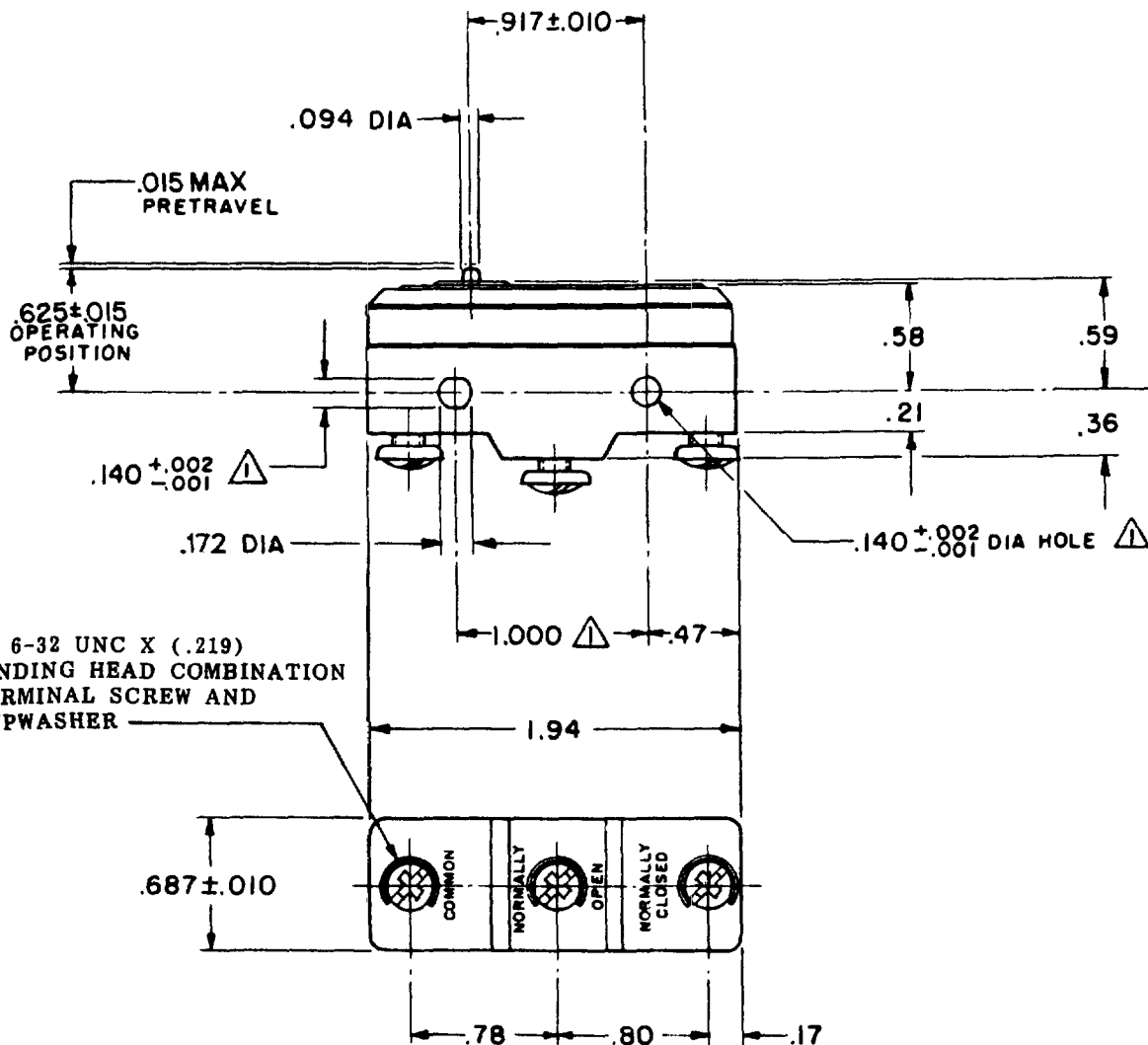
CHECK

CHECK

FORMTEK
FO-80378

DRAWN

W L K 16 MAR 64



NOTE -

△ - MOUNTING HOLES WILL ACCEPT PINS OR SCREWS
OF .139 MAX DIA ON 1.000 ± .002 CENTERS

THIS DRAWING COVERS A PROPRIETARY ITEM AND IS THE PROPERTY OF MICRO SWITCH, A DIVISION OF MINNEAPOLIS-HONEYWELL REGULATOR CO. THIS DRAWING IS NOT TO BE COPIED OR USED WITHOUT THE APPROVAL OF MICRO SWITCH.

CHARACTERISTICS

OPERATING FORCE ----- 3-5 OZ
RELEASE FORCE ----- 2 1/2 OZ MIN
DIFFERENTIAL TRAVEL ----- .0004-.0020
OVERTRAVEL ----- .005 MIN

ELECTRICAL DATA

CONTACT ARRANGEMENT
S P D T

UNDERWRITERS LAB. INC. LISTED RATING
-L9- 10A 125, 250 OR 480 VAC
1/2A 125 VDC, 1/4A 250 VDC
-L 288-

**SCALE FULL**

DO NOT SCALE PRINT

UNLESS OTHERWISE
NOTED

DIMENSIONS ARE IN INCHES

TOLERANCES ARE:

ONE PLACE (.0) ±.030
TWO PLACE (.00) ±.015
THREE PLACE (.000) ±.005
ANGLES ±

WEIGHT .060 LB

Mouser Electronics

Authorized Distributor

Click to View Pricing, Inventory, Delivery & Lifecycle Information:

[Honeywell:](#)

[BZ-2R21-A2](#)