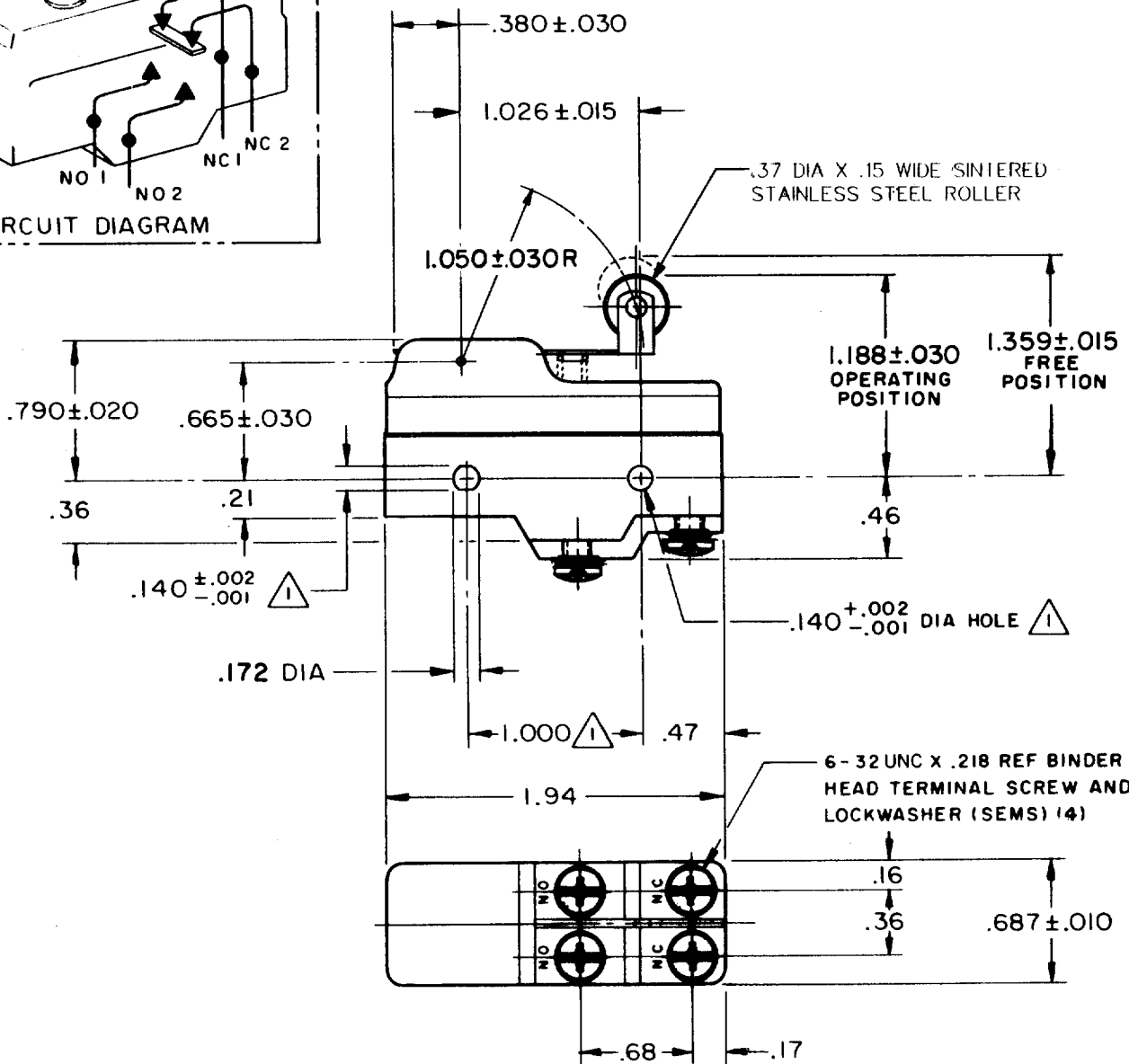
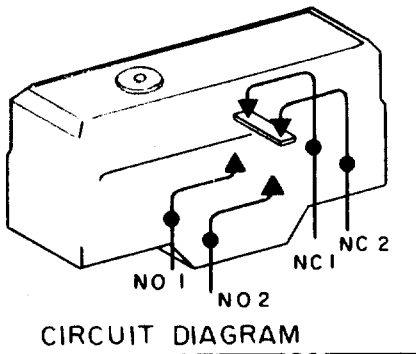


# SWITCH - BASIC



NOTE -  
1 - MOUNTING HOLES WILL ACCEPT PINS OR SCREWS OF .139 MAX DIA ON 1.000 ± .002 CENTERS  
2 - SUITABLE ONLY FOR APPLICATIONS IMPARTING A RAPID STROKE TO THE SWITCH PLUNGER

THIS DRAWING COVERS A PROPRIETARY ITEM AND IS THE PROPERTY OF MICRO SWITCH, A DIVISION OF MINNEAPOLIS-HONEYWELL REGULATOR CO. THIS DRAWING IS NOT TO BE COPIED OR USED WITHOUT THE APPROVAL OF MICRO SWITCH.

CHARACTERISTICS	ELECTRICAL DATA	SCALE FULL
OPERATING FORCE ---- 8 1/2 OZ MAX	CONTACT ARRANGEMENT SEE CIRCUIT DIAGRAM	DO NOT SCALE PRINT
RELEASE FORCE ----- 1 1/2 OZ MIN	UNDERWRITERS' LAB. INC. LISTED RATING 15 A-125, 250, OR 480 VAC -L 73- 1 A-125 VDC; 0.5 A-250 VDC 1/4 HP-125 VAC; 1/2 HP-250 VAC	UNLESS OTHERWISE SPECIFIED DIMENSIONS ARE IN INCHES <b>TOLERANCES ARE:</b> ONE PLACE (.0) ±.030 TWO PLACE (.00) ±.015 THREE PLACE (.000) ±.005 ANGLES ±
DIFFERENTIAL TRAVEL -----.008-.030		WEIGHT
OVERTRAVEL ----- .094 MIN		

REPLACES  
BZ-2AW822T  
DRAWING NUMBER  
B10  
ISSUE  
X12  
REVISIONS  
A COI6736  
G C H  
21 DEC 62  
B CO  
28424  
S R H  
26 JAN 71  
C CO-  
69351-D  
JWB  
18 JUL 91  
D CO-  
70184-6  
G J W  
9 MAR 92  
E CO-  
75204B  
DAW  
1 FEB 94  
CHECK  
S, JAN '63  
DAW  
CHECK  
21 DEC 62  
DRAWN  
FO-50378

# Mouser Electronics

Authorized Distributor

Click to View Pricing, Inventory, Delivery & Lifecycle Information:

[Honeywell:](#)

[BZ-2AW822T](#)