

CATALOG LISTING

12BS218

PAGE 1 OF 1

ISSUE

2

REVISIONS

A C095658

DLT

28 OCT 99

CHECK

18 JUN 98

J A F

CHECK

18 JUN 98

FORMTEK

DRAWN

DLT

18 JUN 98

CATALOG LISTING

12BS218

PAGE 1 OF 1

ISSUE

2

REVISIONS

A C095658

DLT

28 OCT 99

CHECK

18 JUN 98

J A F

CHECK

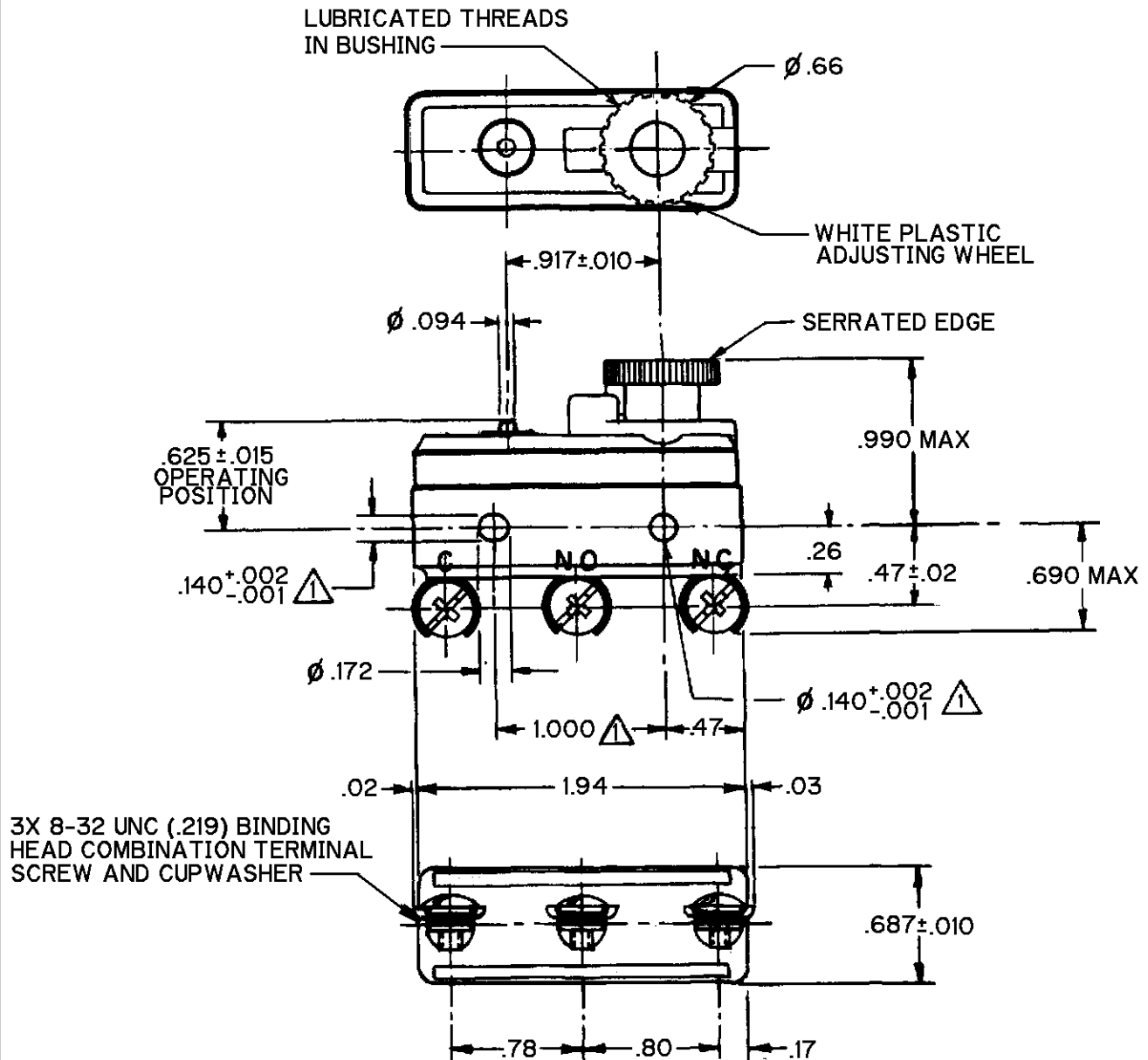
18 JUN 98

FORMTEK

DRAWN

DLT

18 JUN 98

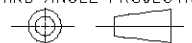


- NOTES
- 1 MOUNTING HOLES WILL ACCEPT PINS OR SCREWS OF $\phi .139$ MAX ON $1.000 \pm .002$ CENTERS
 - 2 - DIAL WHEEL IS SHOWN AT THE MAX SETTING OF BREAK DISTANCE
 - 3 - DIAL WHEEL ROTATION 300°

ANSI Y14.5M-1982 APPLIES

THIS DRAWING COVERS A PROPRIETARY ITEM AND IS THE PROPERTY OF MICRO SWITCH, A DIVISION OF HONEYWELL. THIS DRAWING IS NOT TO BE COPIED OR USED WITHOUT THE APPROVAL OF MICRO SWITCH.

THIRD ANGLE PROJECTION



CHARACTERISTICS

AT MIN SETTING

OPERATING FORCE-----6-10 OZ

RELEASE FORCE-----4 OZ MIN

DIFFERENTIAL TRAVEL-----.0002-.0005

OVERTRAVEL-----.005 MIN

ELECTRICAL DATA

CONTACT ARRANGEMENT

SPDT

UNDERWRITERS' LAB. INC. LISTED RATING

-L111- 15A-125, 250 OR 277 VAC

1/8 HP-125 VAC; 1/4 HP-250 VAC



SCALE

DO NOT
SCALE PRINT

UNLESS OTHERWISE SPECIFIED
TOLERANCES ARE

ONE PLACE (.0) $\pm .030$

TWO PLACE (.00) $\pm .015$

THREE PLACE (.000) $\pm .005$

ANGLES \pm

WEIGHT

Mouser Electronics

Authorized Distributor

Click to View Pricing, Inventory, Delivery & Lifecycle Information:

[Honeywell:](#)

[12BS218](#)