

**MICRO SWITCH**FREEPORT, ILLINOIS, U.S.A.
A DIVISION OF HONEYWELL

FED. MFG. CODE 91929

SWITCH-BASIC

CATALOG LISTING

DT-2RV212-A7**DT-2RV212-A7**DRAWING
NUMBER

10X

17

ISSUE

12

REPLACES

RELEASE NO.

CHECK

CHECK

3

22 JUN 63

L.S.D

22 JUN 63

H

1 FEB 94

L.E.B

21 JUNE 63

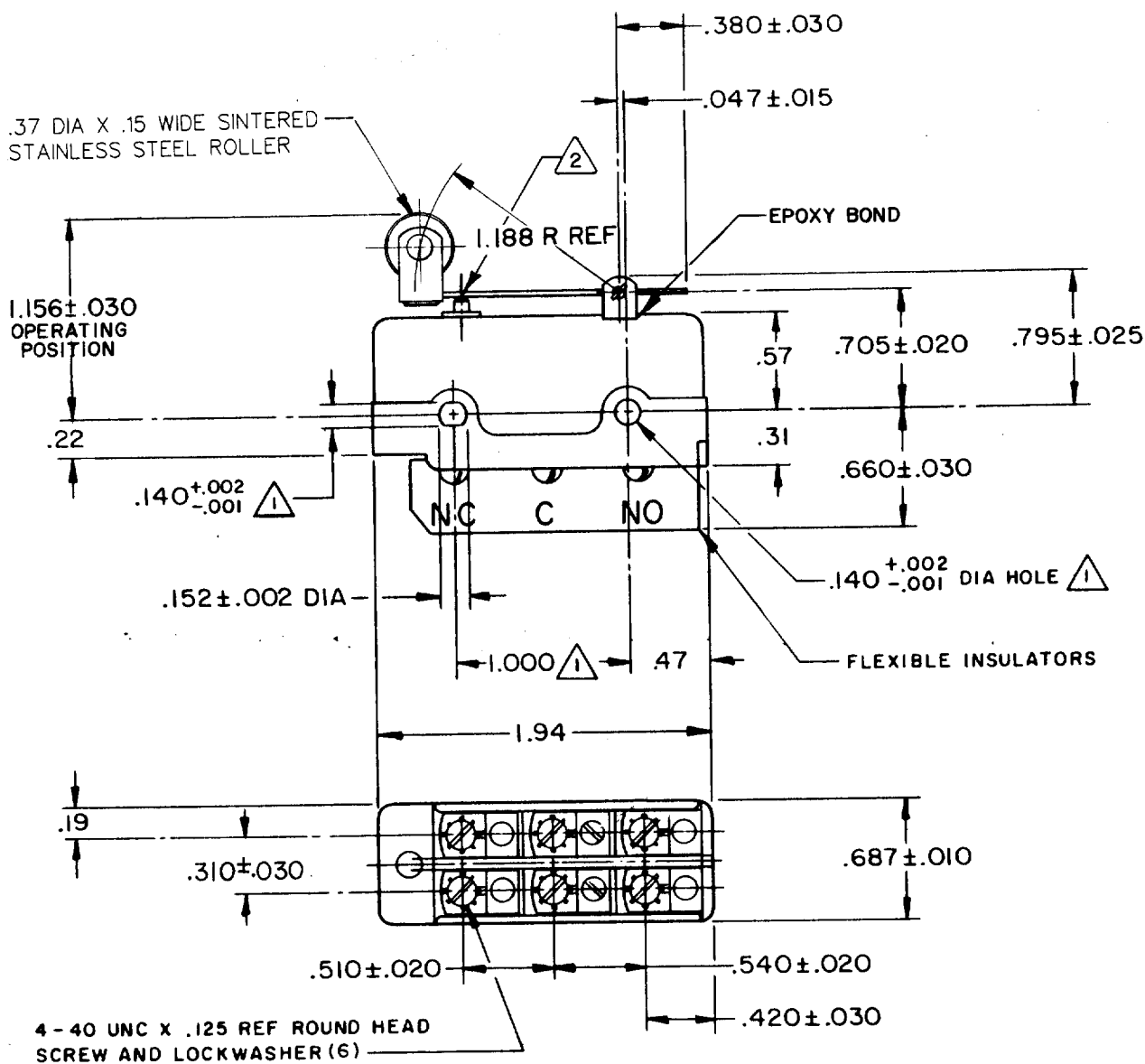
CHECK

L.E.B

21 JUNE 63

DRAWN

FO-50378

**NOTE -**MOUNTING HOLES WILL ACCEPT PINS OR SCREWS
OF .139 MAX DIA ON 1.000 ± .002 CENTERSOVERTRAVEL TO BE MEASURED AT CENTER LINE OF
PLUNGER

THIS DRAWING COVERS A PROPRIETARY ITEM AND IS THE PROPERTY OF MICRO SWITCH, A DIVISION OF MINNEAPOLIS-HONEYWELL REGULATOR CO. THIS DRAWING IS NOT TO BE COPIED OR USED WITHOUT THE APPROVAL OF MICRO SWITCH.

CHARACTERISTICS

OPERATING FORCE ----- 9-15 OZ
RELEASE FORCE ----- 1 1/2 OZ MIN
PRETRAVEL ----- .130 MAX
DIFFERENTIAL TRAVEL ----- .050-.085
OVERTRAVEL ----- (2) .005 MIN

ELECTRICAL DATACONTACT ARRANGEMENT
D P D T

UL LISTED-FILE E12252
CODE L59
10A-125 OR 250 VAC
0.3A-125 VDC; 0.15A-250 VDC

**SCALE FULL**

DO NOT SCALE PRINT

UNLESS OTHERWISE
NOTED

DIMENSIONS ARE IN INCHES

TOLERANCES ARE:

ONE PLACE	(.0)	±.030
TWO PLACE	(.00)	±.015
THREE PLACE	(.000)	±.005
ANGLES		±

WEIGHT .085 LB

Mouser Electronics

Authorized Distributor

Click to View Pricing, Inventory, Delivery & Lifecycle Information:

[Honeywell:](#)

[DT-2RV212-A7](#)