



MICRO SWITCH

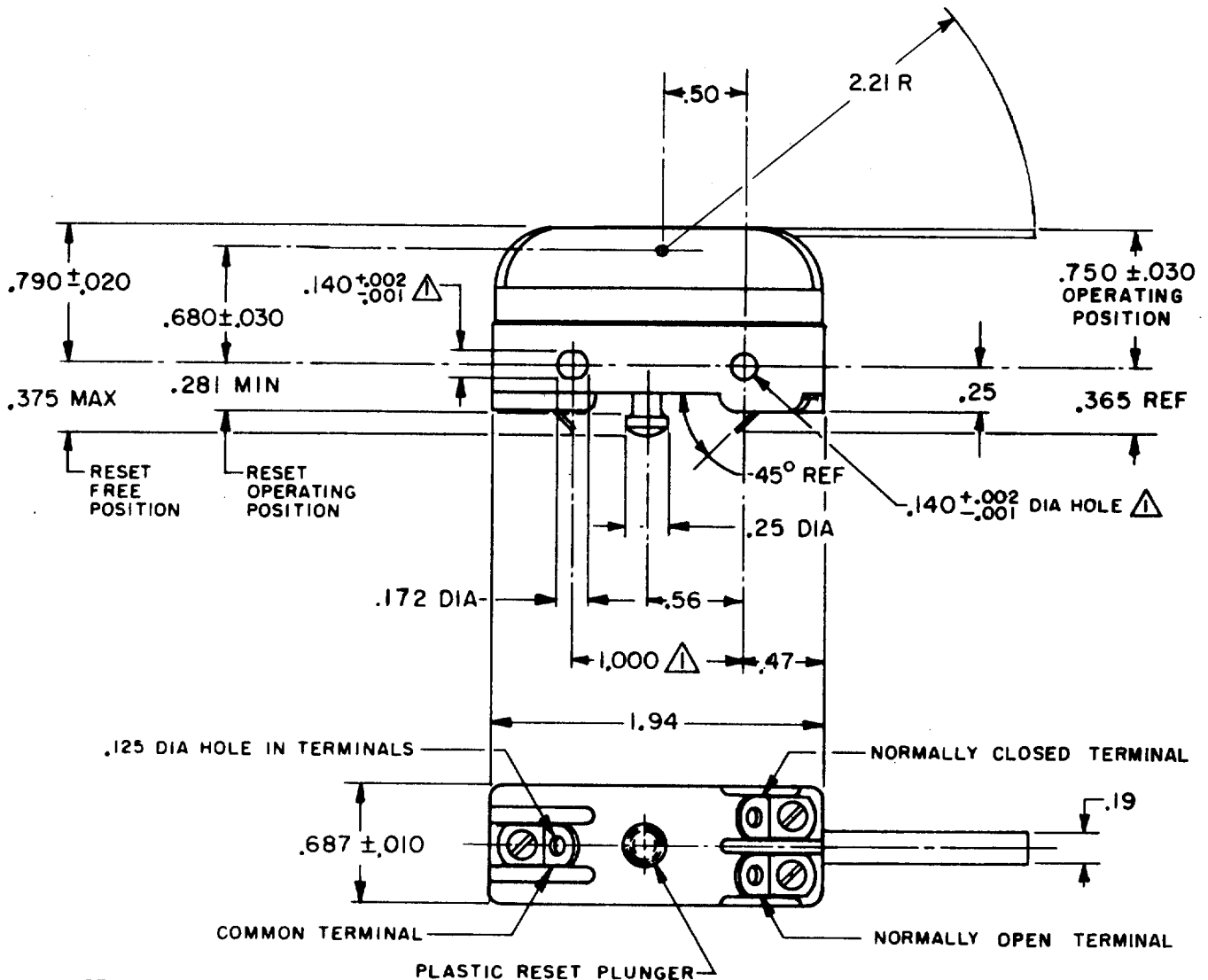
FREEPORT, ILLINOIS, U. S. A.
A DIVISION OF HONEYWELL

FED. MFG. CODE 91929

SWITCH—BASIC

CATALOG LISTING

BZ—RMX



NOTE -

△ - MOUNTING HOLES WILL ACCEPT PINS OR SCREWS
OF .139 MAX DIA ON 1.000 ± .002 CENTERS

THIS DRAWING COVERS A PROPRIETARY ITEM AND IS THE PROPERTY OF MICRO SWITCH, A DIVISION OF MINNEAPOLIS-HONEYWELL REGULATOR CO. THIS DRAWING IS NOT TO BE COPIED OR USED WITHOUT THE APPROVAL OF MICRO SWITCH.

CHARACTERISTICS

OVERTRAVEL — — — — — .156 MIN

RESET CHARACTERISTICS

(WITH LEVER HELD DOWNWARD)

OVERTRAVEL — — — — — .015 MIN

OPERATING FORCE — — — — — 2-10 OZ

ELECTRICAL DATA

CONTACT ARRANGEMENT
SINGLE POLE DOUBLE THROW MAINTAINED CONTACT

UNDERWRITERS' LAB. INC. LISTED RATING
15A - 125, 250 OR 480 VAC
-L67- 1/4HP-125 VAC; 1/2HP-250 VAC
1/2A-125 VDC; 1/4A-250 VDC



SCALE FULL

DO NOT SCALE PRINT

UNLESS OTHERWISE
NOTED

DIMENSIONS ARE IN INCHES

TOLERANCES ARE:

ONE PLACE	(.0)	± .030
TWO PLACE	(.00)	± .015
THREE PLACE	(.000)	± .005
ANGLES		±

WEIGHT

M BZ-RMX

DRAWING
NUMBER

3

2

ISSUE

5

REPLACES

RELEASE NO.

CHECK

REVISIONS

A CO18748

J P H

23 JAN 64

B CO25992

D L F

10 JUN 69

C CO31148

J A W

9 OCT 72

D CO77590

D L T

9 JUN 94

CHECK

CHECK

64

FEB

64

DAW

CHECK

64

JAN

23

J P H

FO-50378-004

DRAWN

Mouser Electronics

Authorized Distributor

Click to View Pricing, Inventory, Delivery & Lifecycle Information:

[Honeywell:](#)

[BZ-RMX](#)