

MICRO SWITCH

FREEPORT ILLINOIS, U.S.A
A DIVISION OF HONEYWELL

FED. MFG. CODE 91929

SWITCH — BASIC

CATALOG LISTING

BZ-2RW80-D5

BZ-2RW80-D5
PAGE 1 OF 1

M

DRAWING
NUMBER

6

ISSUE

REPLACES

PR-2099

RELEASE NO.

CHECK

REVISIONS

A	CO-51576
KAG	28 JUL 82
B	CO-58037
SMA	1 OCT 85
C	CO-77591
DAW	22 JUN 94
D	CO93346
DLT	11 SEP 98
E	CO-94212-C
DLT	17 SEP 99

CHECK

22 SEPT 71

DAW

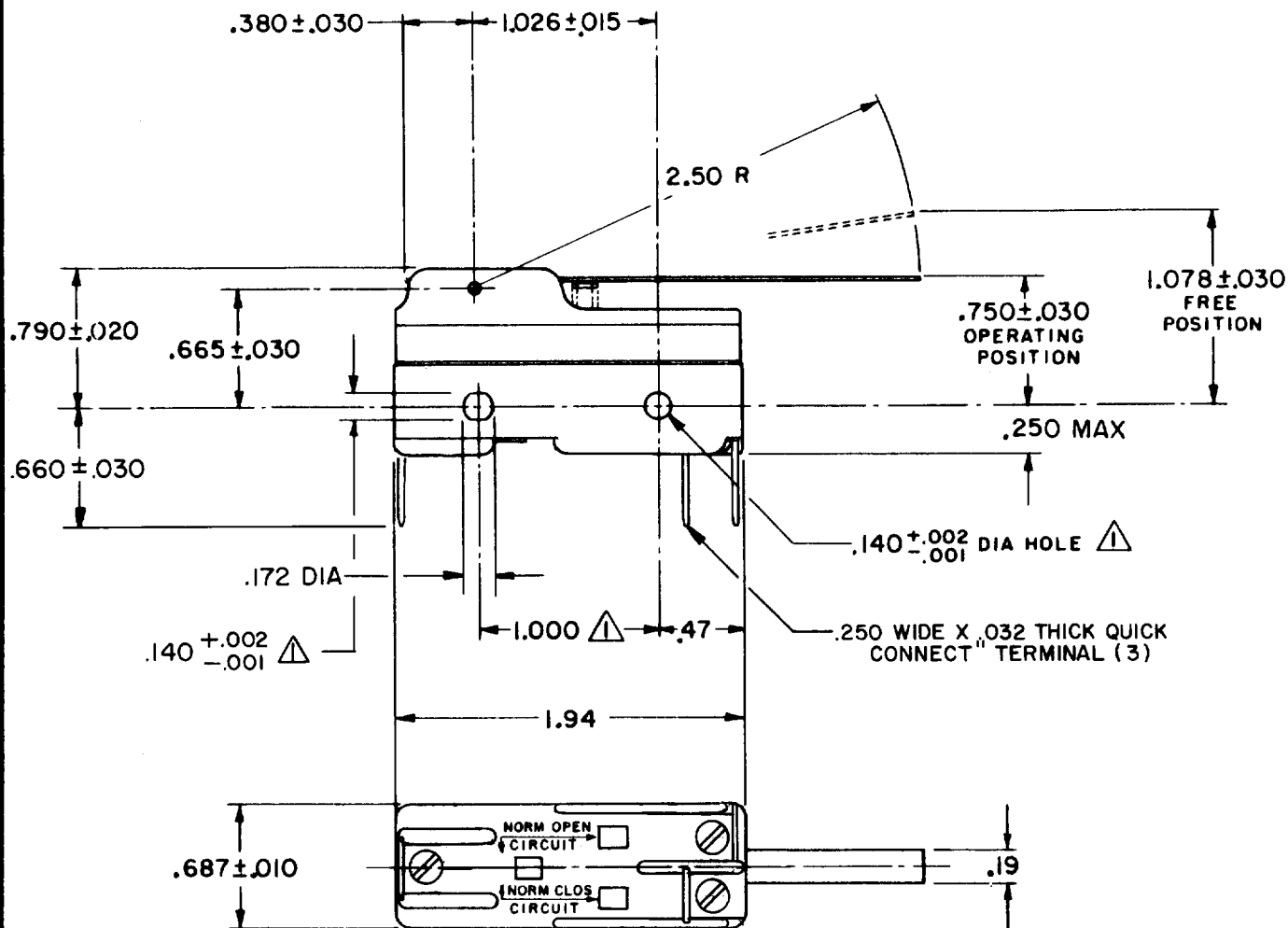
CHECK

71

FORMTEK

FO-80378-1A

DRAWN



NOTE

△ MOUNTING HOLES WILL ACCEPT PINS OR SCREWS OF .139 MAX DIA ON 1.000 ± .002 CENTERS.

THIS DRAWING COVERS A PROPRIETARY ITEM AND IS THE PROPERTY OF MICRO SWITCH, A DIVISION OF HONEYWELL. THIS DRAWING IS NOT TO BE COPIED OR USED WITHOUT THE APPROVAL OF MICRO SWITCH.

CHARACTERISTICS

OPERATING FORCE ----- 2 1/2 OZ MAX
RELEASE FORCE ----- 1/2 OZ MIN
DIFFERENTIAL TRAVEL ----- .007 — .050
OVERTRAVEL ----- .219 MIN

ELECTRICAL DATA

CONTACT ARRANGEMENT
S P D T

UNDERWRITERS' LAB. INC. LISTED RATING
15A-125, 250 OR 480 VAC
-L96- 1/8HP-125 VAC; 1/4HP-250 VAC
1/2A-125 VDC; 1/4A-250 VDC

-L288-
-L299-
-L306-

CE D

16A 250V ~ T85 5E4

SCALE FULL

DO NOT SCALE PRINT

UNLESS OTHERWISE NOTED
DIMENSIONS ARE IN INCHES

TOLERANCES ARE:
ONE PLACE (.0) ± .030
TWO PLACE (.001) ± .015
THREE PLACE (.000) ± .005
ANGLES ±

WEIGHT .060 LB

Mouser Electronics

Authorized Distributor

Click to View Pricing, Inventory, Delivery & Lifecycle Information:

[Honeywell:](#)

[BZ-2RW80-D5](#)