

MICRO SWITCH

FREEPORT ILLINOIS, U.S.A
A DIVISION OF HONEYWELL

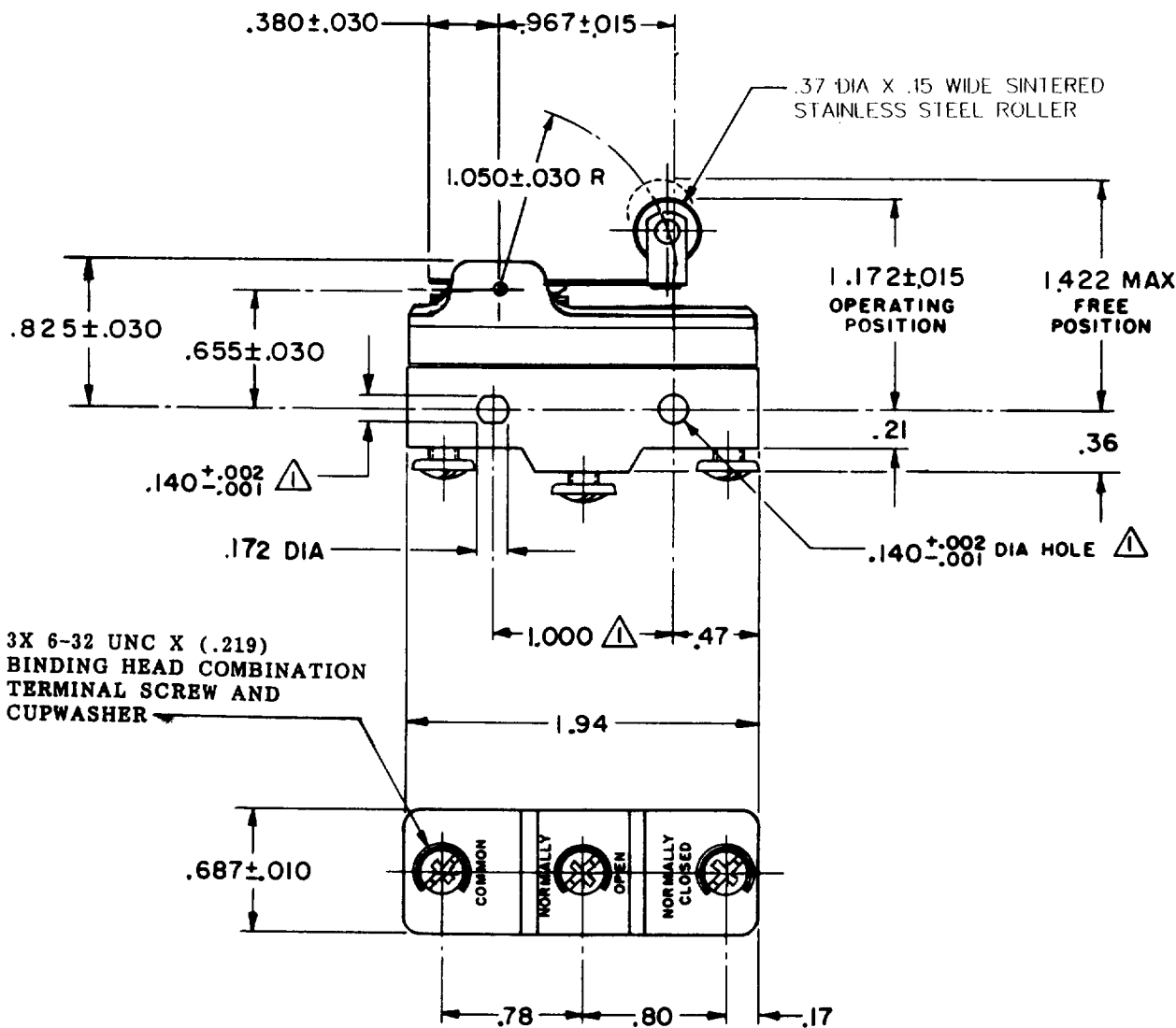
FED. MFG. CODE 91929

SWITCH-BASIC

CATALOG LISTING

BE-2RV22-A2

5



NOTE -
△ - MOUNTING HOLES WILL ACCEPT PINS OR SCREWS
OF .139 MAX DIA ON $1.000 \pm .002$ CENTERS

THIS DRAWING COVERS A PROPRIETARY ITEM AND IS THE PROPERTY OF MICRO SWITCH, A DIVISION OF HONEYWELL. THIS DRAWING IS NOT TO BE COPIED OR USED WITHOUT THE APPROVAL OF MICRO SWITCH.

CHARACTERISTICS

OPERATING FORCE — — — — 6 OZ MAX
RELEASE FORCE — — — — 1 1/2 OZ MIN
PRETRAVEL — — — — .250 MAX
DIFFERENTIAL TRAVEL — — — .045 MAX
OVERTRAVEL — — — — .030 MIN

ELECTRICAL DATA

CONTACT ARRANGEMENT
S P D T

25-A-125, 250, 480 VAC 1 HP-125 VAC;
2 HP-250 OR 480 VAC; PILOT DUTY
750 VA-480 VAC, MAX; 60/75°C (Cu)



SCALE FULL

DO NOT SCALE PRINT

UNLESS OTHERWISE
NOTED

DIMENSIONS ARE IN INCHES

TOLERANCES ARE:

ONE PLACE (.0) $\pm .030$
TWO PLACE (.00) $\pm .015$
THREE PLACE (.000) $\pm .005$
ANGLES \pm

WEIGHT

BE-2RV22-A2

M

DRAWING
NUMBER

2

10

ISSUE

8

REPLACES

PR-678

RELEASE NO.

CHECK

CHECK

CHECK

CHECK

CHECK

CHECK

CHECK

CHECK

CHECK

REVISIONS

A CO30432

R E R

8 MAY 72

B CO

32144

GLM

27 JUL 73

C CO36627

C J H

8 APR 76

D CO

58782

WJM

25 JAN 86

E CO

701848

8 J W

29 APR 92

F CO

73287-J

J J O

22 NOV 93

H CO

752048

DAW

1 FEB 94

J CO

77390

SAD

9 JUN 94

FO-50378-1A

DRAWN

MB S 29 APR 69

Mouser Electronics

Authorized Distributor

Click to View Pricing, Inventory, Delivery & Lifecycle Information:

[Honeywell:](#)

[BE-2RV22-A2](#)