

MICRO SWITCH

FREEPORT ILLINOIS, U.S.A
A DIVISION OF HONEYWELL

FED. MFG. CODE 91929

SWITCH-BASIC

CATALOG LISTING

BE-2RB-A2

CATALOG LISTING
BE-2RB-A2
PAGE 1 OF 1

M

DRAWING
NUMBER

7

ISSUE

REPLACES

PR 474

RELEASE NO.

CHECK

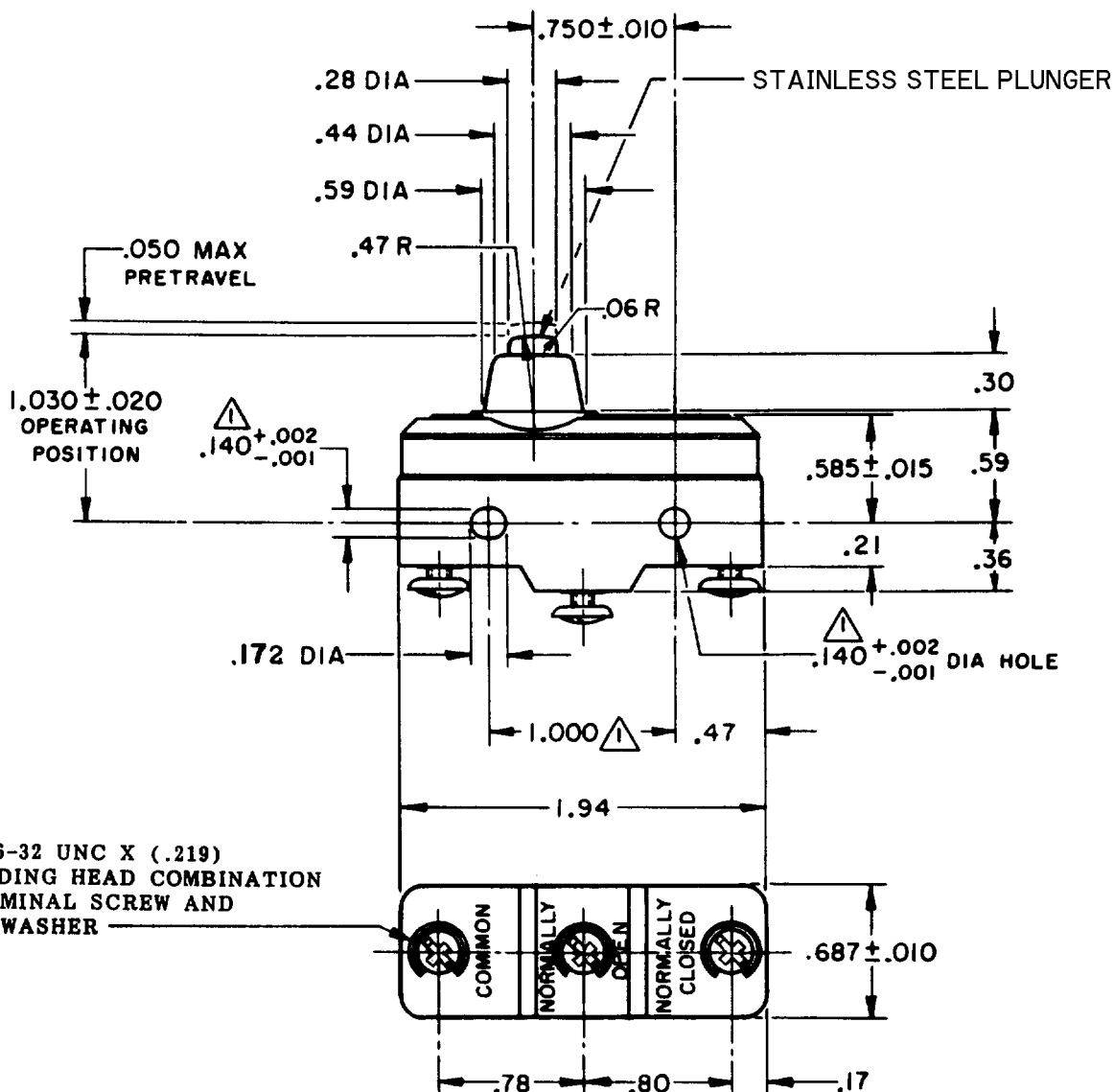
REVISIONS

| | | | |
|---|------------|------|-----------|
| A | CO30432 | RE R | 17 MAY 72 |
| B | CO34480 | | |
| C | CO 58782 | | |
| D | CO 73287-V | | |
| E | CO 77590 | | |
| F | CO 95750-B | | |
| | CSL | | 29 MAR 00 |

3X 6-32 UNC X (.219)
BINDING HEAD COMBINATION
TERMINAL SCREW AND
CUPWASHER

NOTE -

△ MOUNTING HOLES WILL ACCEPT PINS OR SCREWS
OF .139 MAX DIA ON 1.000±.002 CENTERS



THIS DRAWING COVERS A PROPRIETARY ITEM AND IS THE PROPERTY OF MICRO SWITCH, A DIVISION OF HONEYWELL. THIS DRAWING IS NOT TO BE COPIED OR USED WITHOUT THE APPROVAL OF MICRO SWITCH.

CHARACTERISTICS

OPERATING FORCE ----- 14-22 OZ
RELEASE FORCE ----- 10 OZ MIN
DIFFERENTIAL TRAVEL ----- .0020-.0075
OVERTRAVEL ----- .094 MIN

ELECTRICAL DATA

CONTACT ARRANGEMENT
S P D T
25A-125 or 250VAC
1HP-125VAC; 2HP-250VAC
PILOT DUTY 750VA-125, 250, 277VAC
60/75°C (Cu)

SCALE FULL

DO NOT SCALE PRINT

UNLESS OTHERWISE
NOTED

DIMENSIONS ARE IN INCHES

TOLERANCES ARE:

ONE PLACE (.0) ±.030
TWO PLACE (.00) ±.018
THREE PLACE (.000) ±.008
ANGLES ±

WEIGHT .064 LB

FORMTEK

FO-50378-1A

DRAWN

G F S 8 JAN 69 CHECK L S D 11 JAN 69

Mouser Electronics

Authorized Distributor

Click to View Pricing, Inventory, Delivery & Lifecycle Information:

[Honeywell:](#)

[BE-2RB-A2](#)