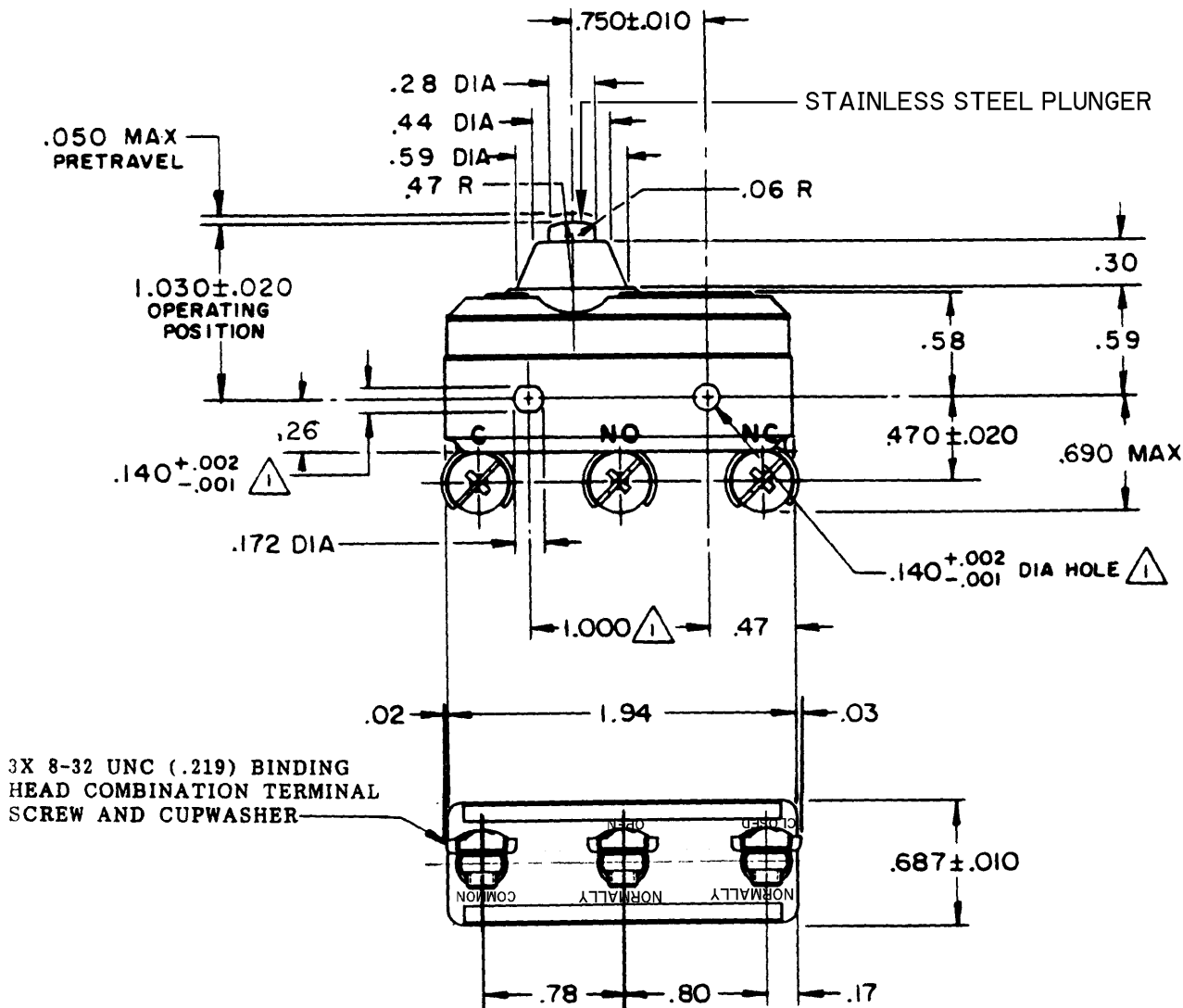


CATALOG LISTING
BA-2RB-P4
PAGE 1 OF 1
M
DRAWING NUMBER
7
ISSUE
REVISIONS
A CO 16851
M B F
21 DEC 64
B CO
73287-G
J A L
20 OCT 93
C CO
75367B
K D R
3 MAR 94
D CO-
77863
G J W
30 APR 96
E CO93346
D L T
24 AUG 98
F CO-
95750-B
C S L
31 MAR 00
FORMTEK
FO-30378
DRAWN
M B F
21 DEC 64
CHECK
L S D
28 DEC 64
CHECK
28 DEC 64
RELEASE NO.
CHECK
REPLACES



NOTE
1 MOUNTING HOLES WILL ACCEPT PINS OR SCREWS
OF .139 MAX DIA ON 1.000 ±.002 CENTERS

THIS DRAWING COVERS A PROPRIETARY ITEM AND IS THE PROPERTY OF MICRO SWITCH, A DIVISION OF HONEYWELL. THIS DRAWING IS NOT TO BE COPIED OR USED WITHOUT THE APPROVAL OF MICRO SWITCH.

CHARACTERISTICS	ELECTRICAL DATA	SCALE FULL
OPERATING FORCE — — — -14 - 22 OZ	CONTACT ARRANGEMENT S P D T	DO NOT SCALE PRINT
RELEASE FORCE — — — - 10 OZ MIN	L23 UNDERWRITERS' LAB. INC. LISTED RATING 20A - 125, 250 OR 480 VAC 10A - 125 VAC "L" 1HP - 125 VAC, 2HP - 250 VAC 1/2A - 125 VDC, 1/4A - 250 VDC	UNLESS OTHERWISE NOTED DIMENSIONS ARE IN INCHES TOLERANCES ARE: ONE PLACE (.0) ±.030 TWO PLACE (.00) ±.015 THREE PLACE (.000) ±.005 ANGLES ±
DIFFERENTIAL TRAVEL — — .0020 - .0075	L288 L299 L308	WEIGHT
OVERTRAVEL — — — - .094 MIN	CE ® ® 20(3)A 250V ~ T85 5E4	

Mouser Electronics

Authorized Distributor

Click to View Pricing, Inventory, Delivery & Lifecycle Information:

[Honeywell:](#)

[BA-2RB-P4](#)