

MICRO SWITCH

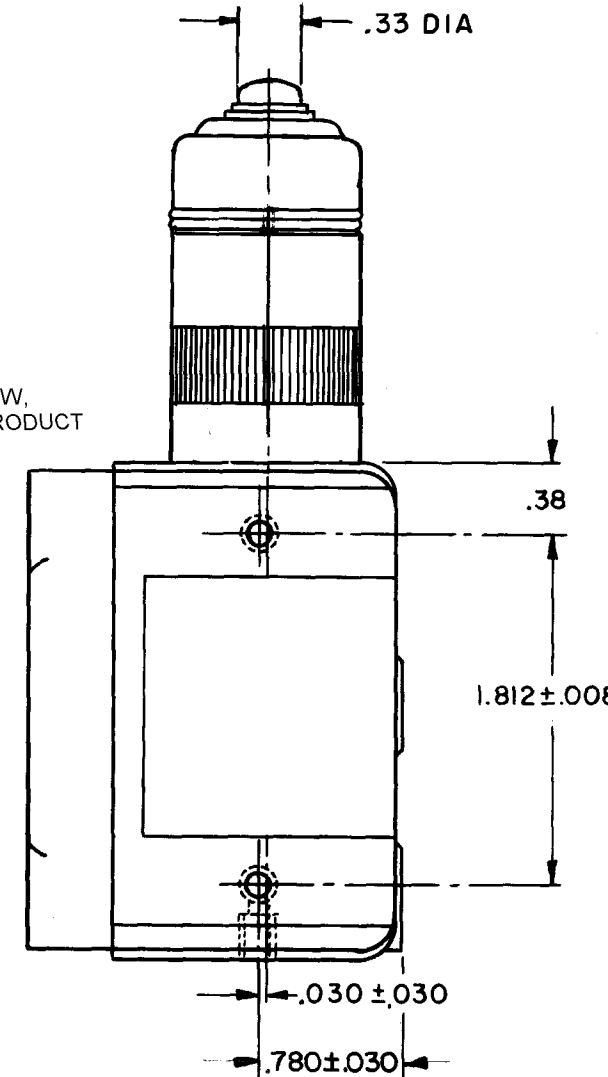
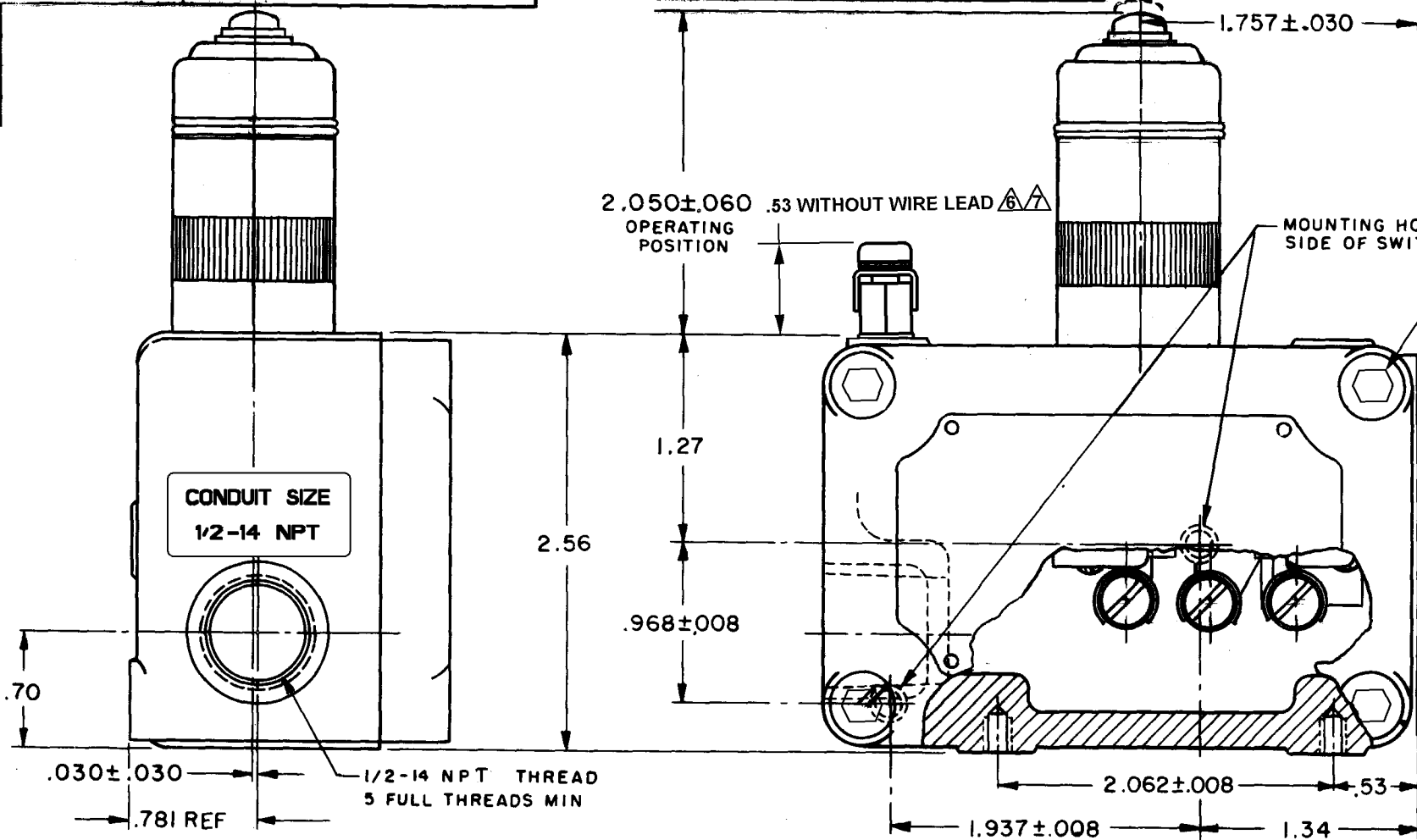
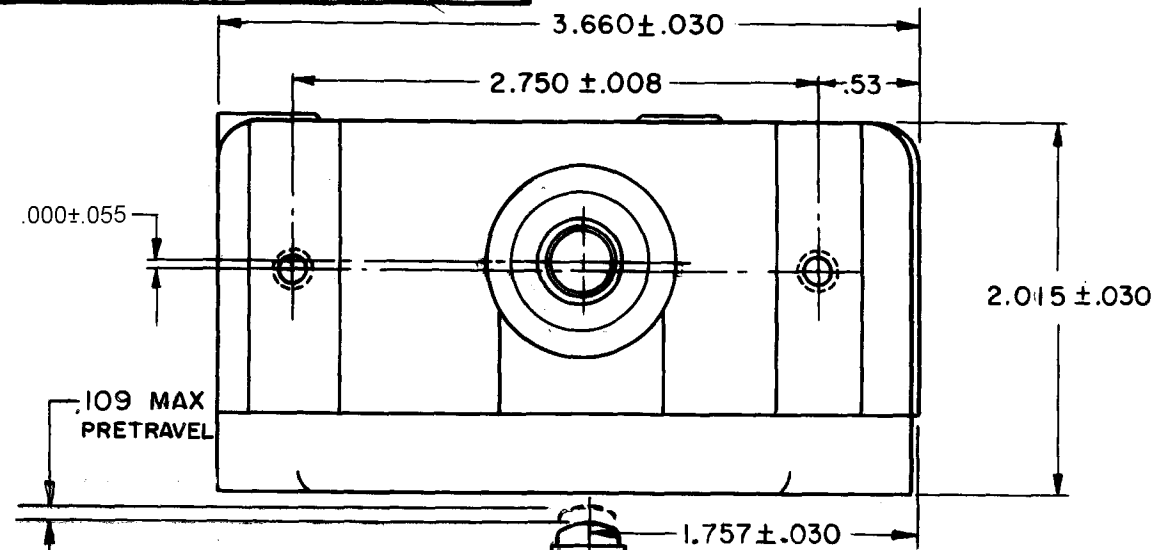
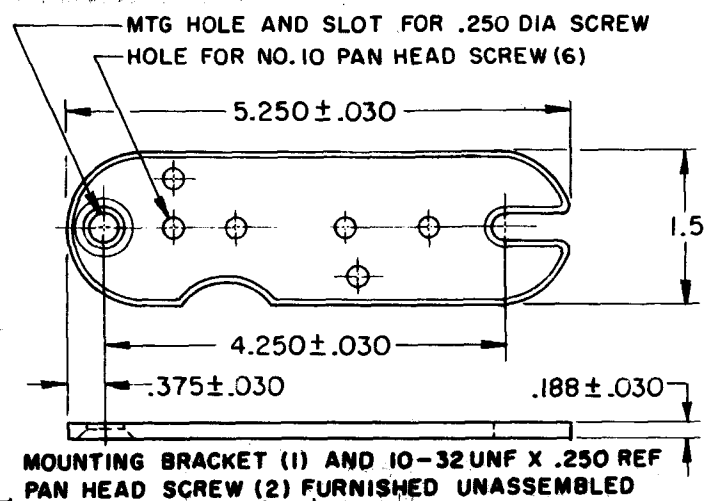
A DIVISION OF MINNEAPOLIS-HONEYWELL REGULATOR COMPANY
FED. MFR. CODE 91929

SWITCH-ENCLOSED

CATALOG LISTING
EXA-N

M

EXA-N
DRAWING NUMBER
13
ISSUE
CMH 03DEC09
CHECK
28APR05
AK
7 NOV 67
LSD
6 NOV 67
MBF 6 NOV 67
FO-50378-003
DRAWN
RASTER



THIS DRAWING COVERS A PROPRIETARY ITEM AND IS THE PROPERTY OF MICRO SWITCH, A DIVISION OF MINNEAPOLIS-HONEYWELL REGULATOR CO. THIS DRAWING IS NOT TO BE COPIED OR USED WITHOUT THE APPROVAL OF MICRO SWITCH.

CHARACTERISTICS	ELECTRICAL DATA	SCALE FULL
OPERATING FORCE — 3 1/2 LB MAX	CONTACT ARRANGEMENT S P D T	DO NOT SCALE PRINT
RELEASE FORCE — 1 LB MIN		UNLESS OTHERWISE SPECIFIED DIMENSIONS ARE IN INCHES
DIFFERENTIAL TRAVEL — .009 MAX	-L23- 20 A-125, 250, OR 480 VAC 10 A-125 VAC "L"	TOLERANCES ARE:
OVERTRAVEL — .125 MIN	1 HP-125 VAC; 2 HP-250 VAC 1/2 A-125 VDC; 1/4 A-250 VDC	ONE PLACE (.0) ± .030 TWO PLACE (.00) ± .015 THREE PLACE (.000) ± .005 ANGLES ±
SWITCH-BASIC REPLACEMENT-BA-2R-P4		WEIGHT

- NOTE -
- EXPLOSION PROOF - UNDERWRITERS' LAB. INC. LISTED FOR HAZARDOUS LOCATIONS NEMA 7, CLASS I, GROUPS C AND D, NEMA 9, CLASS II, GROUPS E, F AND G.
 - MOUNTING SCREW HOLE. 10-32 UNF THREAD X .219 REF DEEP (8)
 - 8-32 UNC X .219 REF TERMINAL SCREW AND CUPWASHER (3)
 - EUROPEAN HAZARDOUS LOCATIONS DESIGNATION: Ex dIIB + H2 T6 CATAGORY II 2 G
 - SEAL RATING: NEMA 1
 - EXTERNAL GROUND SCREW MAY BE ASSEMBLED TO ANY UNUSED MOUNTING SCREW HOLE
 - ASSEMBLE PROVIDED SPLIT LOCKWASHER BETWEEN GROUND LUG AND HOUSING



Mouser Electronics

Authorized Distributor

Click to View Pricing, Inventory, Delivery & Lifecycle Information:

[Honeywell:](#)

[EXA-N](#)