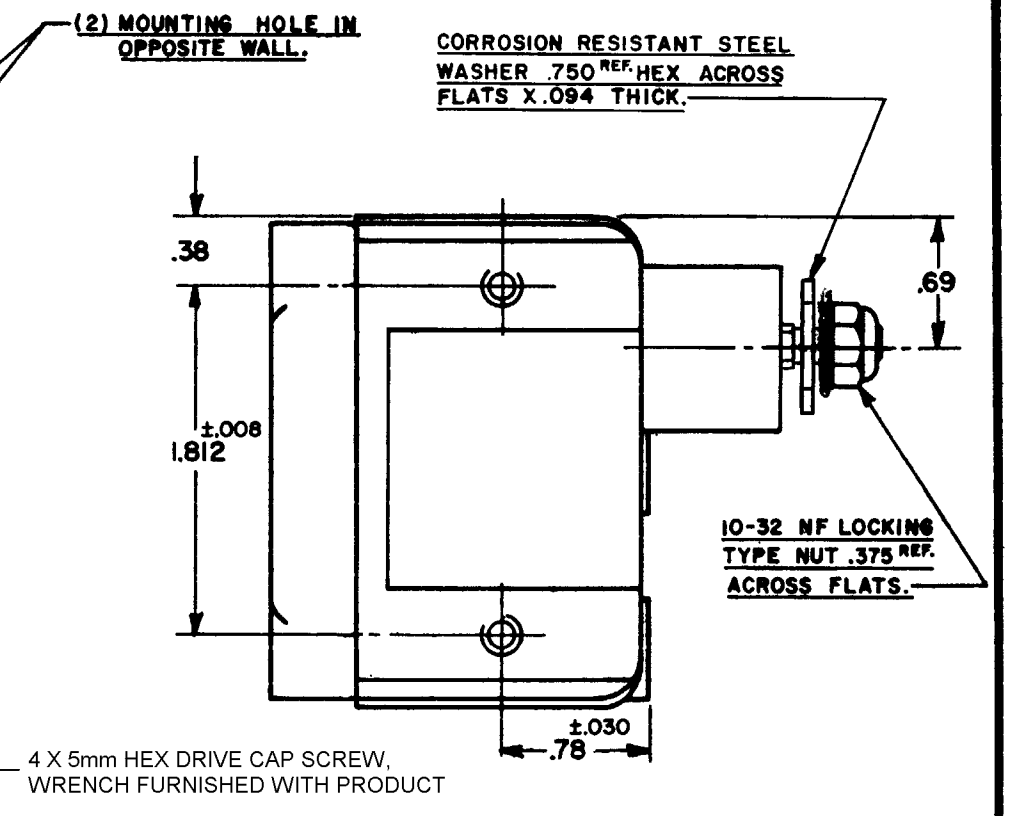
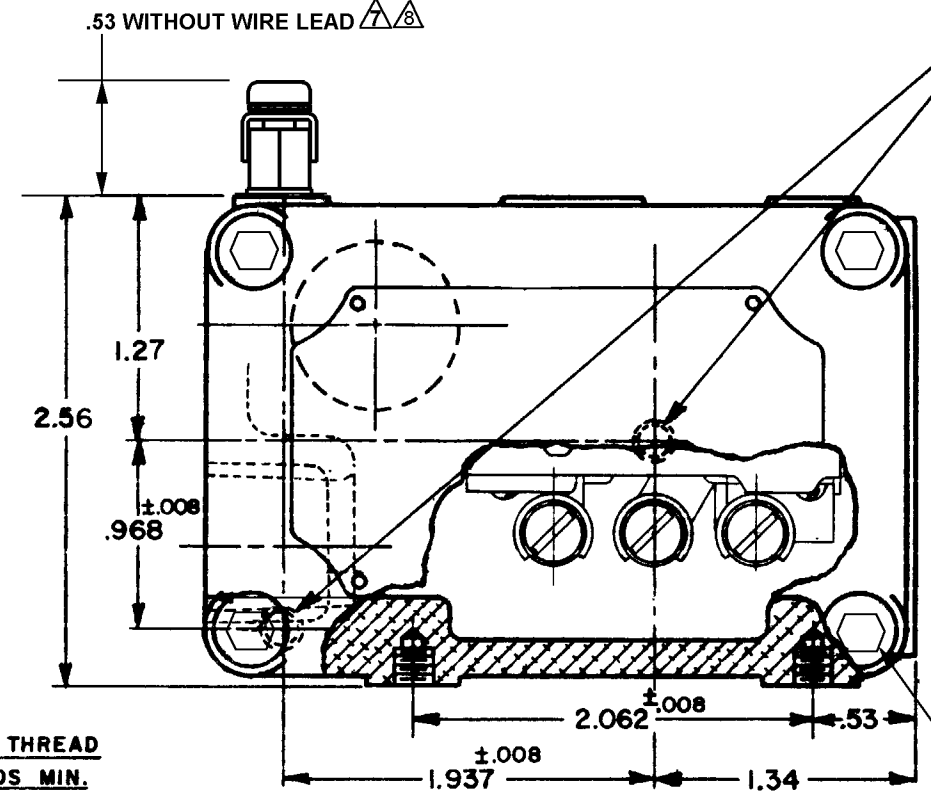
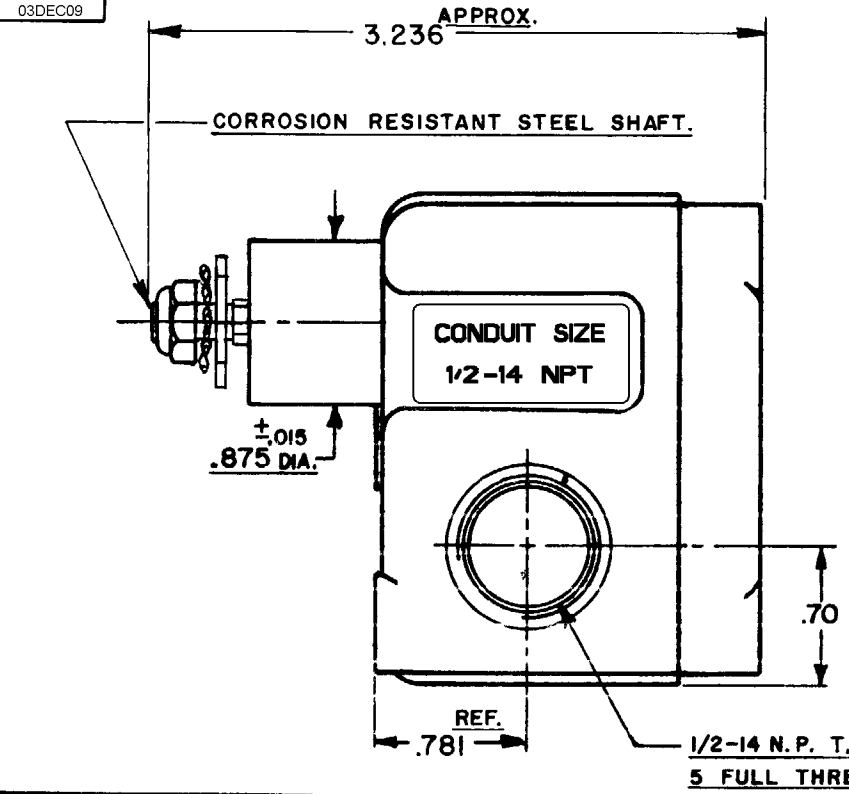
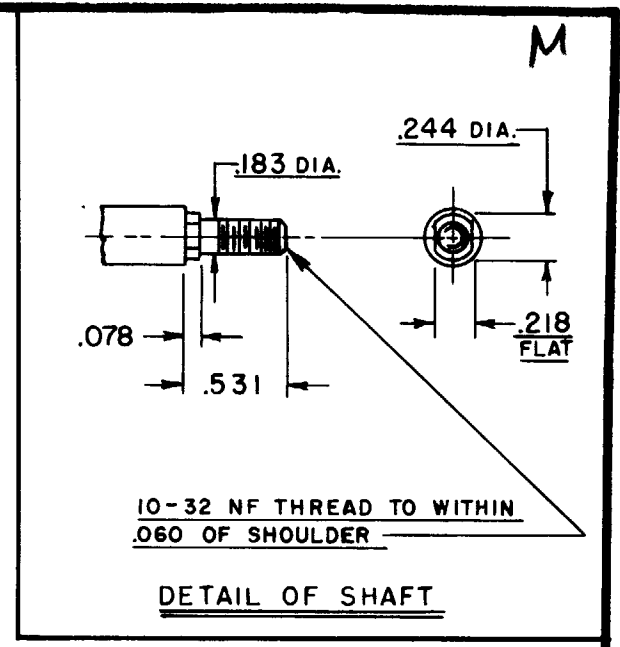
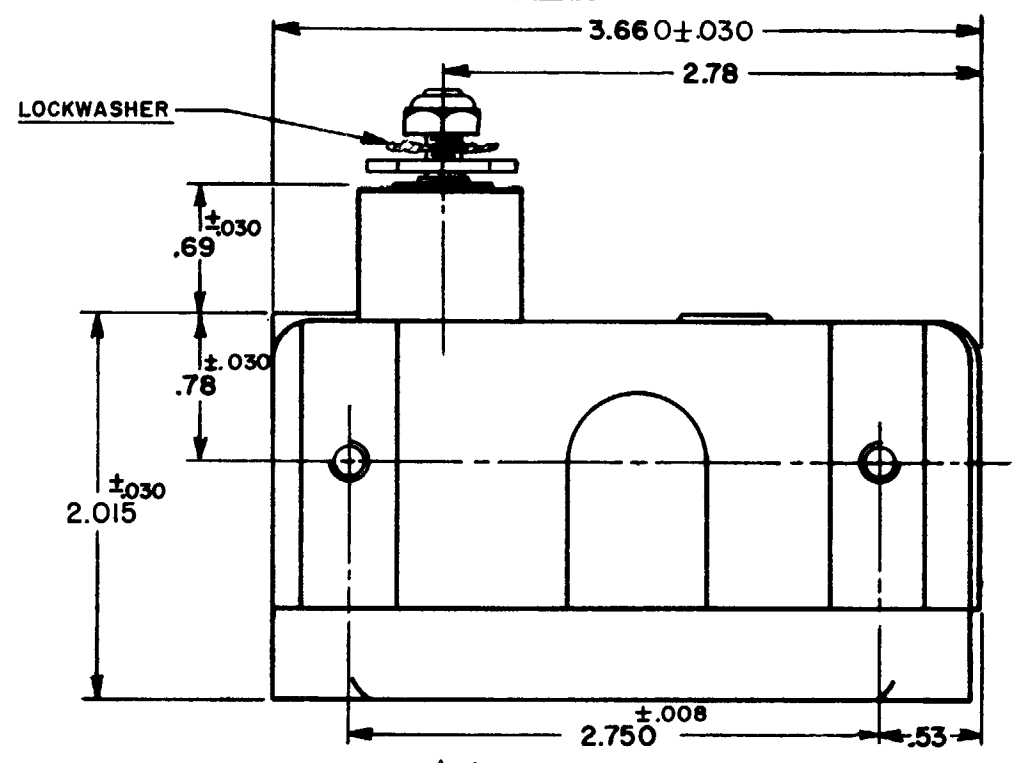
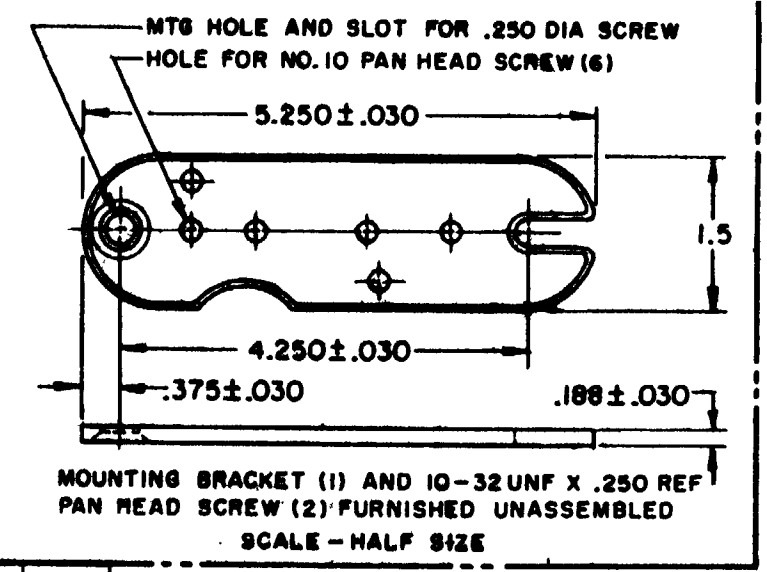


EXA-AR20  
M  
DRAWING NUMBER  
14  
ISSUE  
3  
CMH 03DEC09  
CHECK  
K.L.B. 30, DEC. 87  
DRAWN  
74-98.3  
RASTER

MICRO SWITCH  
A DIVISION OF MINNEAPOLIS HONEYWELL REGULATOR COMPANY  
FED. MFR. CODE 91929

SWITCH-ENCLOSED

CATALOG LISTING  
EXA-AR20



CHARACTERISTICS		ELECTRICAL DATA		SCALE FULL	
		CONTACT ARRANGEMENT		DO NOT SCALE PRINT	
		S.P.D.T.		UNLESS OTHERWISE SPECIFIED	
				DIMENSIONS ARE IN INCHES	
				TOLERANCES ARE:	
PRETRAVEL ----- 8° MAX.		20 A-125, 250 OR 480 VAC		ONE PLACE (.0)	± .030
		10 A-125 VAC "L"		TWO PLACE (.00)	± .018
OVERTRAVEL ----- DO NOT OVERTRAVEL MORE THAN 25°		1 HP-125 VAC, 2 HP-250 VAC		THREE PLACE (.000)	± .008
		1/2 A-125 VDC, 1/4 A-250 VDC		ANGLES	±
SWITCH BASIC REPLACEMENT--BA-2R-P4				WEIGHT	

- NOTE-
- 1-(8) MOUNTING SCREW HOLE, 10-32 NF-2B THREADS X .219 REF. DEEP.
  - 2-8-32 NC X .219 REF. TERMINAL SCREWS AND CUP WASHERS.
  - 3-EXPLOSION PROOF-UNDERWRITERS LAB. INC. LISTED FOR HAZARDOUS LOCATIONS NEMA 7, CLASS I, GROUPS C AND D, NEMA 9, CLASS II, GROUPS E, F AND G.
  - 4-SWITCH OPERATES ON RIGHT HAND CLOCKWISE ROTATION.
  - 5-EUROPEAN HAZARDOUS LOCATIONS DESIGNATION: Ex dIIB + H2 T6 CATAGORY II 2 G
  - 6-SEAL RATING: NEMA 1
  - △ EXTERNAL GROUND SCREW MAY BE ASSEMBLED TO ANY UNUSED MOUNTING SCREW HOLE
  - △ ASSEMBLE PROVIDED SPLIT LOCKWASHER BETWEEN GROUND LUG AND HOUSING

THIS DRAWING COVERS A PROPRIETARY ITEM AND IS THE PROPERTY OF MICRO SWITCH, A DIVISION OF HONEYWELL. THIS DRAWING IS NOT TO BE COPIED OR USED WITHOUT THE APPROVAL OF MICRO SWITCH.

# Mouser Electronics

Authorized Distributor

Click to View Pricing, Inventory, Delivery & Lifecycle Information:

[Honeywell:](#)

[EXA-AR20](#)