

# MICRO SWITCH

A DIVISION OF MINNEAPOLIS-HONEYWELL REGULATOR COMPANY  
PREPONT, ILLINOIS  
FED. MFR. CODE 91929

## ACTUATOR-SWITCH

CATALOG LISTING

JS-49

JS-49

M

DRAWING  
NUMBER

2

X

ISSUE

3

(M) SKETCH 16058

REPLACES ISSUE 1

RELEASE NO. S.R. 6568

CHECK

REVISIONS

A CO12901

MBF

18 MAY 59

B CO17304

MBF

4 DEC 63

CNT

25 MAY 59

6CH

28 MAY 59

CHECK

24 MAY 57

CHECK

24 MAY 57

CHECK

24 MAY 57

CHECK

24 MAY 57

CHECK

24 MAY 57

CHECK

24 MAY 57

CHECK

24 MAY 57

CHECK

24 MAY 57

CHECK

24 MAY 57

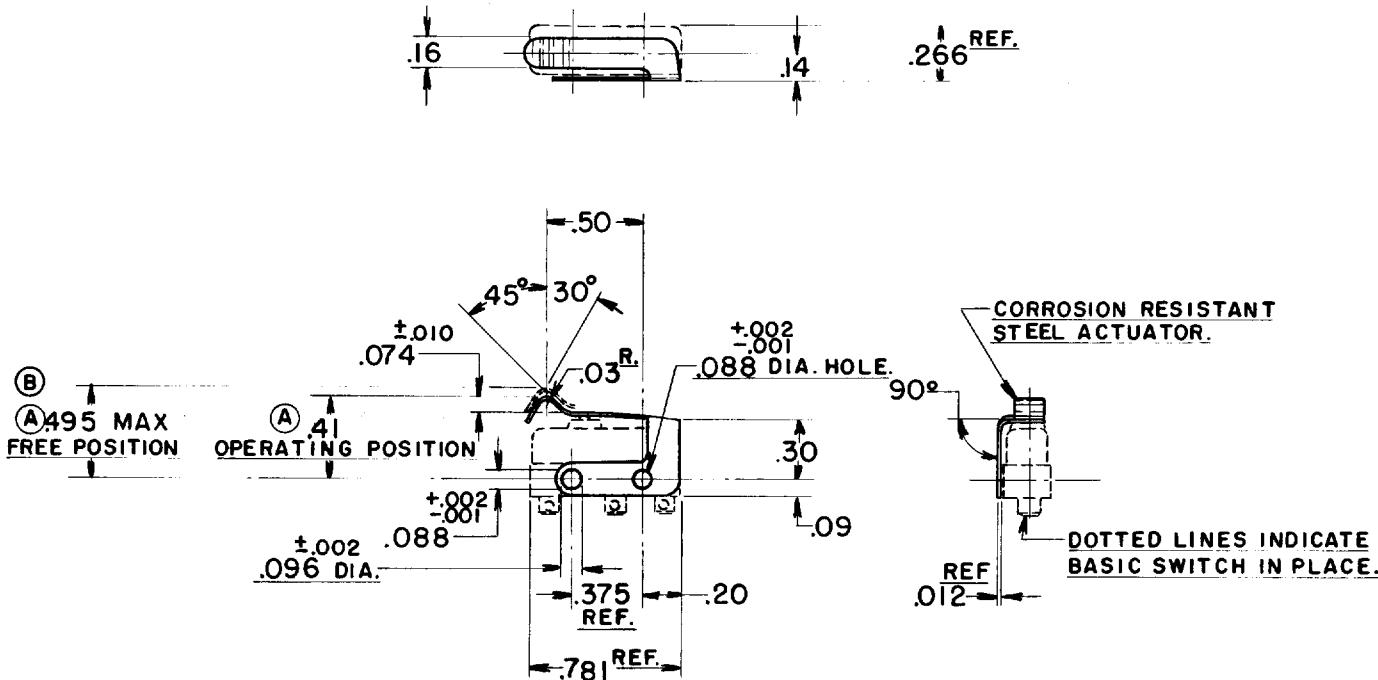
CHECK

24 MAY 57

CHECK

(B) A495 MAX  
FREE POSITION

(A) 41  
OPERATING POSITION



CORROSION RESISTANT  
STEEL ACTUATOR.

DOTTED LINES INDICATE  
BASIC SWITCH IN PLACE.

THIS DRAWING COVERS A PROPRIETARY ITEM AND IS THE PROPERTY OF MICRO SWITCH, A DIVISION OF HONEYWELL. THIS DRAWING IS NOT TO BE COPIED OR USED WITHOUT THE APPROVAL OF MICRO SWITCH.

### CHARACTERISTICS WITH ISMI BASIC SWITCH INSTALLED

OPERATING FORCE-----18 OZ MAX  
RELEASE FORCE-----2 OZ MIN  
PRETRAVEL-----.125 MAX  
DIFFERENTIAL TRAVEL-----.015 MAX  
OVERTRAVEL-----.015 MIN

(A)

### ELECTRICAL DATA

CONTACT ARRANGEMENT

### SCALE FULL

DO NOT SCALE PRINT

UNLESS OTHERWISE  
SPECIFIED

DIMENSIONS ARE IN INCHES

TOLERANCES ARE:

ONE PLACE (.0) ±.030  
TWO PLACE (.00) ±.015  
THREE PLACE (.000) ±.005  
ANGLES ± 2°

WEIGHT

# Mouser Electronics

Authorized Distributor

Click to View Pricing, Inventory, Delivery & Lifecycle Information:

[Honeywell:](#)

[JS-49](#)