

MICRO SWITCH

A DIVISION OF MINNEAPOLIS-HONEYWELL REGULATOR COMPANY
FREEPORT, ILLINOIS

FED. MFR. CODE 91929

ACTUATOR-SWITCH

CATALOG LISTING

JS-21

(M) JS-21
ISSUE 3

REPLACES

RELEASE NO.

CHECK 10 FEB 56

CHECK 10 FEB 56

CHECK 10 FEB 56

CHECK 10 FEB 56

CHECK 10 FEB 56

CHECK 10 FEB 56

CHECK 10 FEB 56

CHECK 10 FEB 56

CHECK 10 FEB 56

CHECK 10 FEB 56

CHECK 10 FEB 56

CHECK 10 FEB 56

CHECK 10 FEB 56

CHECK 10 FEB 56

JS-21

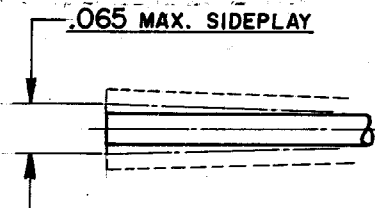
M

DRAWING
NUMBER

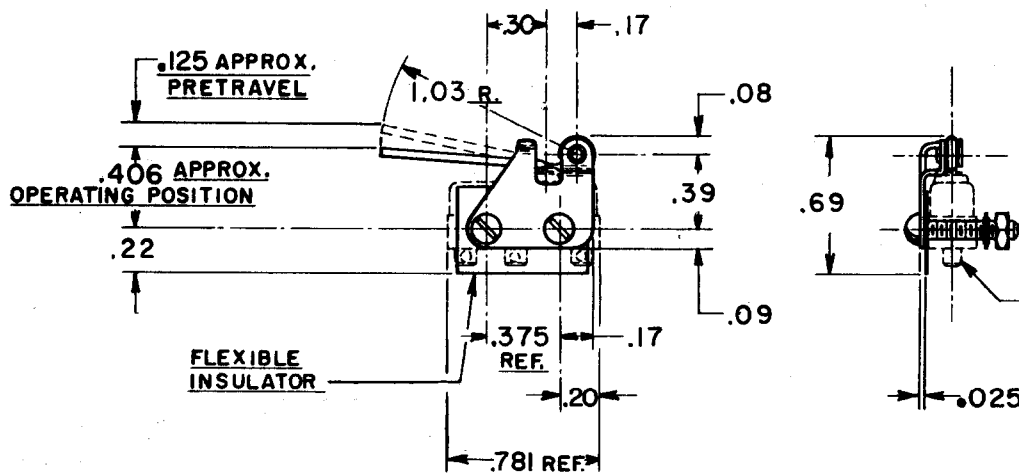
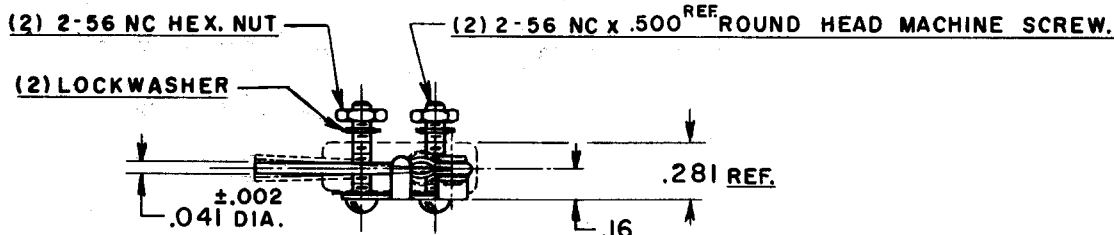
ISSUE
B 7

REVISIONS

A	CO 9600	K.F.M.	2 FEB 56
B	CO 11211	D. A. W.	5 FEB 57
C	CO 47771	C.J.H.	17 MAY 80
D	CO 79303	DLT	7 MAR 95



DETAIL OF LEVER



NOTE -

1- SCREWS, NUTS, LOCKWASHERS, AND INSULATOR FURNISHED UNASSEMBLED.

THIS DRAWING COVERS A PROPRIETARY ITEM AND IS THE PROPERTY OF MICRO SWITCH, A DIVISION OF HONEYWELL. THIS DRAWING IS NOT TO BE COPIED OR USED WITHOUT THE APPROVAL OF MICRO SWITCH.

CHARACTERISTICS WITH 13M1 SWITCH INSTALLED

OPERATING FORCE — — — — 1 OZ. MAX.
RELEASE FORCE — — — — 4 GRAMS MIN.
DIFFERENTIAL TRAVEL — — — — .031 MAX.
OVERTRAVEL — — — — .030 MIN.

ELECTRICAL DATA

CONTACT ARRANGEMENT BREAK DISTANCE

SCALE FULL

DO NOT SCALE PRINT

UNLESS OTHERWISE SPECIFIED
DIMENSIONS ARE IN INCHES
TOLERANCES ARE:
ONE PLACE (.0) ±.030
TWO PLACE (.00) ±.015
THREE PLACE (.000) ±.005
ANGLES ±

WEIGHT

DRAWN

K.F.M. 2 FEB 56

74-26

Mouser Electronics

Authorized Distributor

Click to View Pricing, Inventory, Delivery & Lifecycle Information:

[Honeywell:](#)

[JS-21](#)