

MICRO SWITCH

A DIVISION OF MINNEAPOLIS-HONEYWELL REGULATOR COMPANY

MINNEAPOLIS, MINN.

FED. MFR. CODE 91929

SWITCH - BASIC

CATALOG LISTING

BZ-2RW82212-A2

MBZ-2RW82212-A2

PAGE 1 OF 1

DRAWING
NUMBER

8

ISSUE

REPLACES

RELEASE NO.

CHECK

REVISIONS

A	CO	16736
	GCH	5 APRIL 62
B	CO	34308
	GLH	8 JUL 75
C	CO	73287-E
	DHD	5 OCT 93
D	CO	77589
	MAM	29 MAR 94
E	CO	93346
	DLT	17 SEP 98

CHECK

17 APR 62

DAW

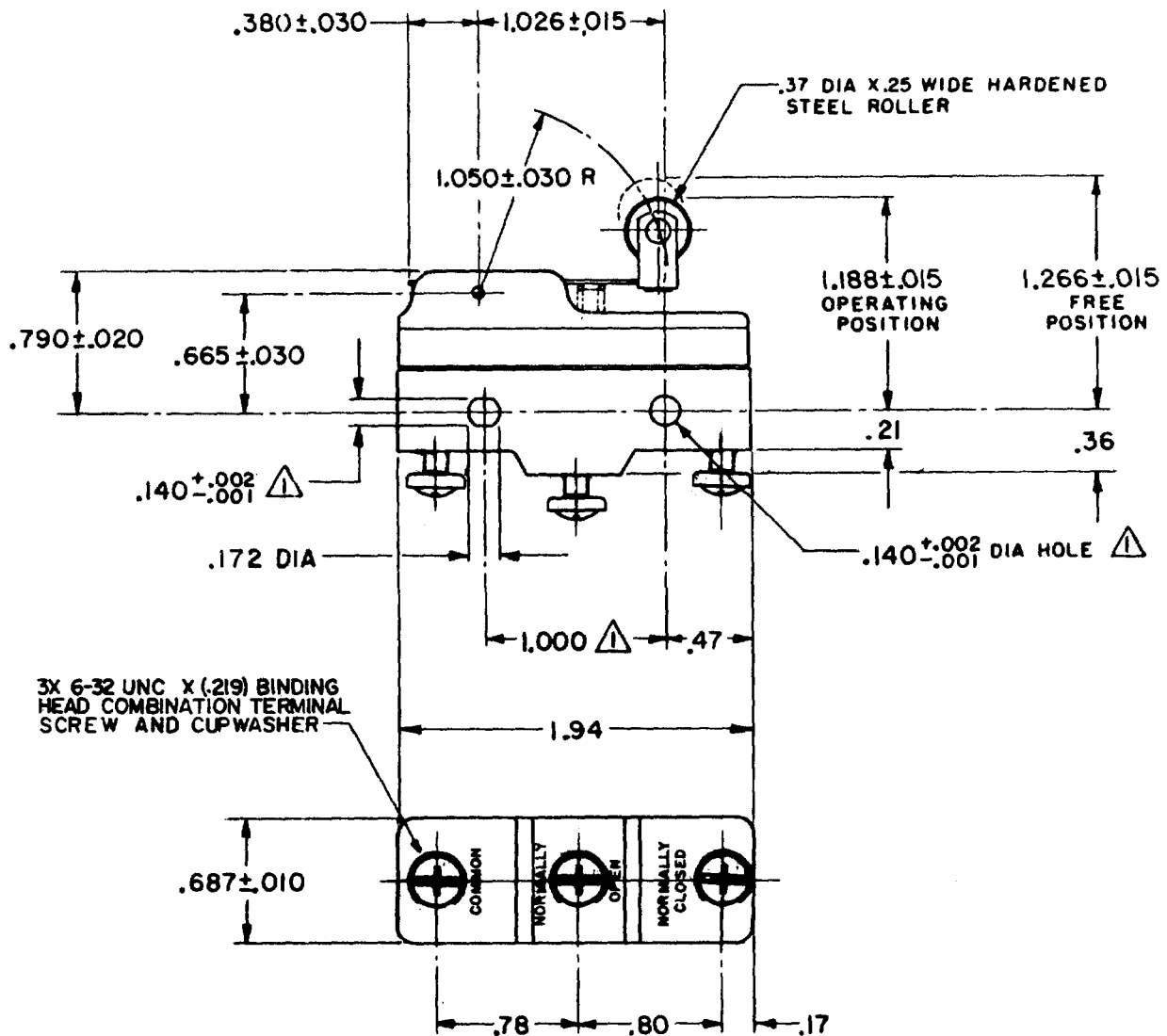
CHECK

5 APRIL 62

GCH

FORMTEK

FO-50378



THIS DRAWING COVERS A PROPRIETARY ITEM AND IS THE PROPERTY OF MICRO SWITCH, A DIVISION OF MINNEAPOLIS-HONEYWELL REGULATOR CO. THIS DRAWING IS NOT TO BE COPIED OR USED WITHOUT THE APPROVAL OF MICRO SWITCH.

CHARACTERISTICS

OPERATING FORCE ----- 6 OZ MAX

RELEASE FORCE ----- 1 1/2 OZ MIN

DIFFERENTIAL TRAVEL ----- .003 - .020

OVERTRAVEL ----- .094 MIN

ELECTRICAL DATA

CONTACT ARRANGEMENT
S P D T

UNDERWRITERS' LAB. INC. LISTED RATINGS
-L96- 15A-125, 250, OR 480 VAC
1/2 A-125 VDC; 1/4 A-250 VDC
1/8 HP-125 VAC; 1/4 HP-250 VAC

-L288-
-L299-
-L306-



16A 250V ~ T85 5E4

SCALE FULL

DO NOT SCALE PRINT

UNLESS OTHERWISE
SPECIFIED

DIMENSIONS ARE IN INCHES

TOLERANCES ARE:

ONE PLACE (.0) $\pm .030$
TWO PLACE (.00) $\pm .015$
THREE PLACE (.000) $\pm .005$
ANGLES \pm

WEIGHT .076 LB

Mouser Electronics

Authorized Distributor

Click to View Pricing, Inventory, Delivery & Lifecycle Information:

[Honeywell:](#)

[BZ-2RW82212-A2](#)