

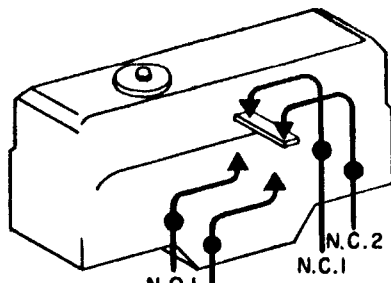
MICRO SWITCH

A DIVISION OF MINNEAPOLIS-HONEYWELL REGULATOR COMPANY
PRINCETON, ILLINOIS

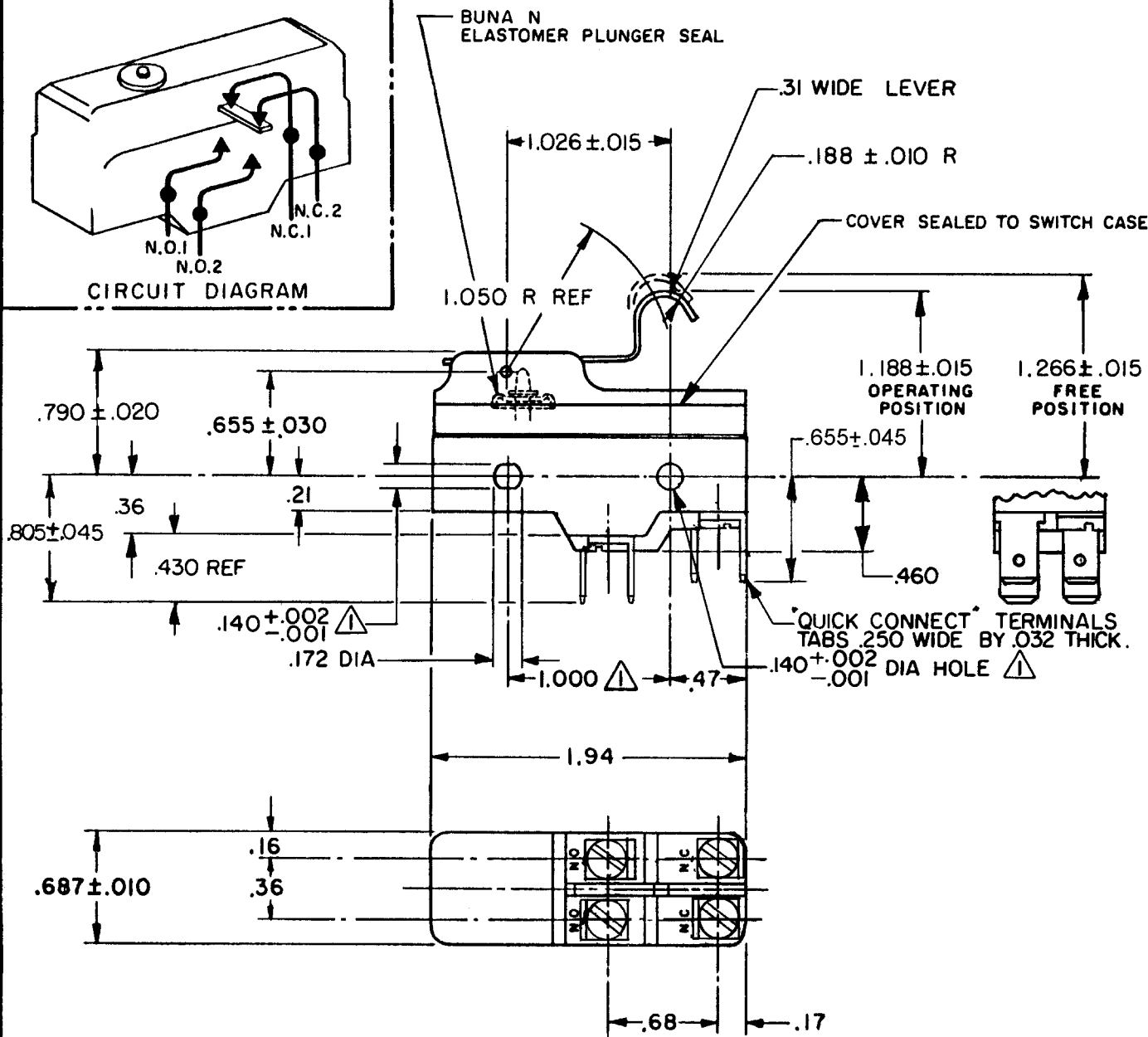
FED. MFR. CODE 91929

SWITCH - BASIC

CATALOG LISTING
BZ-2AW855-D6



CIRCUIT DIAGRAM



NOTE -



MOUNTING HOLES WILL ACCEPT PINS OR SCREWS OF .139 MAX DIA ON 1.000 ± .002 CENTERS.

2 - SUITABLE ONLY FOR APPLICATIONS IMPARTING A RAPID STROKE TO THE SWITCH PLUNGER

3 - SEALED CONSTRUCTION PROVIDES SPLASH RESISTANCE

THIS DRAWING COVERS A PROPRIETARY ITEM AND IS THE PROPERTY OF MICRO SWITCH, A DIVISION OF MINNEAPOLIS-HONEYWELL REGULATOR CO. THIS DRAWING IS NOT TO BE COPIED OR USED WITHOUT THE APPROVAL OF MICRO SWITCH.

CHARACTERISTICS

OPERATING FORCE - - - - - 8 1/2 OZ MAX

RELEASE FORCE - - - - - 1 1/2 OZ MIN

DIFFERENTIAL TRAVEL - - - - .008 - .030

OVERTRAVEL - - - - - .094 MIN

ELECTRICAL DATA

CONTACT ARRANGEMENT
SEE CIRCUIT DIAGRAM

L73

15A 125, 250 OR 480 VAC

1A 125 VDC, 0.5A 250 VDC

1/4 HP 125 VAC, 1/2 HP 250 VAC



SCALE FULL

DO NOT SCALE PRINT

UNLESS OTHERWISE SPECIFIED
DIMENSIONS ARE IN INCHES

TOLERANCES ARE:

ONE PLACE	(.0)	±.030
TWO PLACE	(.00)	±.015
THREE PLACE	(.000)	±.005
ANGLES		±

WEIGHT

CATALOG LISTING
BZ-2AW855-D6
PAGE 1 OF 1

M

ISSUE
4

REVISIONS

A	067209	JAP	2 MAY 90
B	80938	CO	12 JUN 95
C	203596	CSL	27 JUL 01

RASTER

FO-50378

DRAWN

TLB

22 JAN. 88

CHECK DCS

28 JAN 88

CHECK

CHECK

RELEASE NO. PR-16155

REPLACES

Mouser Electronics

Authorized Distributor

Click to View Pricing, Inventory, Delivery & Lifecycle Information:

[Honeywell:](#)

[BZ-2AW855-D6](#)