

HONEYWELL  
PART NUMBER

BM-2RW82255512429-A4

AEQ7576

WHEN SEARCHING FOR THIS CATALOG LISTING WITHIN HONEYWELL'S INTERNAL SAP SYSTEM, THE LISTING MUST BE ENTERED WITHOUT DASHES (BM2RW82255512429A4) DUE TO CHARACTER LIMITATIONS IMPOSED BY THE SYSTEM.

REV

DOCUMENT

CHANGED BY

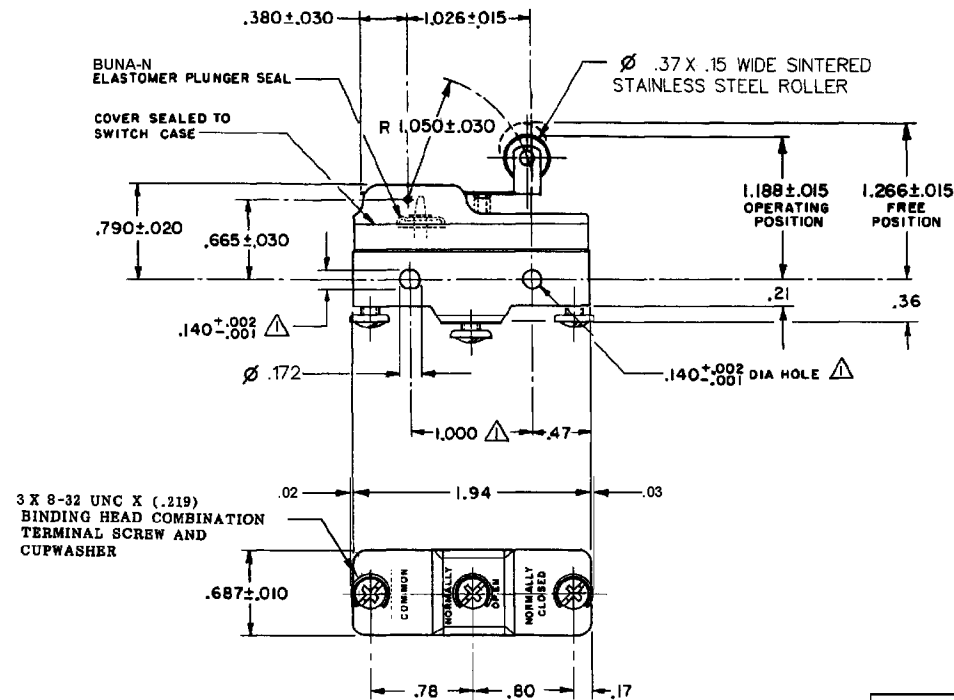
CHECK

C

0046794

MBH 09DEC08

RS



## NOTES

- 1 MOUNTING HOLES WILL ACCEPT PINS OR SCREWS OF  $\phi .139$  MAX ON  $1.000 \pm .002$  CENTERS
- 2 - SEALED CONSTRUCTION PROVIDES SPLASH RESISTANCE
- 3 - CONTACT MATERIAL: SILVER TIN OXIDE ALLOY
- 4 - SWITCH WILL WITHSTAND TEMPERATURE OF  $250^\circ \text{F}$

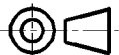
REPLACES: X115994-BM

CHARACTERISTICS	ELECTRICAL DATA
OPERATING FORCE ----- 10 OZ MAX	CONTACT ARRANGEMENT SPDT
RELEASE FORCE ----- 1 1/2 OZ MIN	L288 L315 L318
DIFFERENTIAL TRAVEL ----- .003 - .025	L167
OVERTRAVEL ----- .094 MIN	22A 125, 250 OR 277 VAC 3/4HP 125 VAC, 1 1/2HP 250 VAC 22A 250V ~ T85 5E4

DESIGN UNITS: INCH  
TOLERANCES UNLESS NOTED:

NO PLACE	X	$\pm$	0.040
ONE PLACE	.X	$\pm$	0.030
TWO PLACE	.XX	$\pm$	0.015
THREE PLACE	.XXX	$\pm$	0.005
FOUR PLACE	.XXXX	$\pm$	0.0005
ANGLES		$\pm$	$2^\circ$

THIRD ANGLE PROJECTION



DRAWN	AS	25JAN05
CHECK	AK	25JAN05

THIS DRAWING COVERS A PROPRIETARY ITEM AND IS THE PROPERTY OF HONEYWELL. THIS DRAWING IS NOT TO BE COPIED OR USED WITHOUT THE PERMISSION OF HONEYWELL.

INTERPRET PER ASME Y14.5M-1994  
OTHER HONEYWELL ENGINEERING STANDARDS MAY APPLY

RASTER

Honeywell

TITLE

SWITCH-BASIC

SIZE	TYPE	DRAWING NAME	REV
A	I	BM-2RW82255512429-A4	C
SCALE	NONE	SHEET	1 OF 1

# Mouser Electronics

Authorized Distributor

Click to View Pricing, Inventory, Delivery & Lifecycle Information:

[Honeywell:](#)

[BM-2RW82255512429-A4](#)