

# MICRO SWITCH

FREEPORT ILLINOIS, U.S.A  
A DIVISION OF HONEYWELL  
FED. MFG. CODE 91929

## SWITCH - BASIC

CATALOG LISTING

BM-1RD33-A2

BM-1RD33-A2

M

DRAWING  
NUMBER

X

X

4

ISSUE

REPLACES

RELEASE NO. PR-4779

CHECK

ASD

CHECK

75

4 FEB 75

D/JW

CHECK

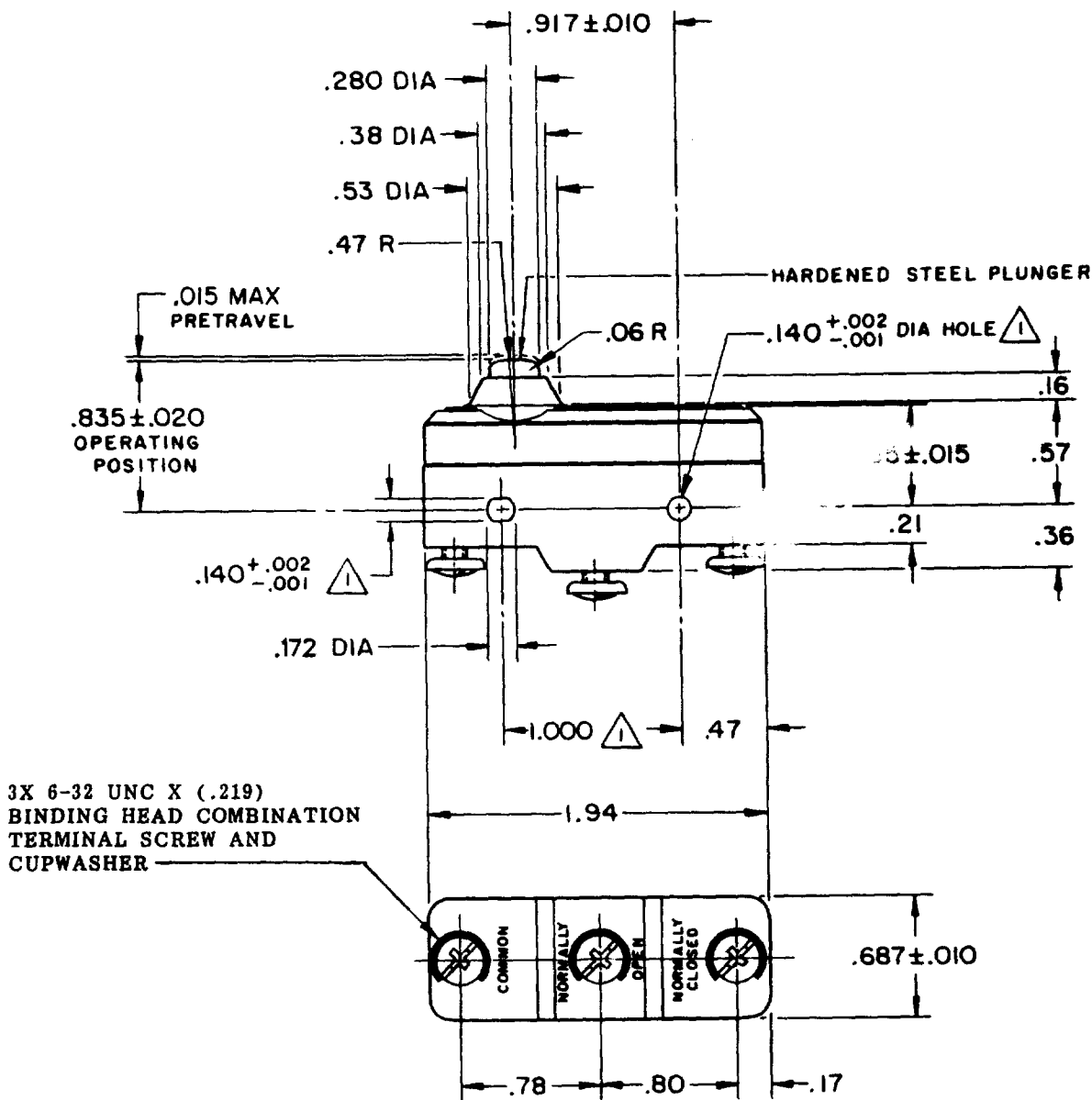
75

FEB 75

R E R 13

### REVISIONS

A	CO-73287-J	JAL	22 NOV 93
B	CO-77589	KDR	29 MAR 94
C	0035412	BS	03DEC07



3X 6-32 UNC X (.219)  
BINDING HEAD COMBINATION  
TERMINAL SCREW AND  
CUPWASHER

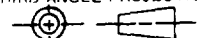
### NOTE -



MOUNTING HOLES WILL ACCEPT PINS OR SCREWS  
OF .139 MAX DIA ON 1.000 ± .002 CENTERS

THIS DRAWING COVERS A PROPRIETARY ITEM AND IS THE PROPERTY OF MICRO SWITCH, A DIVISION OF HONEYWELL. THIS DRAWING IS NOT TO BE COPIED OR USED WITHOUT THE APPROVAL OF MICRO SWITCH.

THIRD ANGLE PROJECTION



### CHARACTERISTICS

OPERATING FORCE - - - - - 7-10 OZ  
RELEASE FORCE - - - - - 4 OZ MIN  
DIFFERENTIAL TRAVEL - - .0005-.0010  
OVERTRAVEL - - - - - .060 MIN

### ELECTRICAL DATA

CONTACT ARRANGEMENT  
S P D T

CODE L102 22A-125 250 OR 480 VAC  
1/4HP-125 VAC; 1/2HP-250 VAC

L288  
L315  
L318



22A 250V ~ T85 5E4

### SCALE FULL

DO NOT SCALE PRINT

### TOLERANCES

APPLY TO DESIGN UNITS. CONVERSIONS ARE ONLY FOR  
REFERENCE. UNLESS NOTED, TOLERANCES ARE ±

	DIM. mm	TOL. mm/in	DIM. in	TOL. mm/in
NO PLACES	X	1/.04	X	0.001
ONE PLACE	X.X	0.4/.016	X.X	0.004
TWO PLACES	X.XX	0.15/.006	X.XX	0.0015
THREE PLACES	X.XXX		X.XXX	0.0005
ANGLES				

DESIGN UNITS

SI METRIC

US CUSTOMARY

WEIGHT .064 LB

# Mouser Electronics

Authorized Distributor

Click to View Pricing, Inventory, Delivery & Lifecycle Information:

[Honeywell:](#)

[BM-1RD33-A2](#)