

FREEPORT ILLINOIS, U.S.A
A DIVISION OF HONEYWELL
FED. MFG. CODE 91929

SWITCH - BASIC

CATALOG LISTING

BA-2RV191-A2

BA-2RV191-A2

PAGE 1 OF 1

RELEASE NO. PR-6208

DRAWING
NUMBER

2

ISSUE

SECRET

CHECK

97-76

203

834

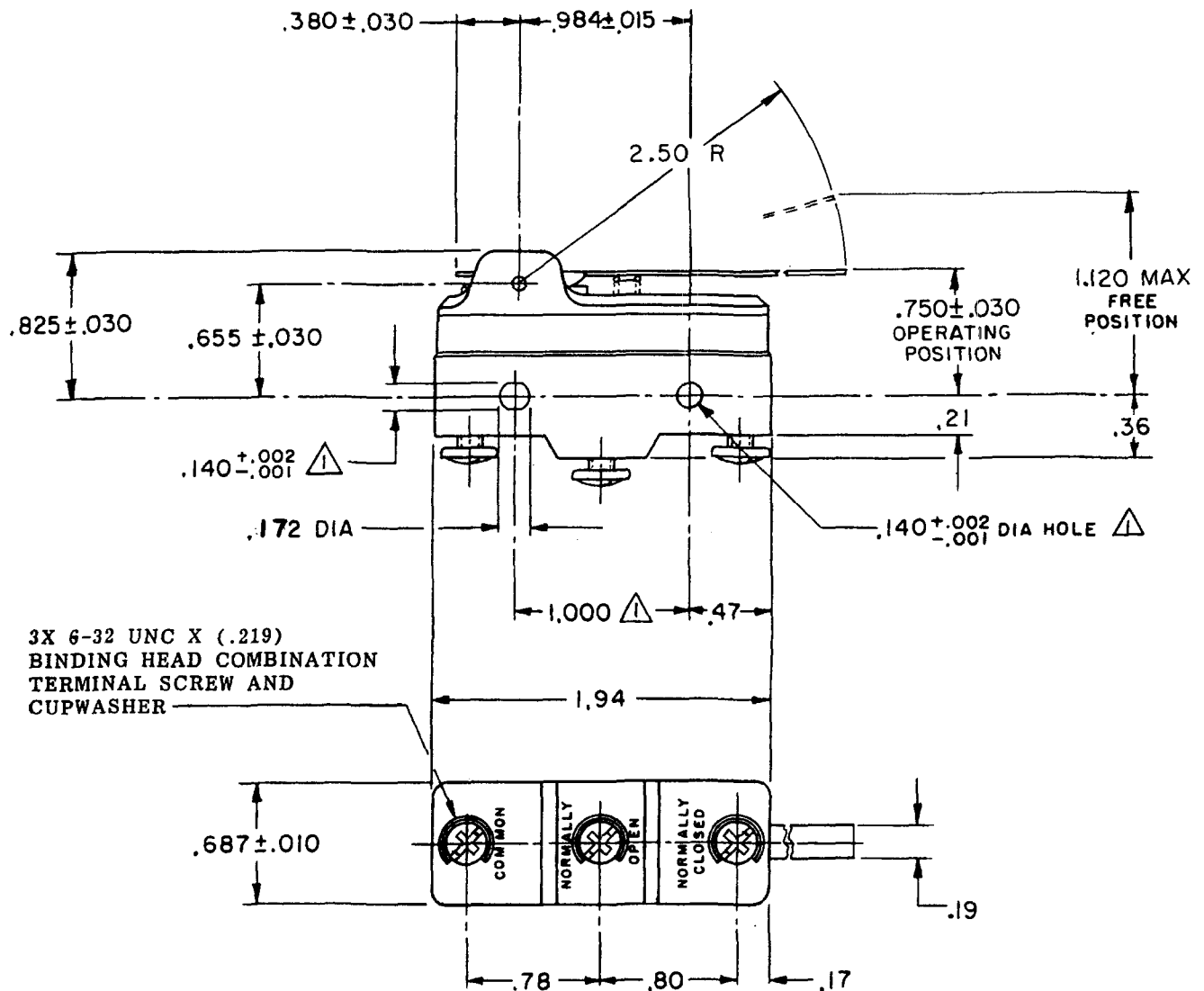
CHECK

NOV 7

R	24
---	----

FORMTEK

FO-52848-A

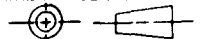


NOTE -

① - MOUNTING HOLES WILL ACCEPT PINS OR SCREWS
OF .139 MAX DIA ON $1.000 \pm .002$ CENTERS

THIS DRAWING COVERS A PROPRIETARY ITEM AND IS THE PROPERTY OF MICRO SWITCH, A DIVISION OF HONEYWELL. THIS DRAWING IS NOT TO BE COPIED OR USED WITHOUT THE APPROVAL OF MICRO SWITCH.

THIRD ANGLE PROJECTION



CHARACTERISTICS

OPERATING FORCE----- 10 OZ MAX

RELEASE FORCE — — — — 3 1/4 OZ MIN

PRETRAVEL- - - - - .400 MAX

DIFFERENTIAL TRAVEL- - -.070 MAX

OVERTRAVEL- - - - - .050 MIN

ELECTRICAL DATA

CONTACT ARRANGEMENT
S P O T

UL LISTED - FILE E12252
20A-125, 250 OR 480 VAC; 10A-125 VAC "L"
1HP-125 VAC; 2HP-250 VAC
CODE L23 1/2A-125 VDC; 1/4A-250 VDC

L288
L299
L308



20(3)A 250V \sim T85 5E4

SCALE FULL

DO NOT SCALE PRINT

TOLERANCES

APPLY TO DESIGN UNITS. CONVERSIONS ARE ONLY FOR REFERENCE, UNLESS NOTED. TOLERANCES ARE \pm

	DIM. mm	TOL. mm/in	DIM. in	TOL. mm/in
NO PLACES	x	1/04		
ONE PLACE	x,x	0.4/016	x,x	0.8/03
TWO PLACES	x,x,x	0.15/006	x,x,x	0.38/015
THREE PLACES			x,x,x,x	0.13/005

DESIGN UNITS ☐

WEIGHT .065 LB

Mouser Electronics

Authorized Distributor

Click to View Pricing, Inventory, Delivery & Lifecycle Information:

[Honeywell:](#)

[BA-2RV191-A2](#)