

**MICRO SWITCH**FREEPORT, ILLINOIS, U.S.A.  
A DIVISION OF HONEYWELL

FED. MFG. CODE 91829

**SWITCH-BASIC**

CATALOG LISTING

**BA-1RV111-A2****ABN1150****BA-1RV111-A2**

PAGE 1 OF 1

**M**DRAWING  
NUMBER

7

ISSUE

REPLACES

RELEASE NO. SR 11020

17 FEB 06

RJ

CHECK

## REVISIONS

A CO 18321

M B F

19 NOV 63

B CO 18384

M B W

21 JUL 64

C CO -

73287-J

J A L

22 NOV 83

D CO

77590

S A D

8 JUN 94

E CO93346

D L T

27 AUG 98

F 0018388

TGP

17 FEB 06

CHECK

15 MAY 63

15 MAY 63

BRJ

CHECK

15 MAY 63

CHECK

15 MAY 63

DAW

CHECK

14 MAY 63

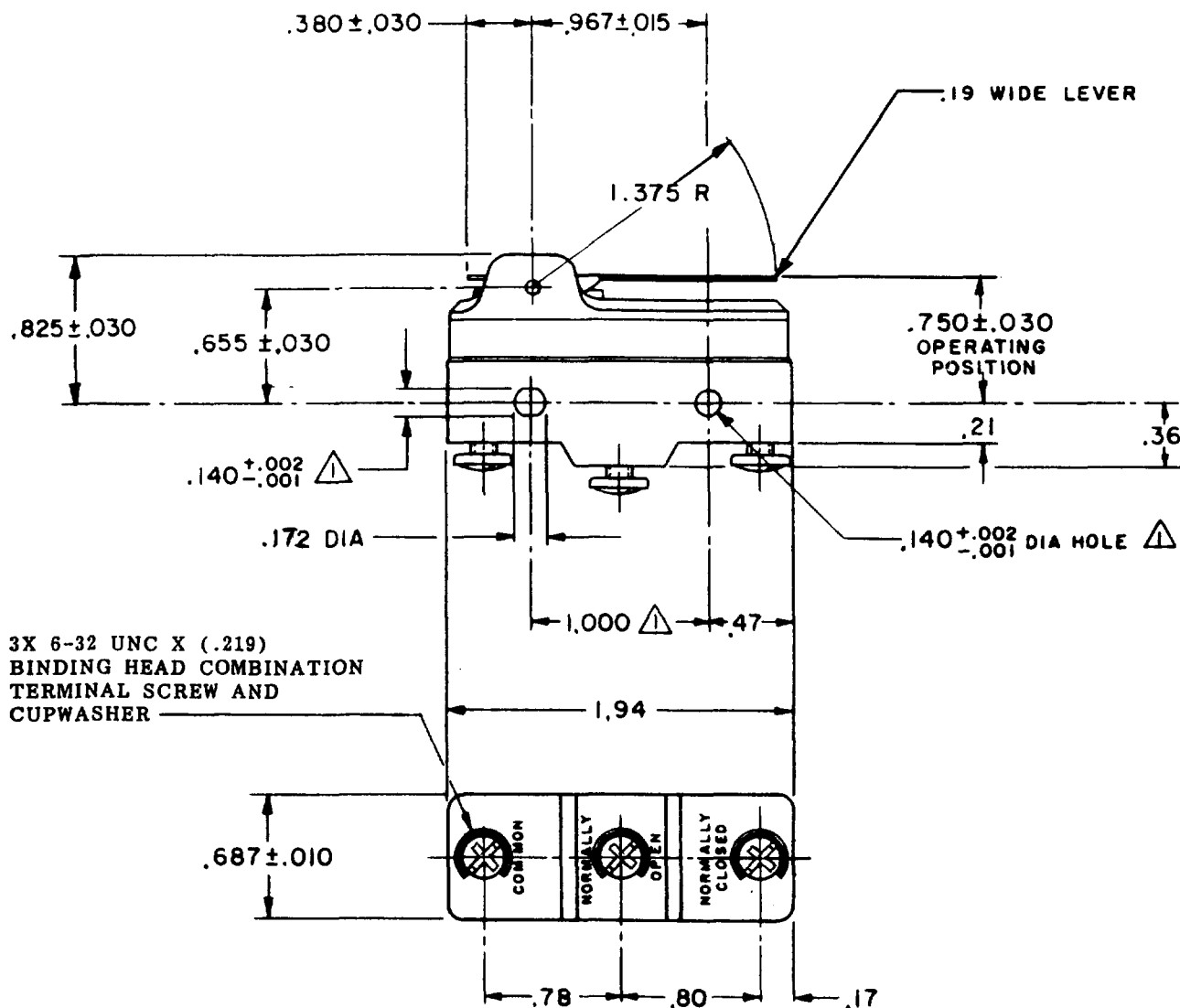
DAW

CHECK

MBF

FORMTEK

FO-90378

3X 6-32 UNC X (.219)  
BINDING HEAD COMBINATION  
TERMINAL SCREW AND  
CUPWASHER

## NOTE

⚠ - MOUNTING HOLES WILL ACCEPT PINS OR SCREWS  
OF .139 MAX DIA ON 1.000 ± .002 CENTERS.

THIS DRAWING COVERS A PROPRIETARY ITEM AND IS THE PROPERTY OF MICRO SWITCH, A DIVISION OF MINNEAPOLIS-HONEYWELL REGULATOR CO. THIS DRAWING IS NOT TO BE COPIED OR USED WITHOUT THE APPROVAL OF MICRO SWITCH.

## CHARACTERISTICS

OPERATING FORCE — — — 3.5 OZ MAX

RELEASE FORCE — — — — — 1 OZ MIN

PRETRAVEL — — — — — .290 MAX

DIFFERENTIAL TRAVEL — — — .024 MAX

OVERTRAVEL — — — — — .062 MIN

## ELECTRICAL DATA

CONTACT ARRANGEMENT  
S P D T

-L33-

20 A-125, 250, OR 480 VAC  
1 HP-125 VAC; 2 HP-250 VAC  
0.5 A-125 VDC; 0.15 A-250 VDC

-L288-



-L308-

20(3)A 250V ~ T85 5E4

-L315-

## SCALE FULL

DO NOT SCALE PRINT

UNLESS OTHERWISE  
NOTED

DIMENSIONS ARE IN INCHES

TOLERANCES ARE:

ONE PLACE (.0) ± .030  
TWO PLACE (.001) ± .015  
THREE PLACE (.000) ± .005  
ANGLES ±

WEIGHT

# Mouser Electronics

Authorized Distributor

Click to View Pricing, Inventory, Delivery & Lifecycle Information:

[Honeywell:](#)

[BA-1RV111-A2](#)