

MICRO SWITCH

A DIVISION OF MINNEAPOLIS-HONEYWELL REGULATOR COMPANY
PHILADELPHIA, PENNSYLVANIA
FED. MFR. CODE 91929

SWITCH-BASIC

CATALOG LISTING

1HS6

MILITARY STANDARD
MS 25011-4

(M) 1HS6
ISSUE 6

REPLACES

RELEASE NO.

1HS6

PAGE 1 OF 1

M

DRAWING
NUMBER

17

ISSUE

CHECK

REVISIONS

A C094121
DLT
2 APR 99

CHECK

22 SEP 60

GCH

CHECK

60

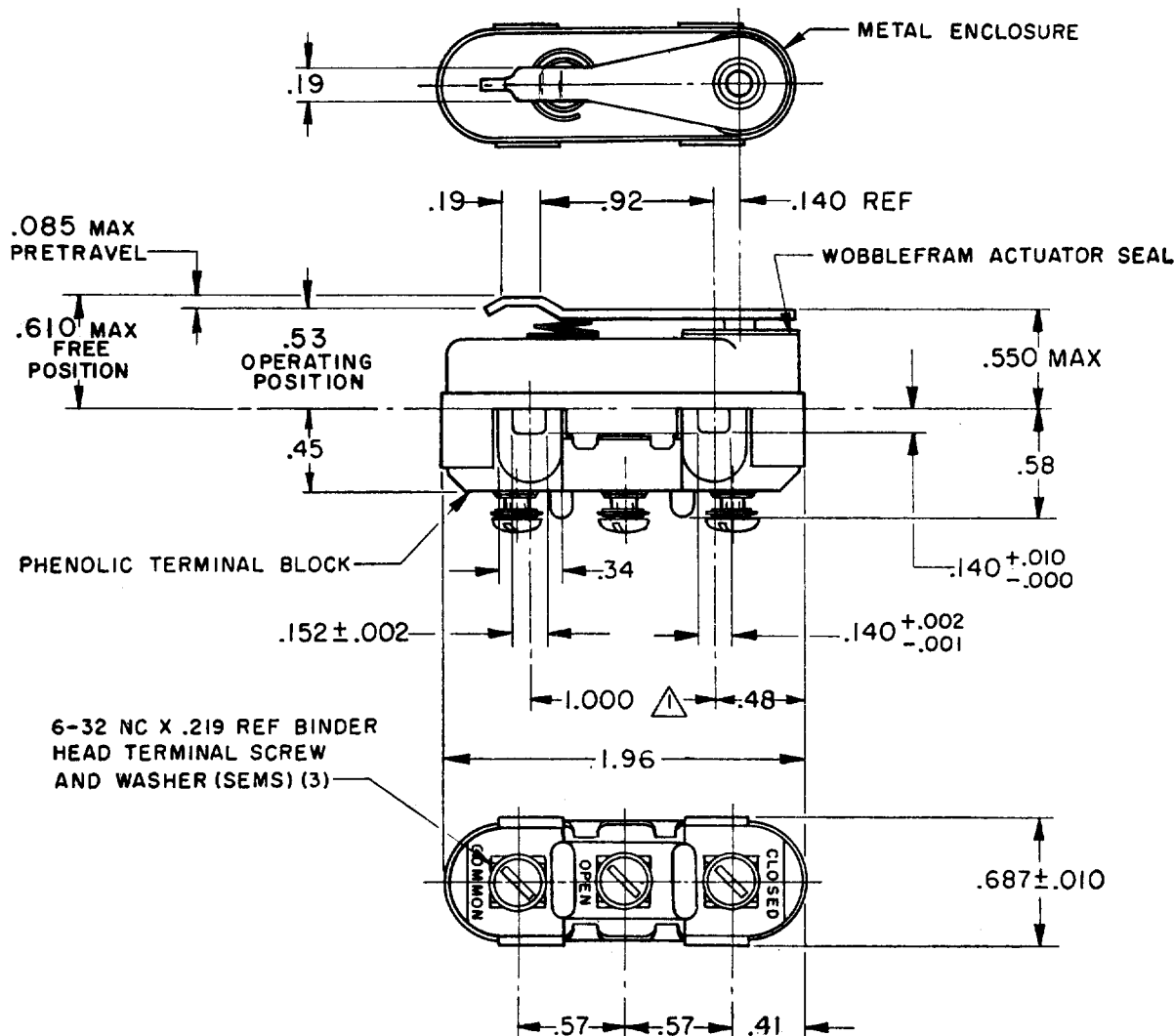
SEP

LMH

14

FORMTEK

FO-50378



NOTES

- ▲ MOUNTING HOLES WILL ACCEPT PINS OR SCREWS OF .139 MAX DIA ON 1.000 ± .002 CENTERS
- 2- TRAVEL CHARACTERISTICS ARE REFERENCED FROM THE UPPER SURFACE OF THE MOUNTING HOLES WITH THIS CONSTRUCTION
- 3- FOR USE IN AMBIENT TEMPERATURE RANGE FROM MINUS 65° TO PLUS 250°F

THIS DRAWING COVERS A PROPRIETARY ITEM AND IS THE PROPERTY OF MICRO SWITCH, A DIVISION OF MINNEAPOLIS-HONEYWELL REGULATOR CO. THIS DRAWING IS NOT TO BE COPIED OR USED WITHOUT THE APPROVAL OF MICRO SWITCH.

CHARACTERISTICS		ELECTRICAL DATA		SCALE FULL
OPERATING FORCE-----22-28 OZ		CONTACT ARRANGEMENT S P D T		DO NOT SCALE PRINT
RELEASE FORCE-----4 OZ MIN				UNLESS OTHERWISE SPECIFIED
DIFFERENTIAL TRAVEL-----.020 MAX		LOAD		DIMENSIONS ARE IN INCHES
OVERTRAVEL-----.010 MIN		CURRENT CAPACITY (AMPERES)		TOLERANCES ARE:
		28 VDC 115 VAC, 60 HZ 120 VDC		ONE PLACE (.0) ±.030
		RESISTIVE 25		TWO PLACE (.00) ±.015
		INDUCTIVE 8		THREE PLACE (.000) ±.005
				ANGLES ±
		-L277- 5A-28 VDC		WEIGHT 1.6 OZ MAX

Mouser Electronics

Authorized Distributor

Click to View Pricing, Inventory, Delivery & Lifecycle Information:

[Honeywell:](#)

[1HS6](#)