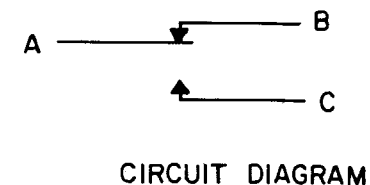


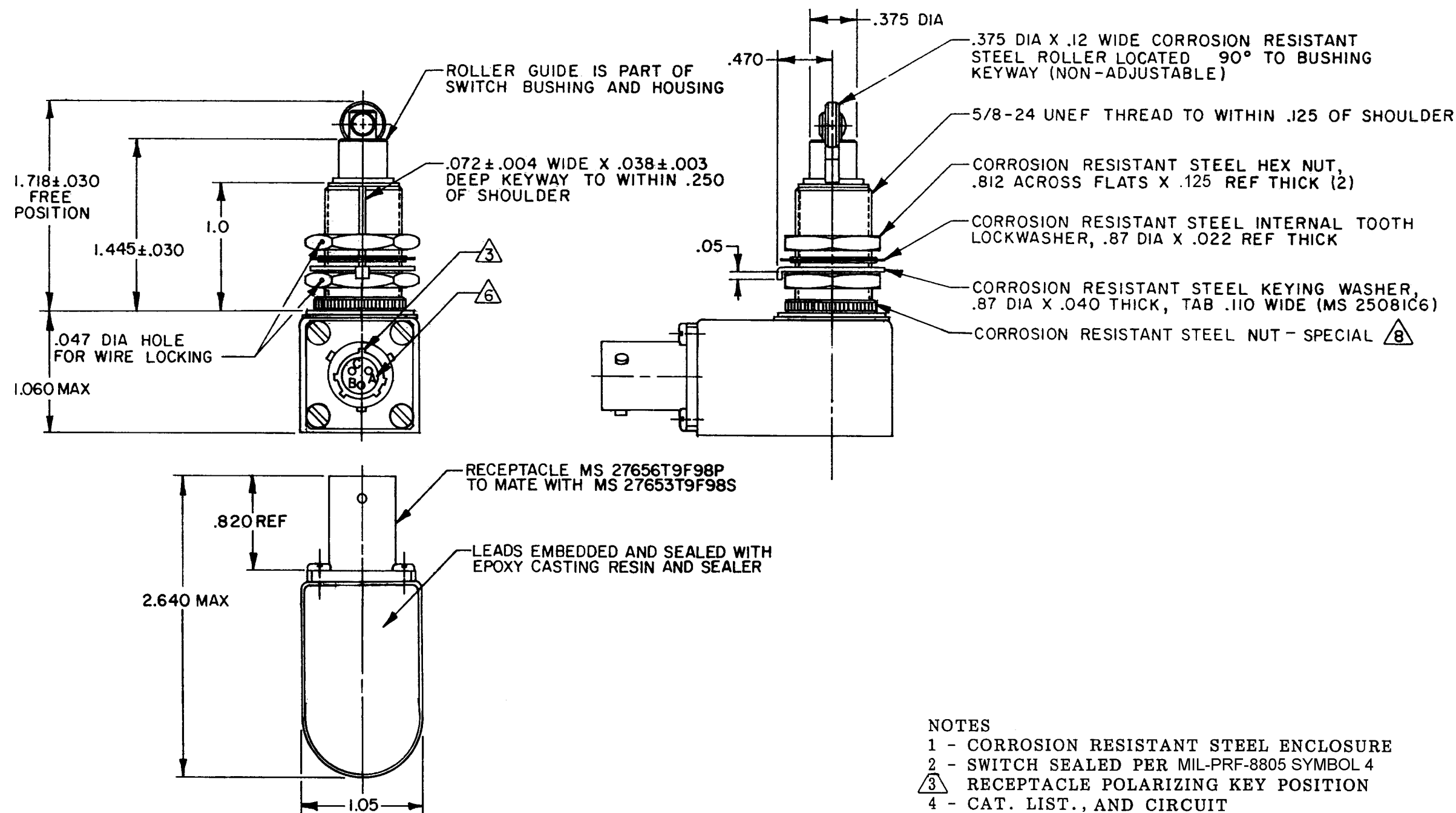
MICRO SWITCH
FREEPORT ILLINOIS U S A
A DIVISION OF HONEYWELL
FED. MFG. CODE 91929

SWITCH - ENCLOSED

CATALOG LISTING
21EN321-R



CIRCUIT DIAGRAM



NOTES

- 1 - CORROSION RESISTANT STEEL ENCLOSURE
- 2 - SWITCH SEALED PER MIL-PRF-8805 SYMBOL 4
- 3 - RECEPTACLE POLARIZING KEY POSITION
- 4 - CAT. LIST., AND CIRCUIT IDENTIFICATION ARE SHOWN ON NAMEPLATE
- 5 - SWITCH IS SKYDROL RESISTANT
- 6 - PIN LETTERS SHOWN FOR REFERENCE ONLY, THEY DO NOT NECESSARILY APPEAR ON RECEPTACLE
- 7 - HARDWARE MAY BE FURNISHED UNASSEMBLED
- 8 - NUT TO BE LOCKED IN PLACE USING LIQUID SEALANT

THIS DRAWING COVERS A PROPRIETARY ITEM AND IS THE PROPERTY OF MICRO SWITCH, A DIVISION OF HONEYWELL. THIS DRAWING IS NOT TO BE COPIED OR USED WITHOUT THE APPROVAL OF MICRO SWITCH.

THIRD ANGLE PROJECTION

SCALE FULL

DO NOT SCALE PRINT

UNLESS OTHERWISE SPECIFIED TOLERANCES ARE

ONE PLACE (.0) ±.030
TWO PLACE (.00) ±.015
THREE PLACE (.000) ±.005
ANGLES ±

RAW MATERIAL—COMMERCIAL STANDARD
MICRO SWITCH STANDARDS APPLY
DIMENSIONS ARE TO BE MET BEFORE
PROTECTIVE COATINGS ARE APPLIED

WEIGHT 7 OZ MAX

CHARACTERISTICS
OPERATING FORCE----- 6-12 LB
FULL OVERTRAVEL FORCE----- 30 LB MAX
RELEASE FORCE----- 4 LB MIN
PRETRAVEL----- .040 MAX
DIFFERENTIAL TRAVEL----- .010 MAX
OVERTRAVEL----- .250 MIN

ELECTRICAL DATA

CONTACT ARRANGEMENT

S P D T

28 VDC

LOAD	SEA LEVEL	50,000 FT
RES	4	4
IND	2	2
MOTOR	4	

CATALOG LISTING
21EN321-R
PAGE 1 OF 1

ISSUE
M
14

REVISIONS

A	085	CO 47488
24	MAR 80	RE-INST
B	PR-14918	
18	AUG 86	WJK
C	CO61705	TSK
29	MAY 87	
D	CO61354	TSK
13	NOV 87	
E	CO65806	KAK
12	MAY 89	
F	CO66322	TJO
12	SEP 89	
G	CO79951	DLT
25	FEB 95	
H	204049	CSL
1	OCT 01	
J	0035971	
	MST	
	05DEC07	

RASTER
FO-5251-A

DRAWN

WJK 18 AUG 86

Mouser Electronics

Authorized Distributor

Click to View Pricing, Inventory, Delivery & Lifecycle Information:

[Honeywell:](#)

[21EN321-R](#)