

MICRO SWITCH

A DIVISION OF MINNEAPOLIS-HONEYWELL REGULATOR COMPANY

MINNEAPOLIS, MINNESOTA

FED. MFR. CODE 91929

SWITCH - BASIC

CATALOG LISTING

BZ-2RW822T

APF5000

BZ-2RW822T

PAGE 1 OF 1

M

DRAWING
NUMBER

1213

ISSUE

REPLACES

RELEASE NO.

CHECK

RJ

CHECK

RJ

CHECK

RJ

CHECK

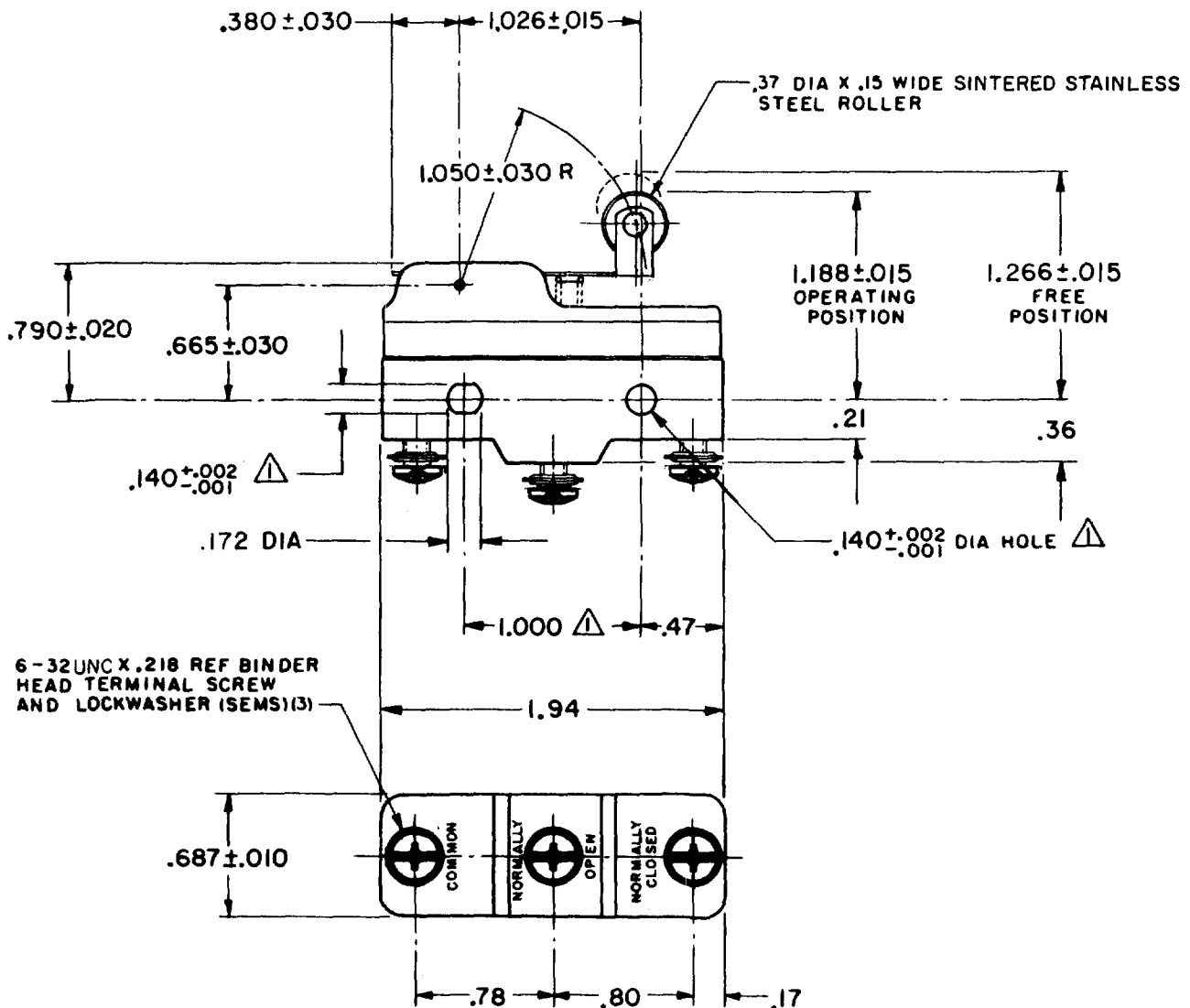
RJ

CHECK

RJ

CHECK

RJ



6-32UNC X .218 REF BINDER
HEAD TERMINAL SCREW
AND LOCKWASHER (SEMS) (3)

NOTE

△ - MOUNTING HOLES WILL ACCEPT PINS OR SCREWS
OF .139 MAX DIA ON 1.000 ± .002 CENTERS

THIS DRAWING COVERS A PROPRIETARY ITEM AND IS THE PROPERTY OF MICRO SWITCH, A DIVISION OF MINNEAPOLIS-HONEYWELL REGULATOR CO. THIS DRAWING IS NOT TO BE COPIED OR USED WITHOUT THE APPROVAL OF MICRO SWITCH.

CHARACTERISTICS

OPERATING FORCE-----6 OZ MAX

RELEASE FORCE-----1 1/2 OZ MIN

DIFFERENTIAL TRAVEL-----.003 - .020

OVERTRAVEL-----.094 MIN

ELECTRICAL DATA

CONTACT ARRANGEMENT
S P D T

- L74 - 15A-125, 250, OR 480 VAC; 2A-600 VAC
1/2 A-125 VDC; 1/4 A-250 VDC
1/8 HP-125 VAC; 1/4 HP-250 VAC

-L288-
-L306-
-L315-

CE EN 05 EC

T85 5E4

16A 250V ~ T85 5E4

SCALE FULL

DO NOT SCALE PRINT

UNLESS OTHERWISE
SPECIFIED
DIMENSIONS ARE IN INCHES
TOLERANCES ARE:

ONE PLACE (.0) ±.030
TWO PLACE (.00) ±.015
THREE PLACE (.000) ±.005
ANGLES ±

WEIGHT .076 LB

FORMTEK

FO-50378

DRAWN

GCH

10 APRIL 62

Mouser Electronics

Authorized Distributor

Click to View Pricing, Inventory, Delivery & Lifecycle Information:

[Honeywell:](#)

[BZ-2RW822T](#)