

CATALOG LISTING

13AT10

PAGE 1 OF 1

M

DRAWING NUMBER

10

ISSUE

RELEASE NO.

PR - 1900

REVISIONS

A	00-52725	KAG	JUN 83
B	CO 66089	D A W	13 FEB 91
C	206093	C S L	29 JUL 02

7 JAN 83

7 JAN 83

FO-52851-B

DRAWN

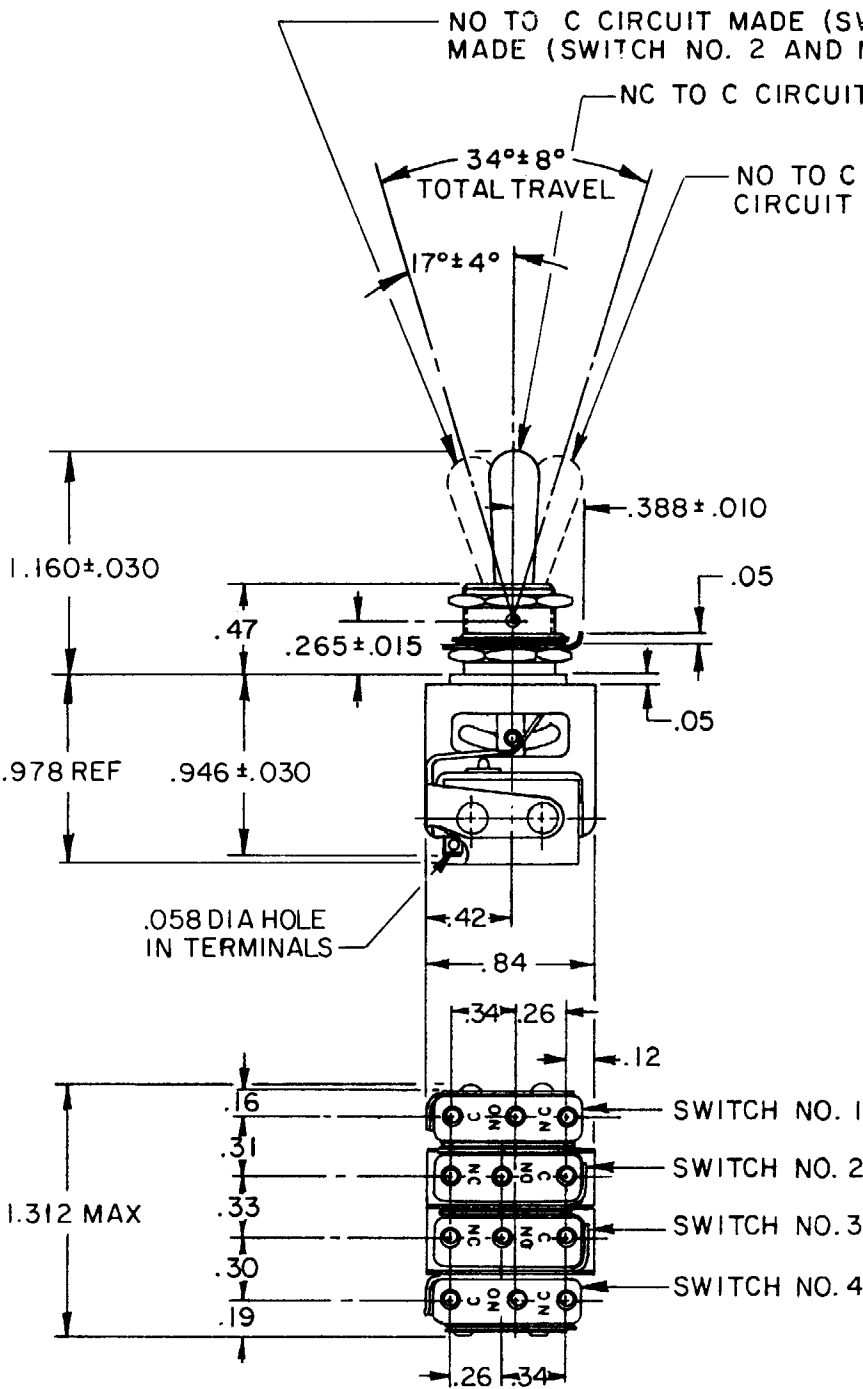
KAG

1 JUN 83

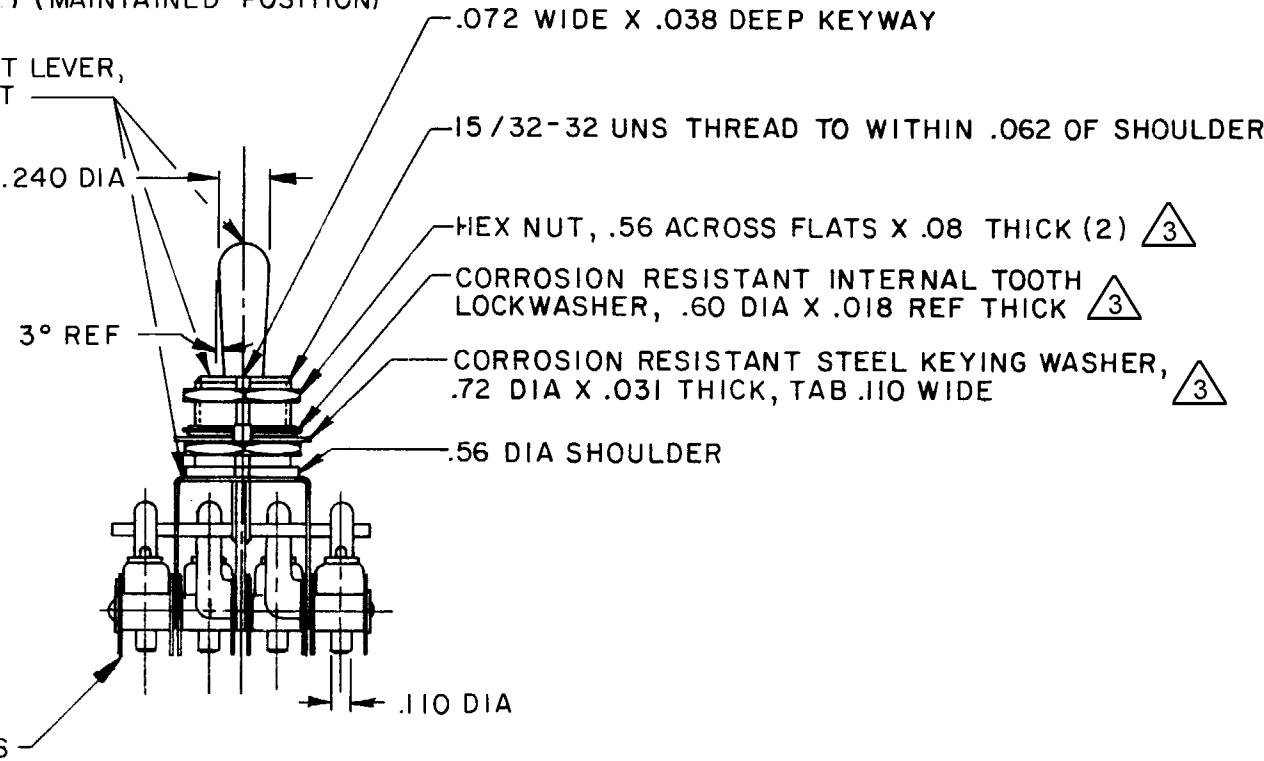
**MICRO SWITCH**  
 FREEPORT, ILLINOIS, U.S.A.  
 A DIVISION OF HONEYWELL  
 FED. MFG. CODE 91929

# ASSEMBLY- TOGGLE SWITCH

CATALOG LISTING  
 13AT10



CORROSION RESISTANT LEVER, BUSHING AND BRACKET



- NOTES
- 1 - UNIT INCLUDES CATALOG LISTING 1SM1 TYPE BASIC SWITCH (4)
  - 2 - TERMINALS ARE PLATED FOR SOLDERING
  - 3 - HARDWARE FURNISHED ASSEMBLED WITH SWITCH OR IN PACKET PER MIL-PRF-8805
  - 4 - REPLACEMENT MOUNTING PACKET 15PA312-AT

THIS DRAWING COVERS A PROPRIETARY ITEM AND IS THE PROPERTY OF MICRO SWITCH, A DIVISION OF HONEYWELL. THIS DRAWING IS NOT TO BE COPIED OR USED WITHOUT THE APPROVAL OF MICRO SWITCH.

## CHARACTERISTICS

## ELECTRICAL DATA

CONTACT ARRANGEMENT  
 S P D T (4)

250 VAC ----- 5 AMP  
 30 VOLTS DC RATING  
 INDUCTIVE ----- SEA LEVEL-- 3 AMP  
 50,000 FT -- 2.5 AMP  
 RESISTIVE ----- SEA LEVEL-- 5 AMP  
 50,000 FT -- 5 AMP  
 MAXIMUM INRUSH ----- 24 AMP

SCALE FULL

DO NOT SCALE PRINT

TOLERANCES			
APPLY TO DESIGN UNITS. CONVERSIONS ARE ONLY FOR REFERENCE. UNLESS NOTED, TOLERANCES ARE ±			
DIM.	TOL.	DIM.	TOL.
mm	mm/in	in	mm/in
NO PLACES	1/04		
ONE PLACE	0.4/015	X X	0.8/03
TWO PLACES	0.15/006	X XX	0.387/015
THREE PLACES		X XXX	0.137/005
ANGLES			
SI METRIC		US CUSTOMARY	
DESIGN UNITS		THIRD ANGLE PROJECTION	
		WEIGHT	

# Mouser Electronics

Authorized Distributor

Click to View Pricing, Inventory, Delivery & Lifecycle Information:

[Honeywell:](#)

[13AT10](#)