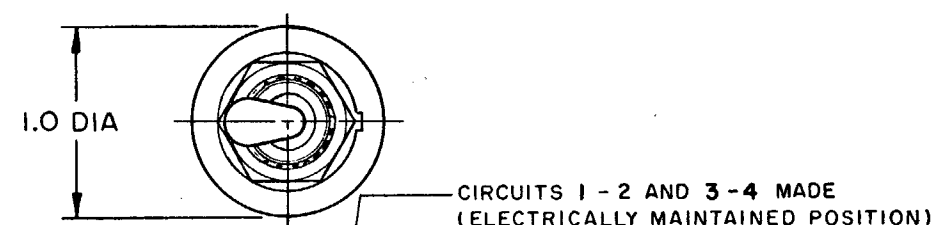


MICRO SWITCH

A DIVISION OF MINNEAPOLIS-HONEYWELL REGULATOR COMPANY
FREEPORT, ILLINOIS
FED. MFR. CODE 31929

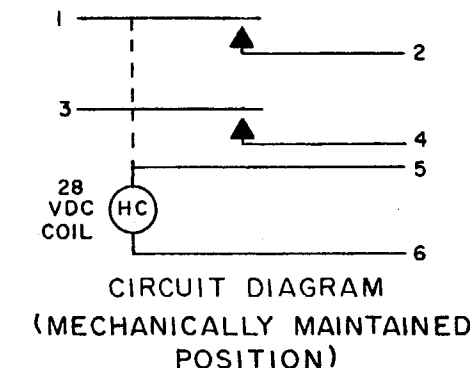
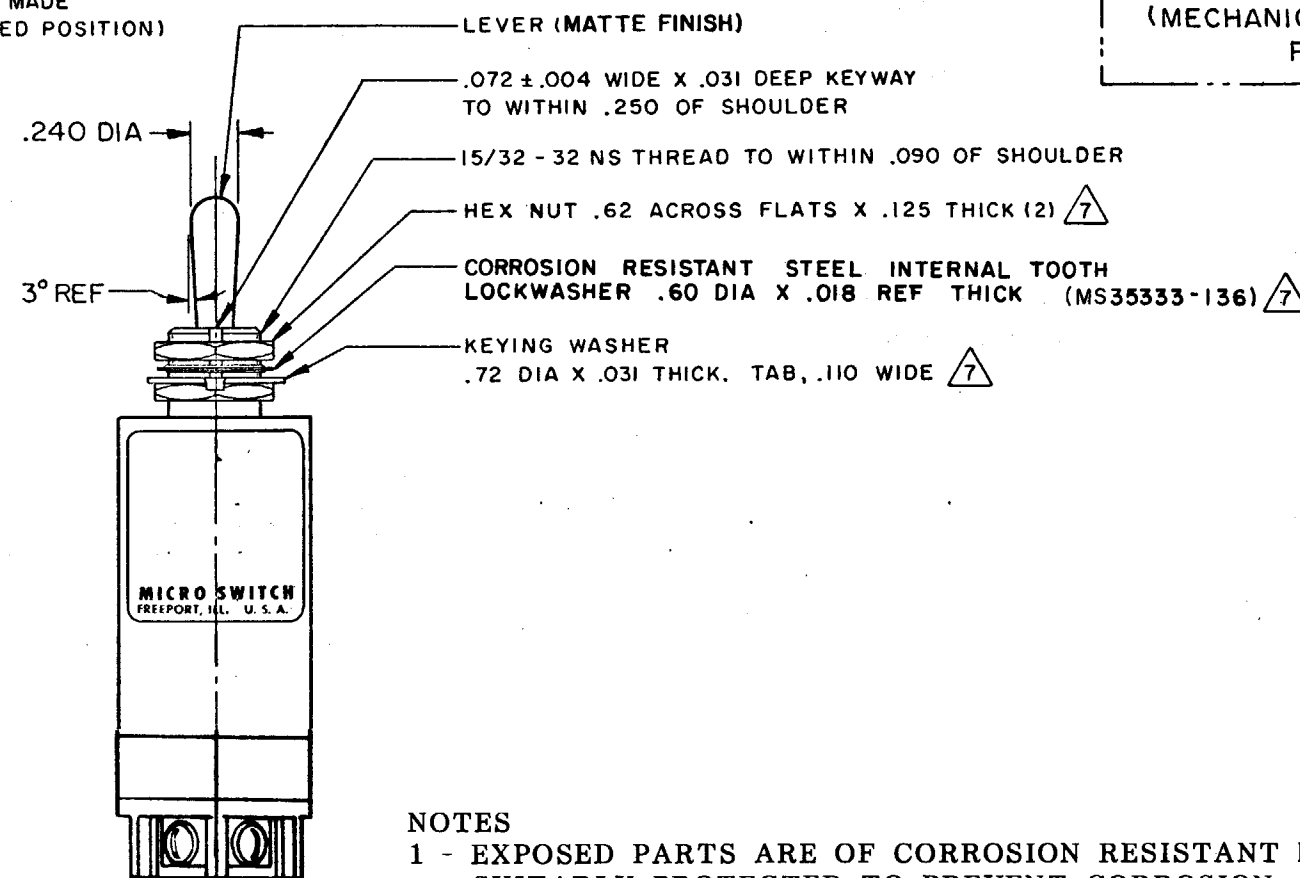
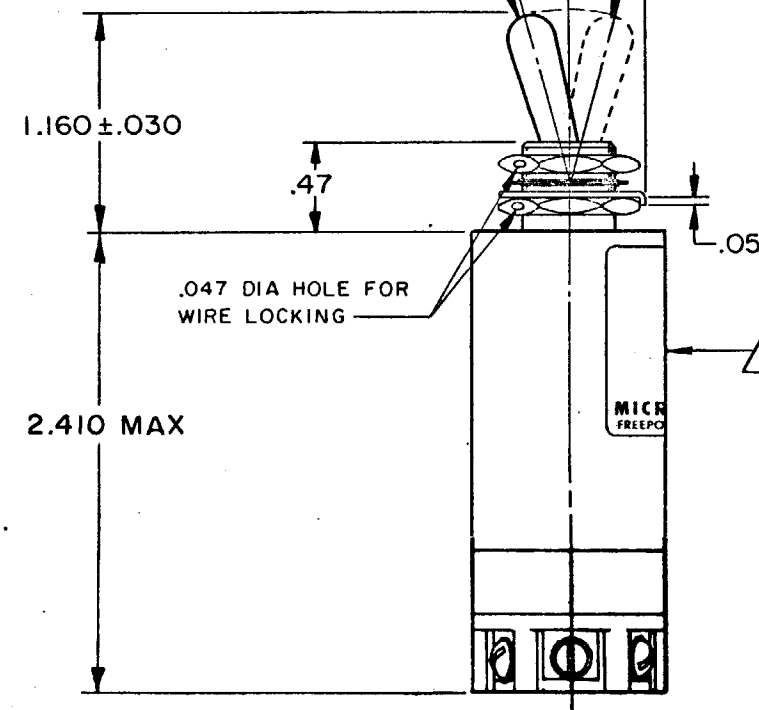
SWITCH - TOGGLE (MAGNETIC HOLD-IN)

CATALOG LISTING
26ET26-S



CIRCUITS 1-2 AND 3-4 OPEN
(MECHANICALLY MAINTAINED POSITION)

30° ± 4° TOTAL TRAVEL



NOTES

- 1 - EXPOSED PARTS ARE OF CORROSION RESISTANT MATERIAL OR ARE SUITABLY PROTECTED TO PREVENT CORROSION. ENCLOSURE FINISHED WITH BLUE EPOXY BASED ENAMEL COLOR NO. 25184 PER FEDERAL STANDARD 595
- 2 - SWITCH SEALED PER MIL-S-5594
- 3 - HOLD IN VOLTAGE: THE MINIMUM SPECIFIED VOLTAGE AT WHICH THE LEVER WILL REMAIN ACTUATED. HOLD IN MAY OCCUR AT A LOWER VALUE. DROP OUT VOLTAGE: THE VOLTAGE RANGE IN WHICH THE LEVER WILL BE RELEASED
- 4 - CIRCUITS CAN BE TRANSFERRED MANUALLY. ENERGIZING THE COIL WILL NOT CAUSE TRANSFER OF CIRCUITS
- 5 - CIRCUIT IDENTIFICATION AND CATALOG LISTING IS SHOWN ON SWITCH
- 6 - SWITCHES DO NOT NECESSARILY OPERATE SIMULTANEOUSLY
- 7 - HARDWARE MAYBE FURNISHED UNASSEMBLED PER MIL-S-5594

4-48 UNC X .188 REF LONG ROUND HEAD
TERMINAL SCREW AND LOCKWASHER (6)

THIS DRAWING COVERS A PROPRIETARY ITEM AND IS THE PROPERTY OF MICRO SWITCH, A DIVISION OF MINNEAPOLIS-HONEYWELL REGULATOR CO. THIS DRAWING IS NOT TO BE COPIED OR USED WITHOUT THE APPROVAL OF MICRO SWITCH.

CHARACTERISTICS	ELECTRICAL DATA	SCALE FULL
SOLENOID RATING AT 20° C	CONTACT ARRANGEMENT S P N O (2)	DO NOT SCALE PRINT
STEADY STATE LIMITS-----20-29 VDC	RATING IN AMPERES	UNLESS OTHERWISE SPECIFIED DIMENSIONS ARE IN INCHES
HOLD IN-----15 VDC	VOLTAGE	TOLERANCES ARE:
DROP OUT-----0-15 VDC	SEA LEVEL	ONE PLACE (.0) ±.030
OVERRIDE FORCE AT 29 VDC-----10 LBMAX	65,000 FT	TWO PLACE (.00) ±.015
OPERATING FORCE-----7 LBMAX	RES IND MOTOR	THREE PLACE (.000) ±.005
COIL RESISTANCE-----220 OHM MIN	28 VOLTS DC	ANGLES
	4 2.5 4	
	4 2.0 4	
		WEIGHT 4.0 OZ MAX

26ET26-S

M

DRAWING
NUMBER

28

38

38

38

38

38

38

38

38

38

38

38

38

38

38

38

38

38

38

38

38

38

38

38

38

38

38

38

38

Mouser Electronics

Authorized Distributor

Click to View Pricing, Inventory, Delivery & Lifecycle Information:

[Honeywell:](#)

[26ET26-S](#)