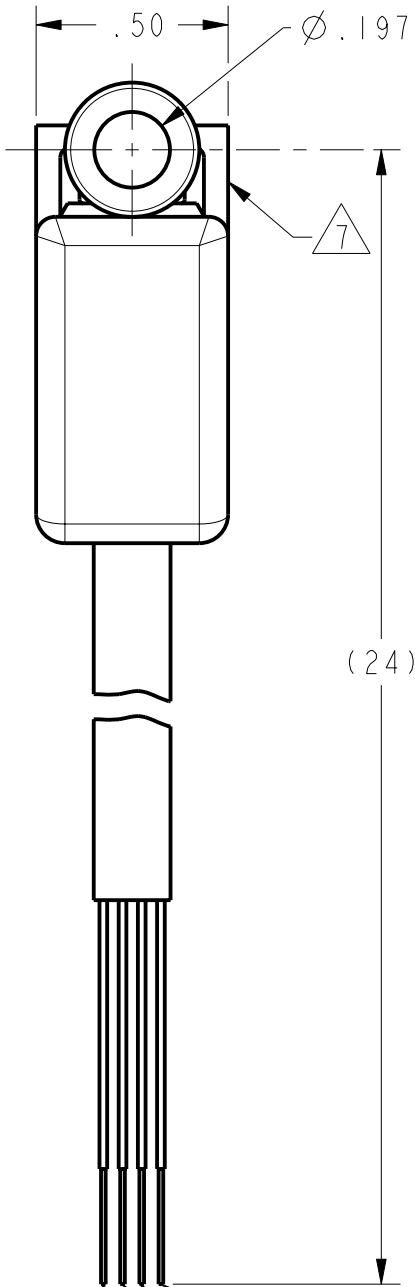
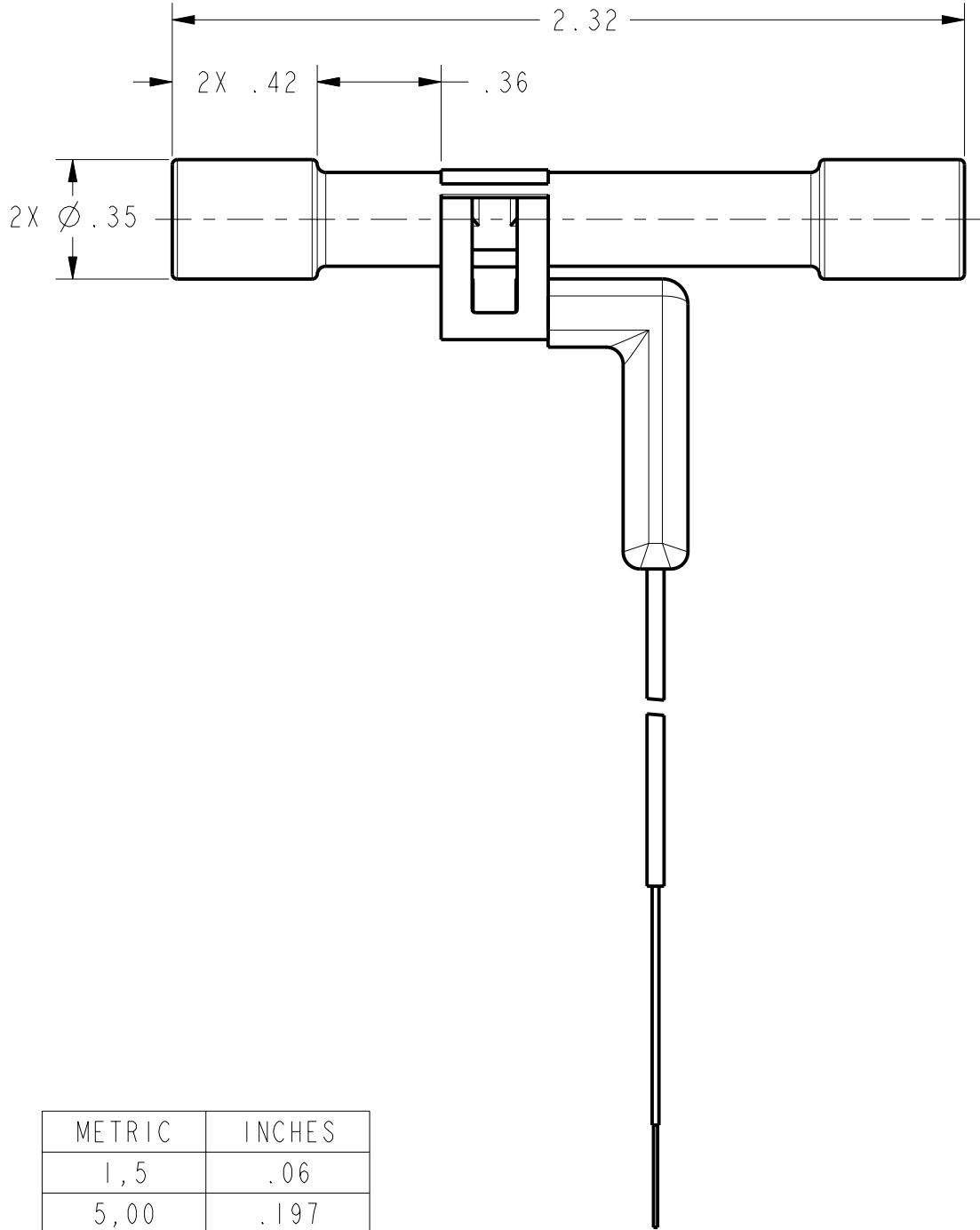


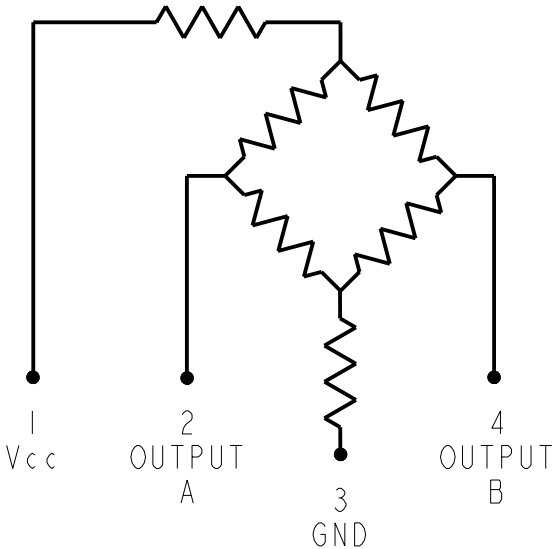
| REV | DOCUMENT | CHANGED BY | CHECK |
|-----|----------|-------------|-------|
| 1 | 200941 | WJC 30AUG00 | SAV |
| 2 | 204006 | TSM 25SEP01 | SAV |



- RED (POSITIVE +)
- WHITE (Vout +)
- BLACK (NEGATIVE -)
- GREEN (Vout -)

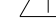


| METRIC | INCHES |
|--------|--------|
| 1,5 | .06 |
| 5,00 | .197 |
| 8,9 | .35 |
| 9,1 | .36 |
| 10,9 | .43 |
| 12,7 | .50 |
| 58,9 | 2.32 |
| 609,60 | 24.000 |

CIRCUIT DIAGRAM



OUTPUT "A"
INCREASES AS P2
PRESSURE INCREASES

OUTPUT "B"
DECREASES AS P2
PRESSURE INCREASES

| GENERAL OPERATING CHARACTERISTICS | | | | |
|--|-----------------|------|------|-------|
| (ELECTRICAL PERFORMANCE AT 10.00±0.01 VDC EXCITATION, 25°C) | | | | |
| PRESSURE RANGE (PSI) | 0-38 (AT 15PSI) | | | |
| | MIN | NOM | MAX | UNITS |
| SPAN (P2>P1)  | 37.5 | 39.5 | 41.5 | mV |
| NULL OFFSET | -1.5 | 0 | +1.5 | mV |
| | | TYP | MAX | UNITS |
| LINEARITY (BFSL, P2>P1) | | 0.1 | 0.5 | %SPAN |
| NULL SHIFT (0 TO 25°C, 25 TO 50°C)  | | ±0.7 | ±1.5 | mV |
| SPAN SHIFT (0 TO 25°C, 25 TO 50°C) P2>P1  | | ±1.0 | ±1.5 | %SPAN |
| REPEATABILITY AND HYSTERESIS | | ±0.2 | | %SPAN |
| OVERPRESSURE (P2>P1; P1>P2) | | | 60 | PSI |

| ALL PRESSURE RANGE | MIN | TYP | MAX | UNITS |
|--------------------|-----------------------------------|------|-------|-------|
| EXCITATION VOLTAGE | | 10 | 16 | VDC |
| INPUT RESISTANCE | 5.5K | 7.5K | 11.5K | OHMS |
| OUTPUT RESISTANCE | 1.5K | 2.5K | 3.0K | OHMS |
| RESPONSE TIME | | | 1.0 | ms |
| TEMPERATURE RANGES | | | | |
| STORAGE | -55°C TO +100°C (-67°F TO +212°F) | | | |
| OPERATE | -40°C TO +85°C (-40°F TO +185°F) | | | |
| COMPENSATED | 0 TO +50°C (+32°F TO +122°F) | | | |

- NOTES
- 1 SPAN IS THE ALGEBRAIC DIFFERENCE BETWEEN OUTPUT AT MINIMUM RATED OPERATING PRESSURE AND OUTPUT AT 0 PSI
 - 2 TEMPERATURE ERROR IS CALCULATED WITH RESPECT TO 25°C
 - 3 - INPUT MEDIA LIMITED ONLY TO THOSE MATERIALS THAT WILL NOT ATTACK SILICON, THE HOUSING MATERIAL OR SEAL MATERIAL
 - 4 - SENSOR IS OPERATIONAL OVER VACUUM PRESSURE RANGE
 - 5 - RATIO METRIC TO SUPPLY VOLTAGE
 - 6 - PIN 1 IS IDENTIFIED BY RED WIRE
 - 7 CATALOG LISTING AND DATE CODE HERE. CATALOG LISTING BRANDED AS 6JF5G. ALTERNATE FORMAT OF CATALOG LISTING BRAND IS ENTIRE CATALOG LISTING

UNLESS OTHERWISE SPECIFIED TOLERANCES ARE:
NO PLACE X ±.040 ±1
ONE PLACE .X ±.030 ±0,4
TWO PLACE .XX ±.015 ±0,15
THREE PLACE .XXX ±.005 ±
ANGLES ±
RAW MATERIAL-COMMERCIAL STANDARD

THIRD ANGLE PROJECTION

DRAWN WJC 30AUG00
CHECK SAV 30AUG00

THIS DRAWING COVERS A PROPRIETARY ITEM AND IS THE PROPERTY OF HONEYWELL SENSING AND CONTROL. THIS DRAWING IS NOT TO BE COPIED OR USED WITHOUT THE PERMISSION OF HONEYWELL.

DIMENSIONS ARE TO BE MET BEFORE PROTECTIVE COATINGS ARE APPLIED

3D PTC ASME Y14.5M-1994

Honeywell
Sensing and Control

TITLE
BRIDGE PRESSURE SENSOR

SIZE DWG TYPE DRAWING NAME REV
C M 26PCJFU5G 2

SCALE 2:1 WEIGHT SHEET 1 OF 1

Mouser Electronics

Authorized Distributor

Click to View Pricing, Inventory, Delivery & Lifecycle Information:

[Honeywell:](#)

[26PCJFU5G](#)