

MICRO SWITCH

FREEPORT ILLINOIS, U.S.A
A DIVISION OF HONEYWELL

FED. MFG. CODE 91929

ASSEMBLY- TOGGLE SWITCH

CATALOG LISTING

23AT446-T2

23AT446-T2

M

DRAWING
NUMBER

ISSUE

5

8

8

8

8

8

8

8

8

8

8

8

8

8

8

8

8

8

8

8

8

8

8

8

8

8

8

8

8

REPLACES X45315-AT

RELEASE NO. PR-8950

CHECK

CHECK

CHECK

CHECK

CHECK

CHECK

CHECK

CHECK

CHECK

CHECK

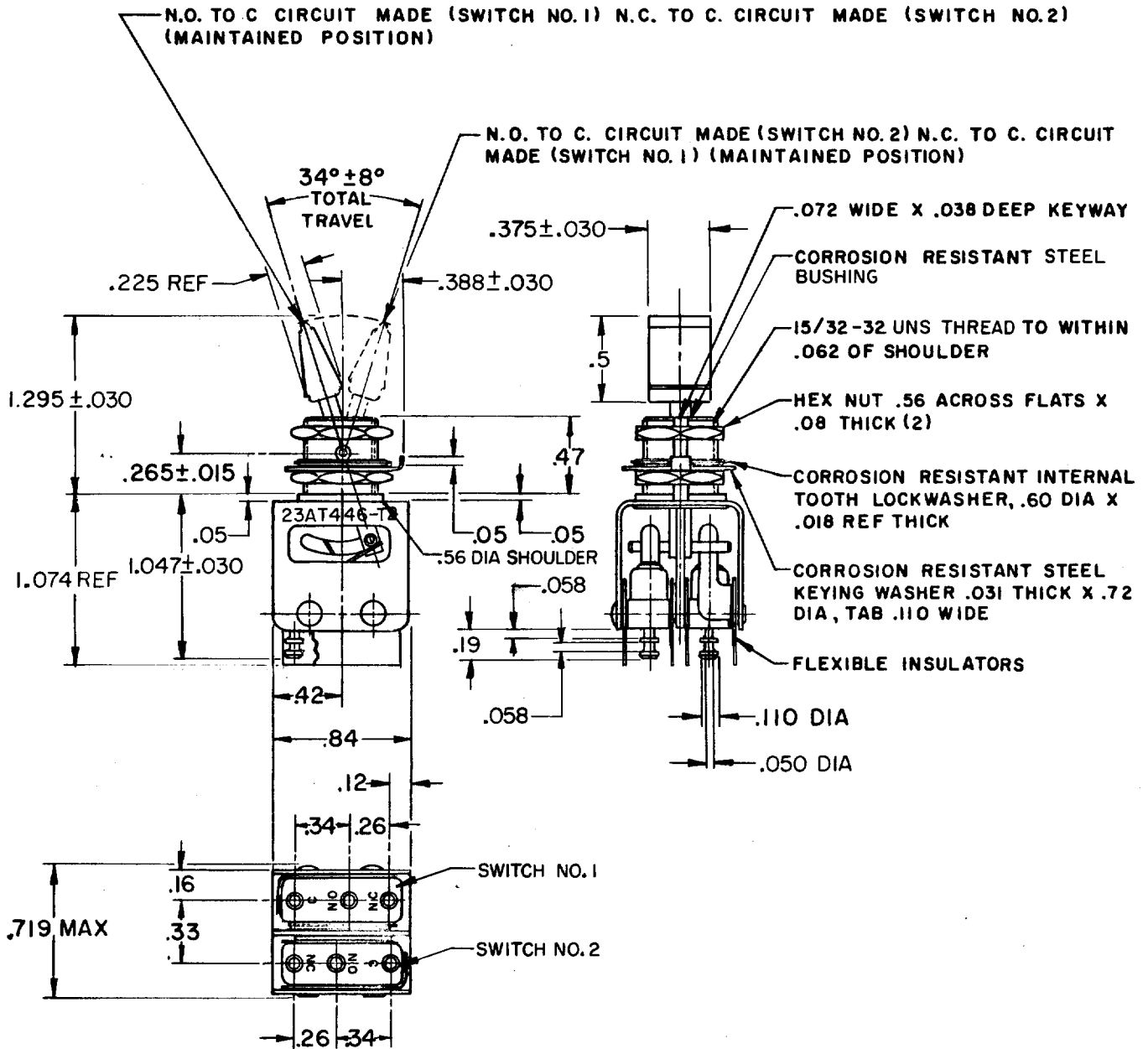
CHECK

CHECK

CHECK

CHECK

CHECK



NOTE

- 1-UNIT INCLUDES CAT. LIST. 1SMI-T2 BASIC SWITCH (2)
- 2-TERMINALS ARE PLATED FOR SOLDERING
- 3-LEVER AND TAB COVERED WITH EPOXY BASED PAINT PER FED.STD 595 NO.36440 LIGHT GRAY

THIS DRAWING COVERS A PROPRIETARY ITEM AND IS THE PROPERTY OF MICRO SWITCH, A DIVISION OF HONEYWELL. THIS DRAWING IS NOT TO BE COPIED OR USED WITHOUT THE APPROVAL OF MICRO SWITCH.

CHARACTERISTICS

ELECTRICAL DATA

SCALE FULL

CONTACT ARRANGEMENT
S P D T (2)

DO NOT SCALE PRINT

250 VAC ----- 5 AMP

30 VOLTS DC RATING

INDUCTIVE ----- SEA LEVEL -- 3 AMP

50,000 FT -- 2.5 AMP

RESISTIVE ----- SEA LEVEL -- 5 AMP

50,000 FT -- 5 AMP

MAXIMUM INRUSH ----- 24 AMP

UNLESS OTHERWISE
NOTED

DIMENSIONS ARE IN INCHES

TOLERANCES ARE:

ONE PLACE (.0) ±.030
TWO PLACE (.00) ±.015
THREE PLACE (.000) ±.005
ANGLES ±

WEIGHT .06 LB APPROX

Mouser Electronics

Authorized Distributor

Click to View Pricing, Inventory, Delivery & Lifecycle Information:

[Honeywell:](#)

[23AT446-T2](#)