

MICRO SWITCH

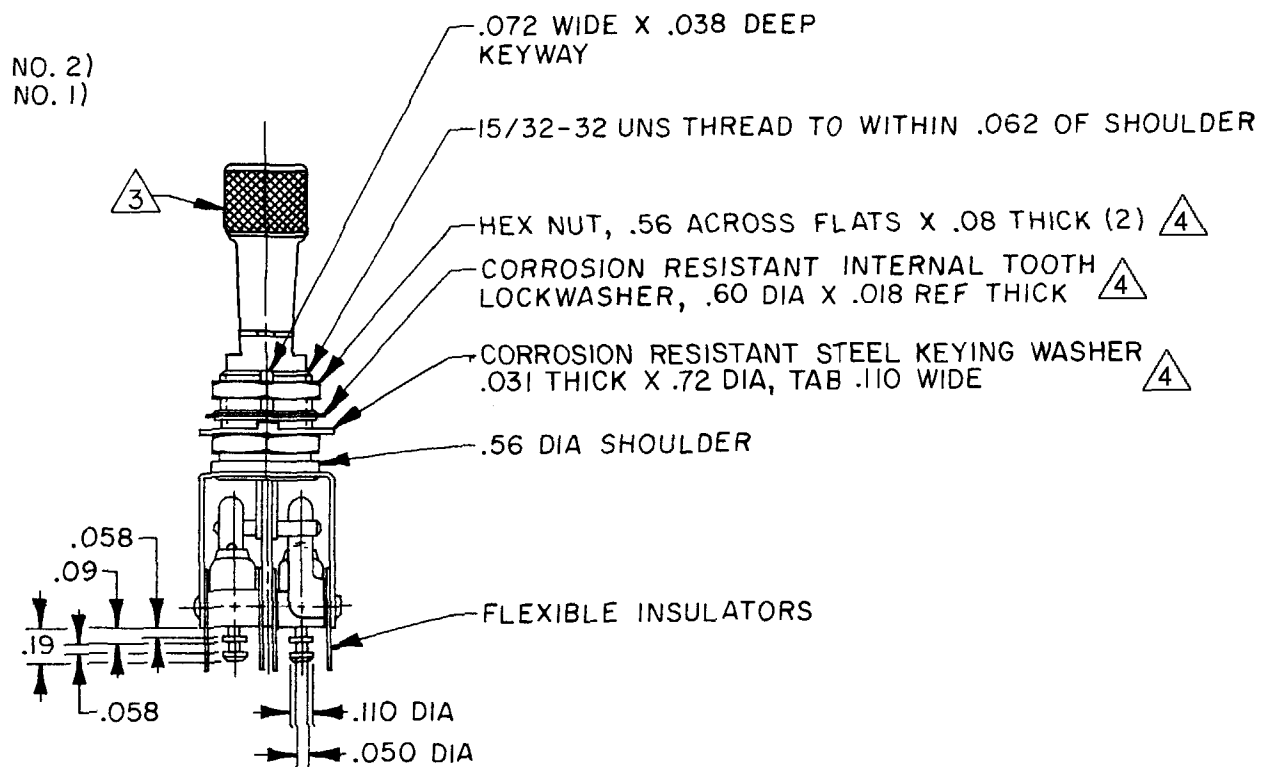
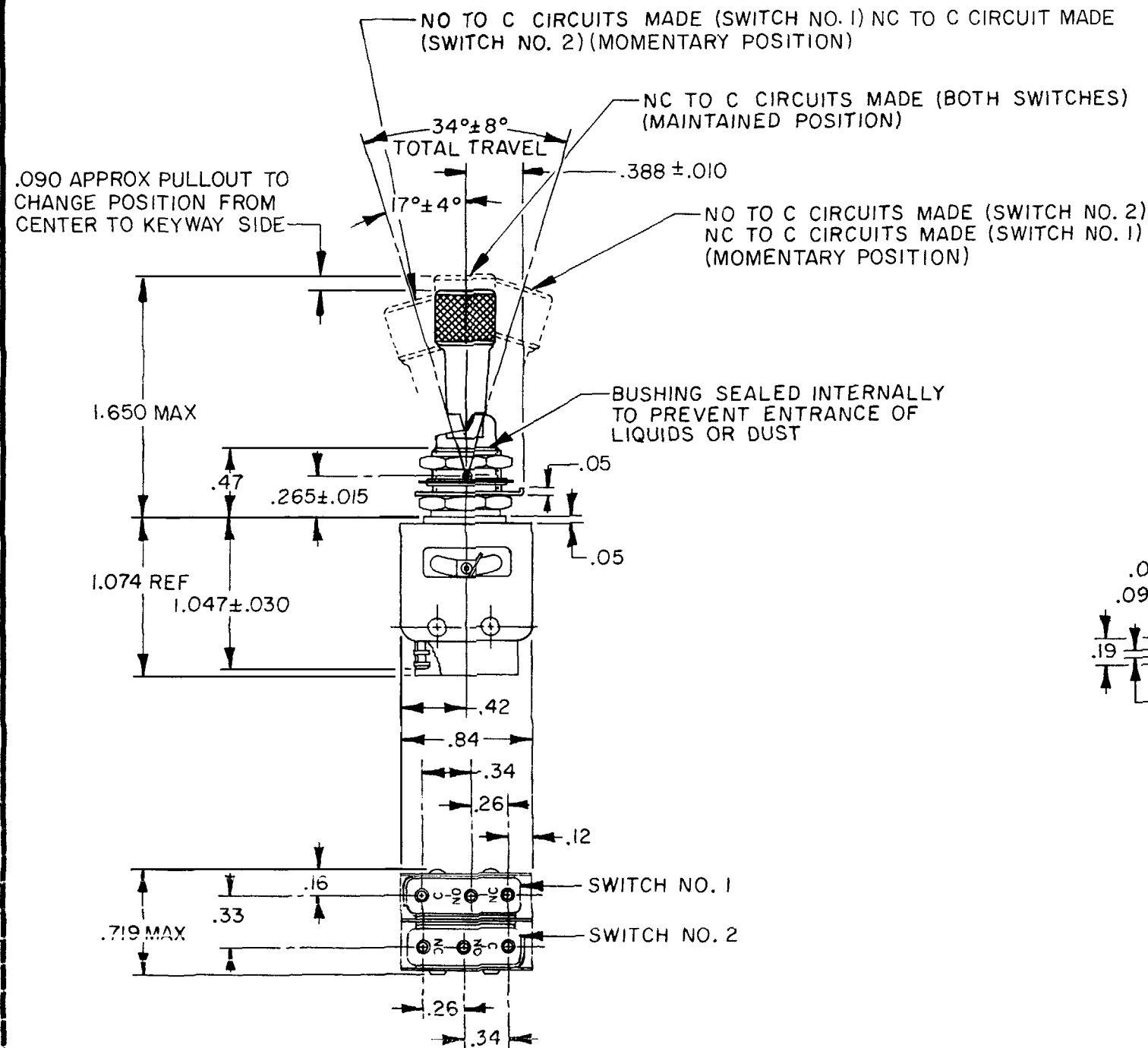
FREEPORT, ILLINOIS, U.S.A.
A DIVISION OF HONEYWELL

FED. MFG. CODE 91929

ASSEMBLY - TOGGLE SWITCH

CATALOG LISTING
13AT239-T2-L

13AT239-T2-L
DRAWING NUMBER
4
ISSUE
REVISIONS
A PRI4805
TSK 2 JUN 86
B CO66089
D A W 18 FEB 91
C 207105
JAH 03 JAN 02
CHECK
DRAWN
TSK 2 JUNE 86
CHECK
RELEASE NO. PR 14805
REPLACES



NOTES

- 1 - UNIT INCLUDES CAT LIST 1SM1-T2 TYPE BASIC SWITCH (2)
- 2 - TERMINALS ARE PLATED FOR SOLDERING
- 3 - WHITE LEVER
- 4 - HARDWARE FURNISHED ASSEMBLED WITH SWITCH OR IN PACKET PER MIL-PRF-8805
- 5 - REPLACEMENT MOUNTING HARDWARE PACKET 15PA312-AT

THIS DRAWING COVERS A PROPRIETARY ITEM AND IS THE PROPERTY OF MICRO SWITCH, A DIVISION OF HONEYWELL. THIS DRAWING IS NOT TO BE COPIED OR USED WITHOUT THE APPROVAL OF MICRO SWITCH.

CHARACTERISTICS

ELECTRICAL DATA

CONTACT ARRANGEMENT

S P D T (2)

250 VAC ----- 5 AMP

30 VOLTS DC RATING

INDUCTIVE ----- SEA LEVEL --- 3 AMP

50,000 FT --- 2.5 AMP

RESISTIVE ----- SEA LEVEL --- 5 AMP

50,000 FT --- 5 AMP

MAXIMUM INRUSH ----- 24 AMP

SCALE FULL

DO NOT SCALE PRINT

TOLERANCES

APPLY TO DESIGN UNITS. CONVERSIONS ARE ONLY FOR REFERENCE. UNLESS NOTED, TOLERANCES ARE ±

DIM.	TOL.	DIM.	TOL.
mm	mm/in	in	mm/in
NO PLACES	X	1/64	
ONE PLACE	X,X	0.4/0.18	X X
TWO PLACES	X,XX	0.15/0.06	X,XX
THREE PLACES	X,XXX	0.13/0.05	X,XXX

DESIGN UNITS

THIRD ANGLE PROJECTION

WEIGHT .06 LB

Mouser Electronics

Authorized Distributor

Click to View Pricing, Inventory, Delivery & Lifecycle Information:

[Honeywell:](#)

[13AT239-T2-L](#)