

MICRO SWITCHA DIVISION OF MINNEAPOLIS-HONEYWELL REGULATOR COMPANY
PREPONT, ILLINOIS

FED. MFR. CODE 91929

ASSEMBLY-SWITCH

CATALOG LISTING

17ACI-T**M 17ACI-T**DRAWING
NUMBERISSUE
10

REPLACES

RELEASE NO. SR 7894

CHECK

REVISIONS

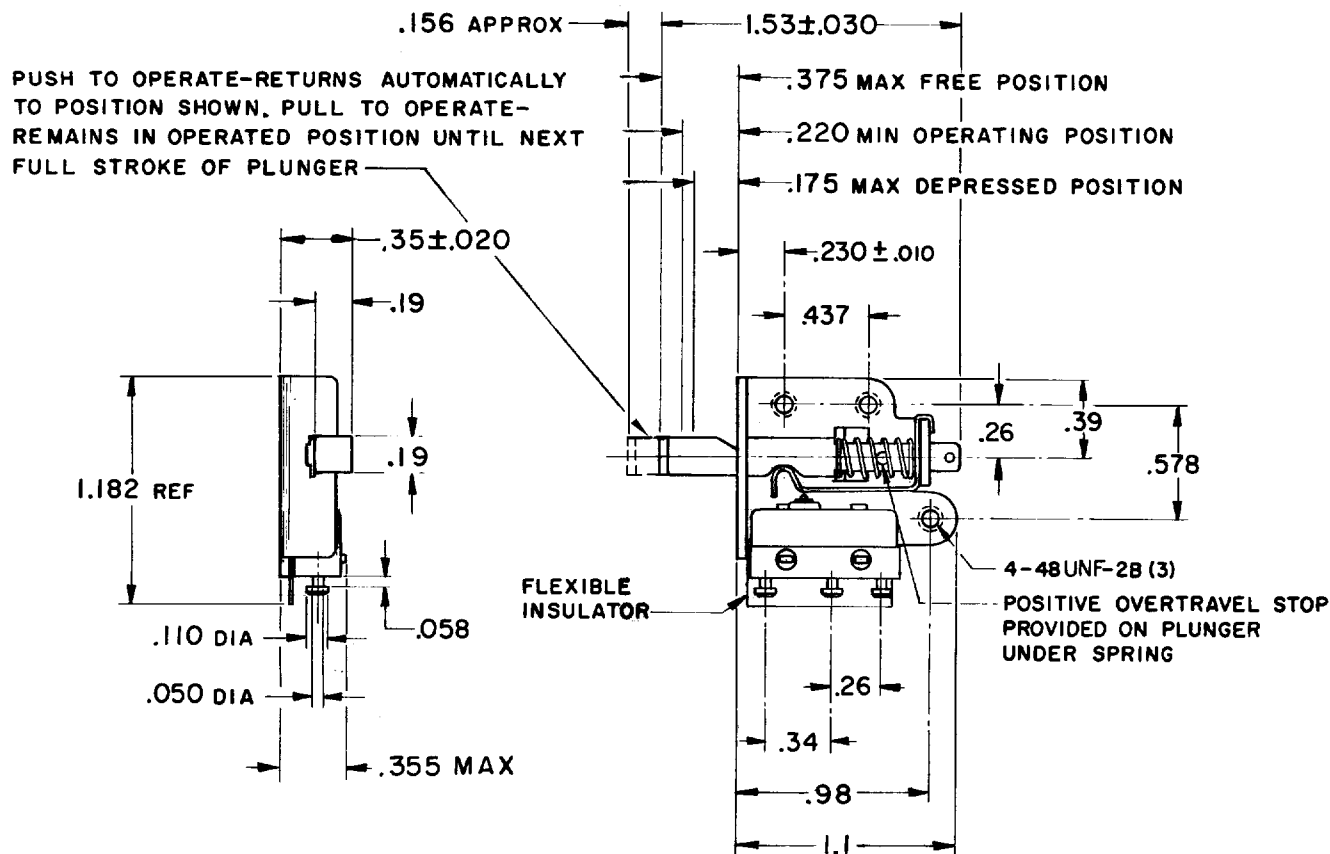
A	CORR	
13	RER	13 MAR 59
B	CO13528	
	RER	15 MAY 59
C	CO14049	
	MBF	18 SEP 59
D	CORR	
	OMW	2 FEB 60
E	CO15981	
	LSD	24 AUG 61
F	CO16231	
	LSD	12 SEP 61
G	CO23756	
	ORD	27 FEB 68
H	CO24376	
	RER	19 JUN 68
J	CO-82803-B	
	CSL	11 SEP 96

CHECK

R. E. R 5 NOV 58

FORMTEK

DRAWN



NOTE-

- 1-UNIT INCLUDES CAT. LIST. 11SMI-T BASIC SWITCH(1)
- 2-NOTCH IN ACTUATOR PLUNGER WILL PERMIT .045 MAX DISPLACEMENT BETWEEN END OF PLUNGER AND HOLE IN BRACKET

THIS DRAWING COVERS A PROPRIETARY ITEM AND IS THE PROPERTY OF MICRO SWITCH, A DIVISION OF MINNEAPOLIS-HONEYWELL REGULATOR CO. THIS DRAWING IS NOT TO BE COPIED OR USED WITHOUT THE APPROVAL OF MICRO SWITCH.

CHARACTERISTICS	ELECTRICAL DATA	SCALE FULL
TOTAL TRAVEL © .156 APPROX PUSH DIRECTION .156 APPROX PULL DIRECTION FULL OVERTRAVEL FORCE — 2 LBS APPROX	CONTACT ARRANGEMENT S P D T 250 VAC ————— 5 AMPS 30 VOLTS DC RATING INDUCTIVE ————— SEA LEVEL ——— 3 AMPS 50,000 FT. ——— 2.5 AMPS RESISTIVE ————— SEA LEVEL ——— 5 AMPS 50,000 FT. ——— 5 AMPS MAXIMUM INRUSH ————— 24 AMPS	DO NOT SCALE PRINT UNLESS OTHERWISE SPECIFIED DIMENSIONS ARE IN INCHES TOLERANCES ARE: ONE PLACE (.0) ±.030 TWO PLACE (.00) ±.015 THREE PLACE (.000) ±.005 ANGLES ± WEIGHT .02 LBS APPROX

Mouser Electronics

Authorized Distributor

Click to View Pricing, Inventory, Delivery & Lifecycle Information:

[Honeywell:](#)

[17AC1-T](#)