

CATALOG LISTING

102TP82 SERIES CHART 1

PAGE 1 OF 1

RELEASE NO. PR-20331

REPLACES -

ISSUE 4

CHECK

REVISIONS

A 204410

GJW

16 NOV 01

CHECK

SAV

16 NOV 01

CHECK

PTC/CAD 2D

DRAWN

GJW



16 NOV 01

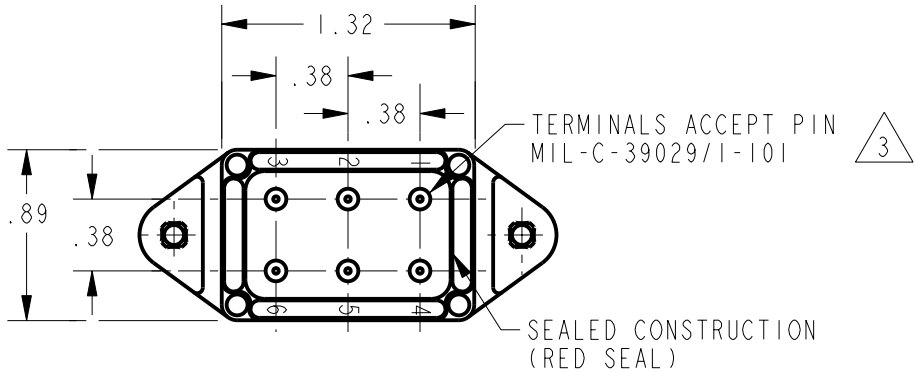
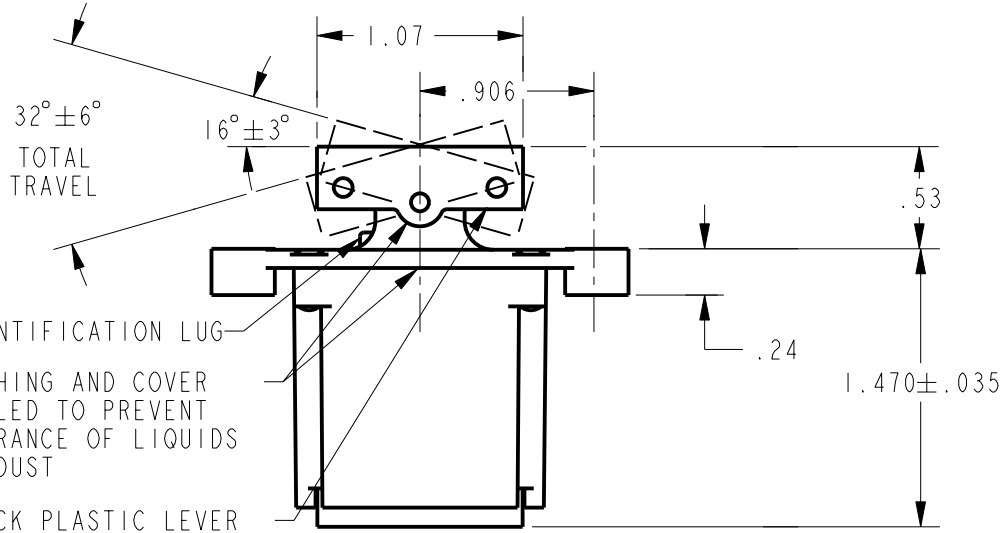
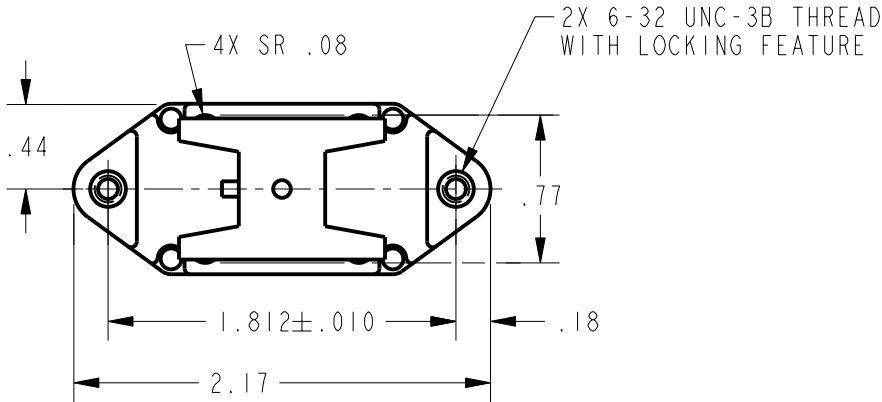
MICRO SWITCH  
a Honeywell Division  
FED. MFG. CODE 91929

SWITCH - TOGGLE  
ABOVE PANEL MOUNT

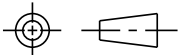
CATALOG LISTING  
102TP82 SERIES CHART 1

THIS DRAWING COVERS A PROPRIETARY ITEM AND IS THE PROPERTY OF MICRO SWITCH, A DIVISION OF HONEYWELL. THIS DRAWING IS NOT TO BE COPIED OR USED WITHOUT THE APPROVAL OF MICRO SWITCH

CATALOG LISTING	CIRCUIT MADE WITH BUTTON DEPRESSED ON			ELECTRICAL DATA
	LUG SIDE (1-2,4-5)	CENTER (1-2,4-5)	OPPOSITE LUG (2-3,5-6)	
102TP82-1	ON	OFF	ON	L191 15A 125, 250, 277 VAC 1/2HP 125 VAC 1HP 250, 277 VAC 5A 125 VAC "L" CE 
102TP82-2	OFF	NONE	ON	
102TP82-3	ON	NONE	ON	
102TP82-21	NONE	OFF	ON	
102TP82-31	NONE	ON	ON	
102TP82-4	MOM OFF	NONE	ON	L192 10A 125, 250, 277 VAC 1/4HP 125 VAC, 1/2HP 250, 277 VAC 3A 125 VAC "L" CE 
102TP82-5	MOM ON	OFF	ON	
102TP82-6	MOM ON	NONE	OFF	
102TP82-7	MOM ON	OFF	MOM ON	
102TP82-8	MOM ON	NONE	ON	
102TP82-51	NONE	ON	MOM ON	
102TP82-61	MOM ON	OFF	NONE	



- NOTES
- 1 - CIRCUIT DESIGNATION AND MICRO SWITCH CATALOG LISTING MARKED ON SIDE OF SWITCH
  - 2 - SWITCHES ARE CAPABLE OF WITHSTANDING A TEMPERATURE OF 160° F CONTINUOUSLY AT FULL RATED LOAD
  - 3 THE SEALING GROMMET SHALL SEAL ON A SMOOTH WIRE INSULATION OF Ø.040 TO Ø.083 (16-20 GAGE)
  - 4 - UNUSED TERMINAL HOLES MAY BE SEALED WITH PLUGS M83723/28-20
  - 5 APPLIES ONLY TO "ON" AND "MOMENTARY ON" POSITIONS

THIRD ANGLE PROJECTION	
	
SCALE	FULL
DO NOT SCALE PRINT	
UNLESS OTHERWISE SPECIFIED TOLERANCES ARE	
ONE PLACE	(.0) ±.030
TWO PLACE	(.00) ±.015
THREE PLACE	(.000) ±.005
ANGLES	±
WEIGHT	

# Mouser Electronics

Authorized Distributor

Click to View Pricing, Inventory, Delivery & Lifecycle Information:

[Honeywell:](#)

[102TP82-3](#) [102TP82-8](#) [102TP82-7](#)