

CATALOG LISTING
13AT26
PAGE 1 OF 1

M

DRAWING
NUMBER

7

ISSUE

REVISIONS

A 203820
G J W
30 AUG 01

B 204763
C S L
24 JAN 02

C 205663
G J W
10 JUN 02

RASTER
FO-52851-B

DRAWN

GJW

30AUG01

CHECK

30AUG01

SAV

30AUG01

CHECK

30AUG01

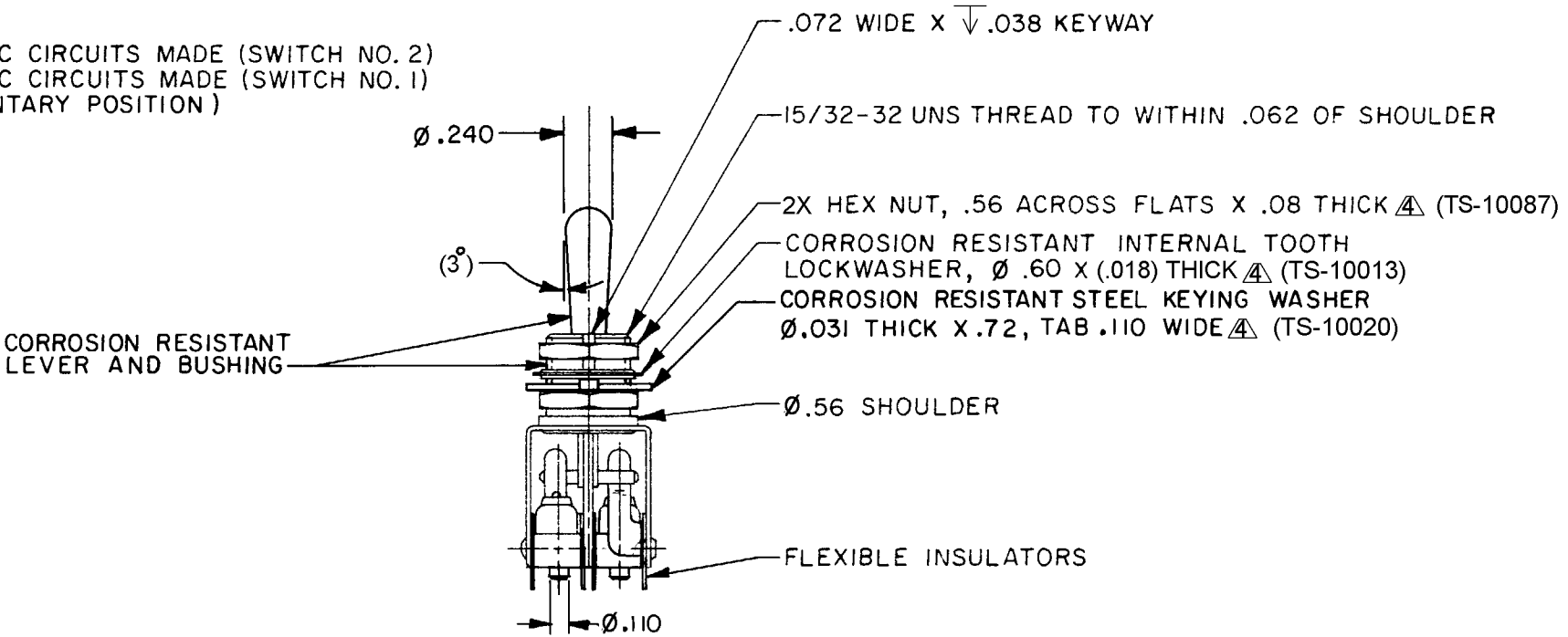
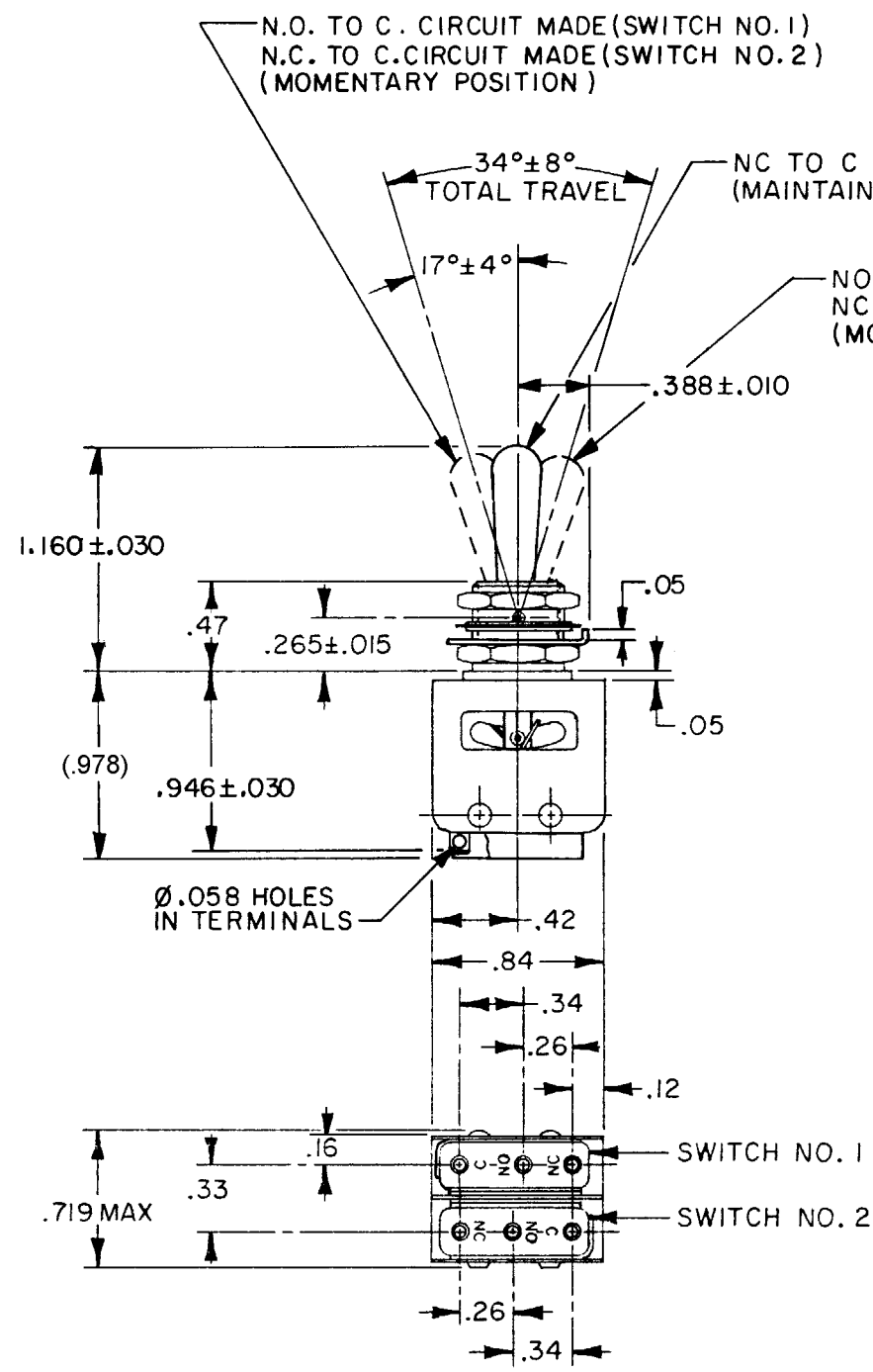
REPLACES

RELEASE NO. SR-7127

MICRO SWITCH
FREEPORT, ILLINOIS, U S A
A DIVISION OF HONEYWELL
FED. MFG. CODE 91929

**ASSEMBLY
TOGGLE SWITCH**

CATALOG LISTING
13AT26



ANSI Y14.5M-1982 APPLIES

THIS DRAWING COVERS A PROPRIETARY ITEM AND IS THE PROPERTY OF MICRO SWITCH, A DIVISION OF HONEYWELL. THIS DRAWING IS NOT TO BE COPIED OR USED WITHOUT THE APPROVAL OF MICRO SWITCH.

CHARACTERISTICS	ELECTRICAL DATA
	CONTACT ARRANGEMENT 2X SPDT
	30 VOLTS DC RATING INDUCTIVE ----SEA LEVEL-- 1/2 AMP 50,000 FT -- 1/2 AMP RESISTIVE ----SEA LEVEL-- 1 AMP 50,000 FT -- 1 AMP MAXIMUM INRUSH ----- 2 AMP

SCALE FULL			
DO NOT SCALE PRINT			
TOLERANCES APPLY TO DESIGN UNITS. CONVERSIONS ARE ONLY FOR REFERENCE. UNLESS NOTED, TOLERANCES ARE \pm			
DIM. mm	TOL. mm/in	DIM. in	TOL. mm/in
NO PLACES	X	17.04	
ONE PLACE	X, X	0.4/.016	X, X 0.8/.03
TWO PLACES	X, XX	0.15/.006	X, XX 0.38/.015
THREE PLACES	X, XXX		X, XXX 0.13/.005
ANGLES			
DESIGN UNITS	<input type="checkbox"/> SI METRIC	<input checked="" type="checkbox"/> US CUSTOMARY	
THIRD ANGLE PROJECTION			
WEIGHT			

- NOTES
- 1 - UNIT INCLUDES 2X CATALOG LISTING "1SM23" TYPE BASIC SWITCHES
 - 2 - TERMINALS ARE PLATED FOR SOLDERING
 - 3 - BASIC SWITCHES HAVE 24K GOLD OVERLAY CONTACTS
 - Δ 4 - HARDWARE FURNISHED ASSEMBLED WITH SWITCH OR IN PACKET 15PA312-AT PER MIL-PRF-8805
 - 5 - REPLACEMENT MOUNTING HARDWARE PACKET 15PA312-AT

Mouser Electronics

Authorized Distributor

Click to View Pricing, Inventory, Delivery & Lifecycle Information:

[Honeywell:](#)

[13AT26](#)