

# MICRO SWITCH

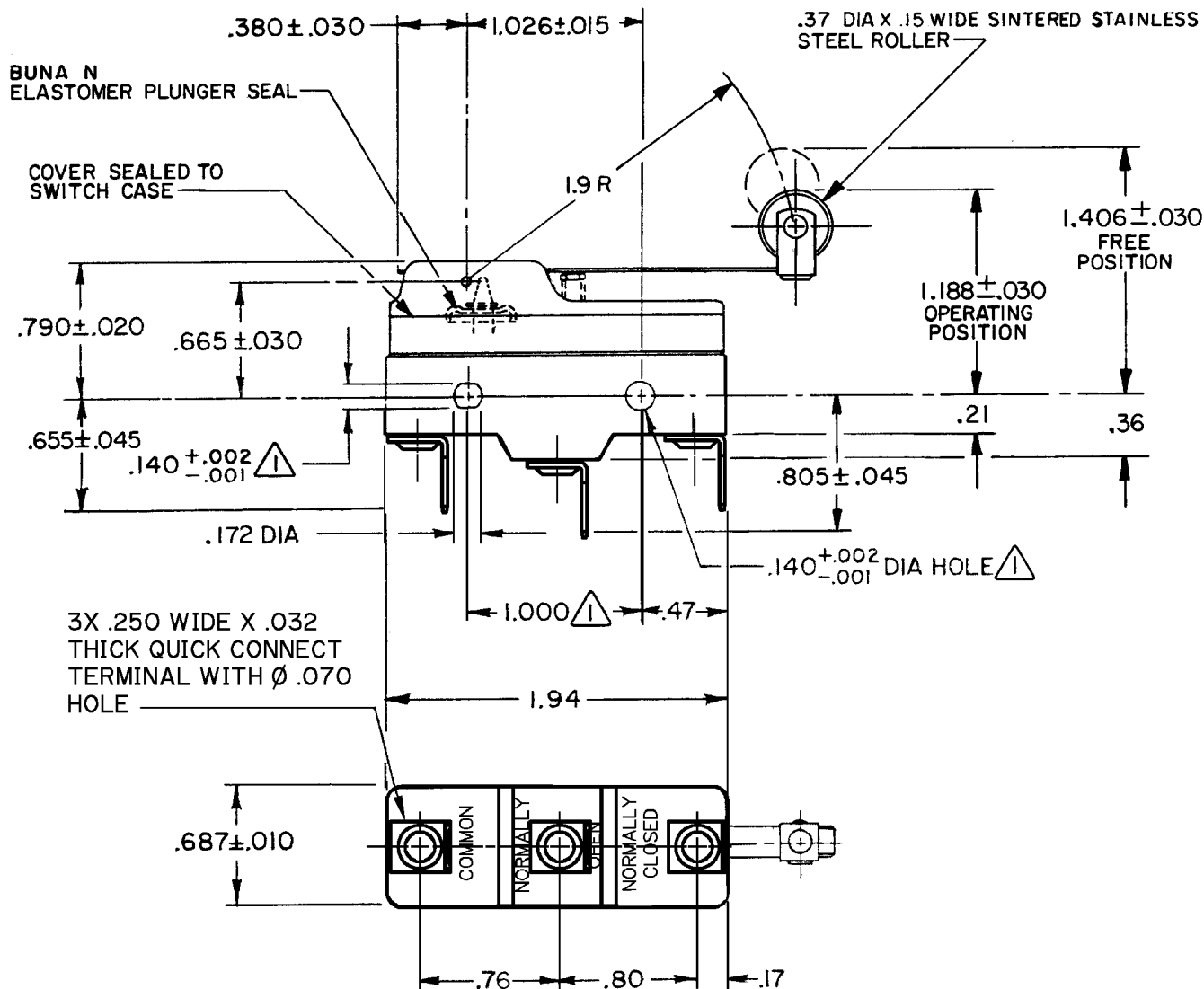
FREEPORT ILLINOIS, U.S.A  
A DIVISION OF HONEYWELL  
FED. MFG. CODE 91929

## SWITCH - BASIC

CATALOG LISTING

BZ-2RW825551-D6

APZ4260

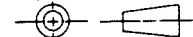


### NOTES

- ▲ MOUNTING HOLES WILL ACCEPT PINS OR SCREWS OF  $.139$  MAX DIA ON  $1.000 \pm .002$  CENTERS
- 2 - SEALED CONSTRUCTION PROVIDES SPLASH RESISTANCE

THIS DRAWING COVERS A PROPRIETARY ITEM AND IS THE PROPERTY OF MICRO SWITCH, A DIVISION OF HONEYWELL. THIS DRAWING IS NOT TO BE COPIED OR USED WITHOUT THE APPROVAL OF MICRO SWITCH.

THIRD ANGLE PROJECTION



### CHARACTERISTICS

OPERATING FORCE — — — 3 1/2 OZ MAX

RELEASE FORCE — — — 3/4 OZ MIN

DIFFERENTIAL TRAVEL — — .004 — .040

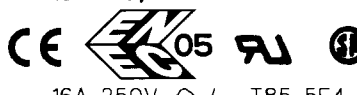
OVERTRAVEL — — — .156 MIN

### ELECTRICAL DATA

CONTACT ARRANGEMENT  
S P D T

L96 15A 125, 250 OR 480 VAC  
1/8 HP 125 VAC, 1/4 HP 250 VAC  
1/2A 125 VDC, 1/4A 250 VDC

L288  
L315  
L306



16A 250V ~ T85 5E4

SCALE FULL

DO NOT SCALE PRINT

TOLERANCES  
APPLY TO DESIGN UNITS. CONVERSIONS ARE ONLY FOR REFERENCE. UNLESS NOTED, TOLERANCES ARE  $\pm$

DIM.	TOL.	DIM.	TOL.
mm	mm/in	in	mm/in
NO PLACES	X	1/4	X
ONE PLACE	X,X	0.4/0.16	X,X
TWO PLACES	X,X,X	0.15/0.006	X,X,X
THREE PLACES	X,X,X,X	0.13/0.005	X,X,X,X
ANGLES			

SI METRIC  
DESIGN UNITS ☐

US CUSTOMARY  
☒

WEIGHT .079 LB

BZ-2RW825551-D6

PAGE 1 OF 1

REPLACES

RELEASE NO. PR-11683

DRAWING NUMBER

7

ISSUE

CHECK

### REVISIONS

A	C067209	J A P	MAY 90
B	CO-75204B	JWB	1 FEB 94
C	C080938	DLT	7 JUN 95
D	C093346	DLT	17 SEP 98
E	200763	C S L	10 JUL 00
F	0017579	KRB	08DEC05

CHECK

11 NOV 82

FORMTEK

FO-52848-A

DRAWN

CHECK

T M M II NOV 82

# Mouser Electronics

Authorized Distributor

Click to View Pricing, Inventory, Delivery & Lifecycle Information:

[Honeywell:](#)

[BZ-2RW825551-D6](#)