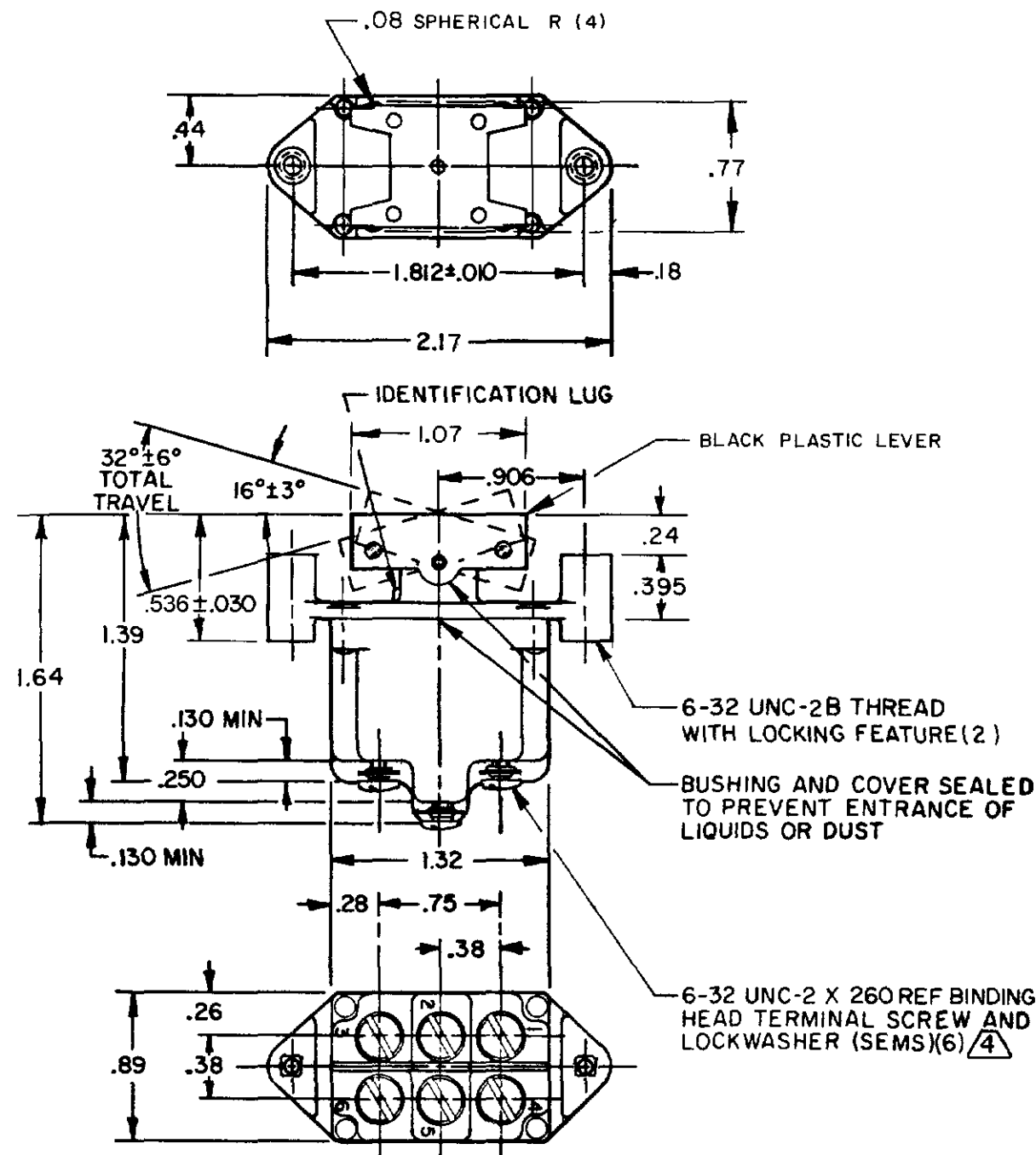


MICRO SWITCH
FREEPORT ILLINOIS U.S.A.
A DIVISION OF HONEYWELL
FED MFG CODE 81928**SWITCH- TOGGLE
FLUSH KEY**CATALOG LISTING
2TP8 SERIES
CHART 1

THIS DRAWING COVERS A PROPRIETARY ITEM AND IS THE PROPERTY OF MICRO SWITCH A DIVISION OF HONEYWELL THIS DRAWING IS NOT TO BE COPIED OR USED WITHOUT THE APPROVAL OF MICRO SWITCH.



CATALOG LISTING	3 CIRCUIT WITH BUTTON IN			ELECTRICAL DATA
	LUG SIDE (1-2, 4-5)	CENTER (1-2, 4-5)	OPPOSITE LUG (2-3, 5-6)	
2TP8-1	ON	OFF	ON	L 191 15A 125, 250, 277 VAC 1/2 HP 125 VAC, 1 HP 250, 277 VAC 5A 125 VAC "L"
2TP8-2	OFF	NONE	ON	
2TP8-3	ON	NONE	ON	
2TP8-21	NONE	OFF	ON	
①	NONE	ON	ON	
2TP8-4	MOM OFF	NONE	ON	L 192 10A 125, 250, 277 VAC 1/4 HP 125 VAC, 1/2 HP 250, 277 VAC 3A 125 VAC "L"
2TP8-5	MOM ON	OFF	ON	
2TP8-6	MOM ON	NONE	OFF	
2TP8-7	MOM ON	OFF	MOM ON	
2TP8-8	MOM ON	NONE	ON	
2TP8-51	NONE	ON	MOM ON	
2TP8-61	MOM ON	OFF	NONE	

NOTES

- 1 - THESE SWITCHES WILL WITHSTAND TEMPERATURE OF 160°F
- 2 - MICRO SWITCH CATALOG LISTING MARKED ON SIDE OF SWITCH
- 3 - APPLIES ONLY TO "ON" AND "MOMENTARY ON" POSITIONS
- 4 - SCREWS FURNISHED UNASSEMBLED

THIRD ANGLE PROJECTION	
SCALE FULL	
DO NOT SCALE PRINT	
TOLERANCES	
APPLY TO DESIGN UNITS. CONVERSIONS ARE ONLY FOR REFERENCE UNLESS NOTED TOLERANCES ARE 2	
NO PLACES	ONE PLACE
ONE PLACE	TWO PLACES
TWO PLACES	THREE PLACES
THREE PLACES	ANGLES
DESIGN UNITS	IN METRIC
DESIGN UNITS	US CUSTOMARY
RAW MATERIAL—COMMERCIAL STANDARD	
MICRO SWITCH STANDARDS APPLY	
DIMENSIONS ARE TO BE MET BEFORE	
PROTECTIVE COATINGS ARE APPLIED	
WEIGHT 14 LB EST	

Mouser Electronics

Authorized Distributor

Click to View Pricing, Inventory, Delivery & Lifecycle Information:

[Honeywell:](#)

[2TP8-1](#) [2TP8-2](#) [2TP8-3](#) [2TP8-5](#) [2TP8-7](#) [2TP8-8](#)