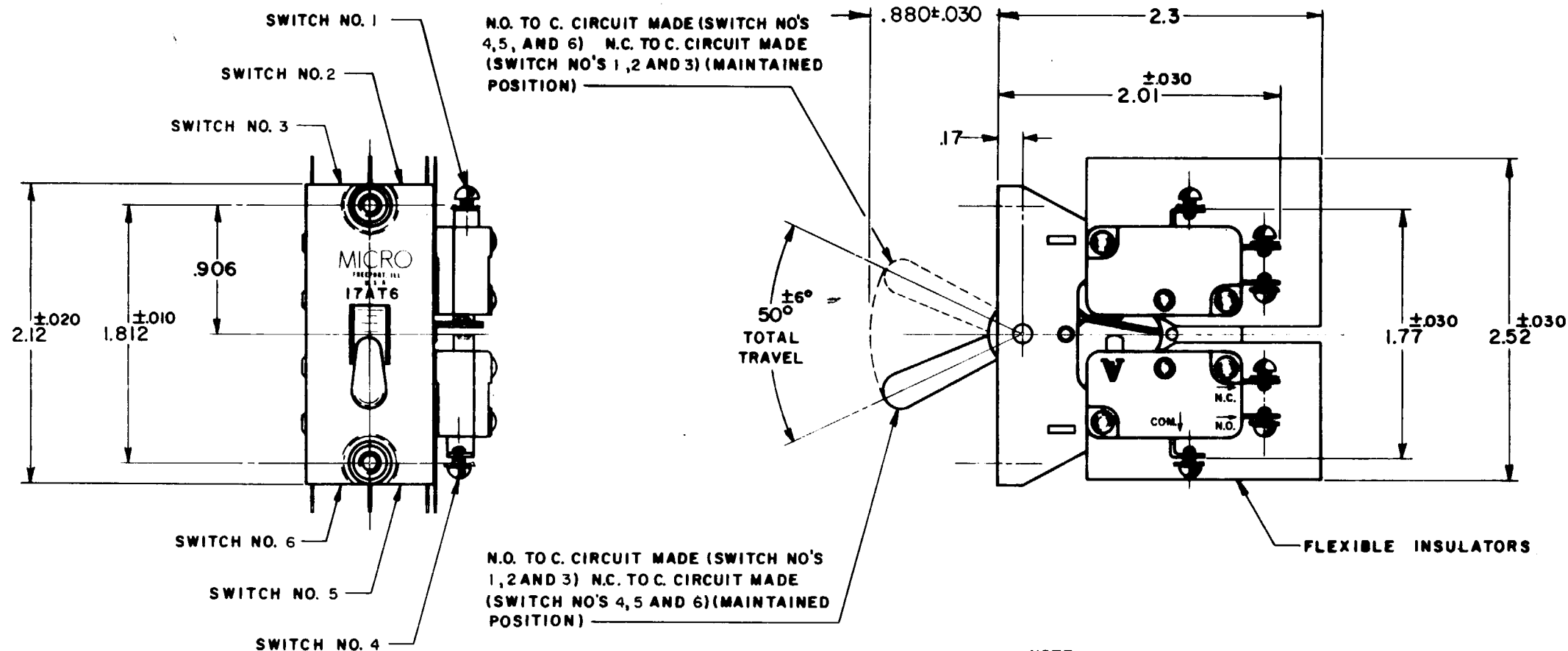
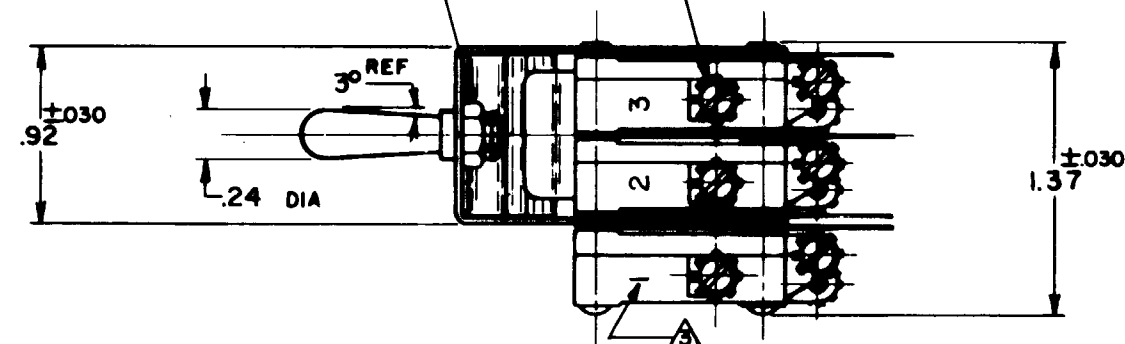


MICRO SWITCH

A DIVISION OF MINNEAPOLIS-HONEYWELL REGULATOR COMPANY
FREDERICK, ILLINOIS
FED. MFR. CODE 91929ASSEMBLY-
TOGGLE SWITCHCATALOG LISTING
17AT6

(2) 6-32 NC (LOCKING TYPE NUT)

4-40 NC X .125^{REF} ROUND HEAD TERMINAL
SCREWS AND LOCKWASHERS

NOTE-

- 1-UNIT INCLUDES (6) CAT. LIST. V3-201 BASIC SWITCHES
- 2-SWITCHES DO NOT OPERATE SIMULTANEOUSLY
- 3-BASIC SWITCH NUMBER INK STAMPED ON EACH BASIC SWITCH AND COVERED WITH CLEAR LACQUER

THIS DRAWING COVERS A PROPRIETARY ITEM AND IS THE PROPERTY OF MICRO SWITCH, A DIVISION OF HONEYWELL. THIS DRAWING IS NOT TO BE COPIED OR USED WITHOUT THE APPROVAL OF MICRO SWITCH.

CHARACTERISTICS

ELECTRICAL DATA

SCALE-FULL

CONTACT ARRANGEMENT
(6) S. P. D.T.BREAK DISTANCE
.040 APPROX.

DO NOT SCALE PRINT

UNLESS OTHERWISE
SPECIFIED

DIMENSIONS ARE IN INCHES

TOLERANCES ARE:

ONE PLACE	(.0)	±.030
TWO PLACE	(.00)	±.015
THREE PLACE	(.000)	±.005
ANGLES		±

WEIGHT 6.5 OZ MAX

©

15 A-1/3 HP-125 OR 250 VAC
1/2 A-125 VDC 1/4 A-250 VDC

17AT6

M

DRAWING
NUMBER

8

X

X

X

X

X

X

X

X

X

X

X

X

X

X

X

X

X

X

X

X

X

X

X

X

X

X

X

REPLACES

RELEASE NO. SR11208

CHECK

CHECK

CHECK

CHECK

CHECK

CHECK

CHECK

CHECK

CHECK

CHECK

CHECK

CHECK

CHECK

PC-80378.003

DRAWN

K L B 24 AUG 61

Mouser Electronics

Authorized Distributor

Click to View Pricing, Inventory, Delivery & Lifecycle Information:

[Honeywell:](#)

[17AT6](#)