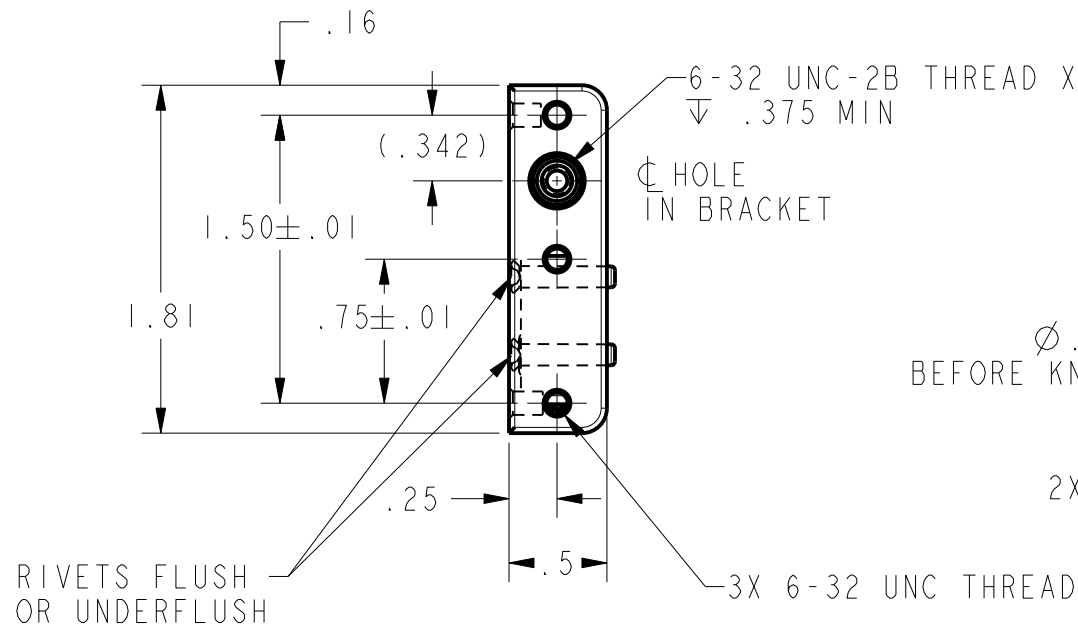


B



A

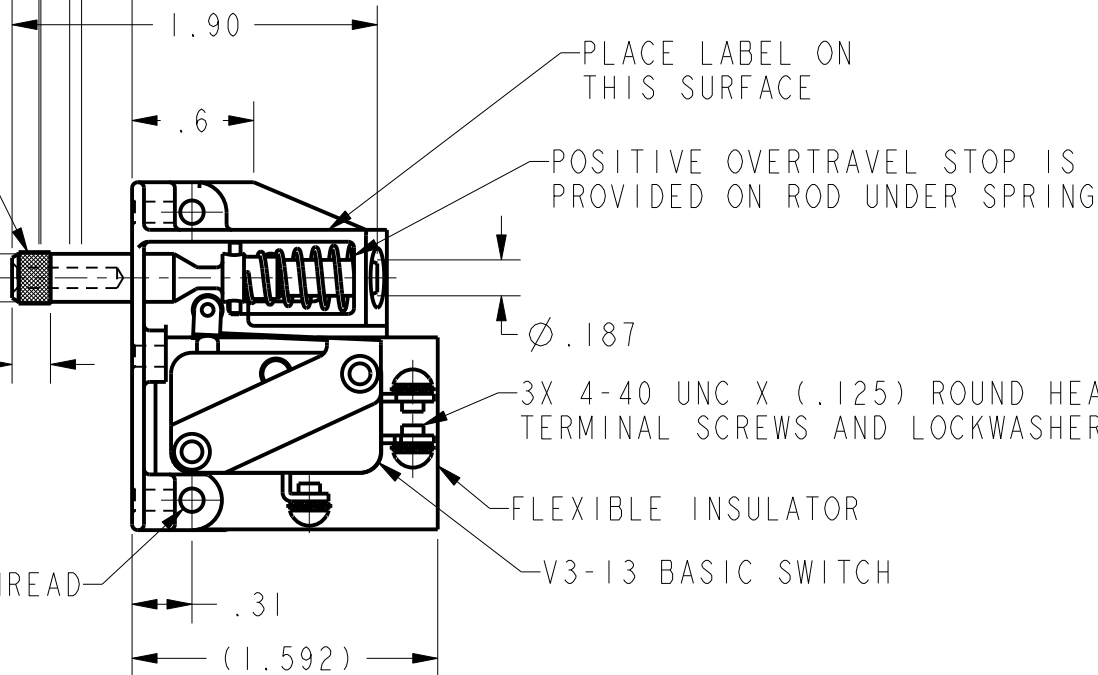
PUSH TO OPERATE- RETURNS AUTOMATICALLY  
TO POSITION SHOWN  
PUSH AND TURN (APPROXIMATELY 60° CLOCKWISE)  
TO LATCH. REMAINS IN OPERATED POSITION UNTIL  
RESET FOR AUTOMATIC RETURN BY NEXT PUSH  
OPERATION



Ø .250  
BEFORE KNURL

2X 6-32 UNC THREAD

.625 MAX FREE POSITION  
.485 MIN OPERATING POSITION  
.475 MAX LATCHED POSITION  
.325 MIN UNLATCH POSITION  
.263 MAX DEPRESSED POSITION



#### ELECTRICAL DATA

CONTACT ARRANGEMENT  
S P D T


15.1A 1/2HP 125, 250 VAC  
1/2A 125 VDC, 1/4A 250 VDC  
5A 125 VAC "L"

#### CHARACTERISTICS

TOTAL TRAVEL - .360 APPROX  
FULLY DEPRESSED FORCE - 4 LBS MAX

#### NOTES

- 1 - PLASTIC PARTS ARE MADE OF MINERAL FILLED PHENOLICS
- 2 - WITH ROD IN ACTUATED POSITION, BASIC SWITCH PLUNGER MUST HAVE .010 MIN OVERTRAVEL AND WITH ROD IN FREE POSITION BASIC SWITCH PLUNGER MUST HAVE .005 MIN RELEASE TRAVEL
- 3 - PLUNGER MUST BE DEPRESSED TO WITHIN .325 FROM THE FRONT SURFACE OF MOUNTING BRACKET TO ASSURE RESET FOR AUTOMATIC RETURN

DESIGN UNITS: INCH TOLERANCES UNLESS NOTED:	DRAWN	SS	25JAN08	<div>Honeywell</div>				
	CHECK	BLR	25JAN08					
NO PLACES X ± -	THIS DRAWING COVERS A PROPRIETARY ITEM AND IS THE PROPERTY OF HONEYWELL. THIS DRAWING IS NOT TO BE COPIED OR USED WITHOUT THE PERMISSION OF HONEYWELL.			TITLE <div>ASSEMBLY, SWITCH</div>				
ONE PLACE .X ± 0.030								
TWO PLACE .XX ± 0.015								
THREE PLACE .XXX ± 0.005	INTERPRET PER ANSI Y14.5M-1982 OTHER HONEYWELL ENGINEERING STANDARDS MAY APPLY			SIZE	TYPE	CAGE CODE	DRAWING NAME	REV
ANGLES X ± -				B	I	-	13AC1	11
THIRD ANGLE PROJECTION 	Pro/ENGINEER 3D			SCALE 1:1		SHEET 1 OF 1		

4

3



2

1

# Mouser Electronics

Authorized Distributor

Click to View Pricing, Inventory, Delivery & Lifecycle Information:

[Honeywell:](#)

[13AC1](#)