

REV	DOCUMENT	CHANGED BY	CHECK
1	201373	TRF 22SEP00	SAV
2	203123	GJW 01JUN01	SAV

## SERIES

UNAMPLIFIED  
COMPENSATED AND  
CALIBRATED (mV)

## PRESSURE RANGE

004, 010 IN H<sub>2</sub>O D

00.3, 01, 05, 15, 30,  
60, 100, 150, 240 PSID

### ACCURACY GRADE

**C** - COMMERCIAL (1.0%)

**H** - HIGH GRADE (0.50%)

## PACKAGE TYPE

**N** - PLASTIC

## PRESSURE REFERENCE

**D** - DIFFERENTIAL

## NOTES

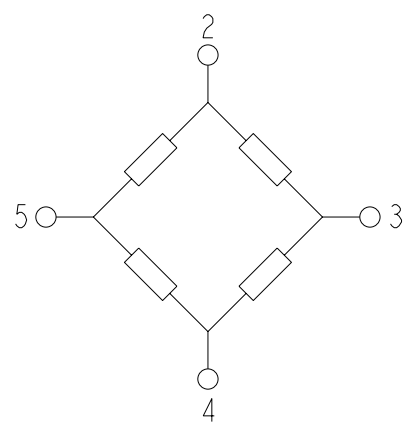
ALL PARAMETERS ARE MEASURED AT 12 VDC EXCITATION. APPLY POSITIVE PRESSURE TO PORT 2 FOR POSITIVE GOING OUTPUT

△<sub>2</sub> SHIFT IS RELATIVE TO 25°C

3 LINEARITY IS DETERMINED USING BEST STRAIGHT LINE FIT THROUGH ZERO, 1/2 FULL SCALE, AND FULL SCALE; HYSTERESIS IS MECHANICAL ONLY

4 - SPAN IS THE ALGEBRAIC DIFFERENCE BETWEEN OFFSET VOLTAGE AND THE VOLTAGE AT FULL SCALE PRESSURE

5 PRESSURE RANGE DEPICTS THE FULL SCALE PRESSURE OF THE SENSOR



PIN OUT	
1	N/C
2	+V EXCITATION
3	+ OUTPUT SIGNAL
4	-V EXCITATION
5	- OUTPUT SIGNAL
6	N/C

## C - GRADE LISTINGS

XCXL004DNC
XCXL010DNC
XCX00.3DNC
XCX01DNC
XCX05DNC
XCX15DNC
XCX30DNC
XCX60DNC
XCX100DNC
XCX150DNC
XCX240DNC

## H - GRADE LISTINGS

XCXL004DNH
XCXL010DNH
XCX00.3DNH
XCX01DNH
XCX05DNH
XCX15DNH
XCX30DNH
XCX60DNH
XCX100DNH
XCX150DNH
XCX240DNH

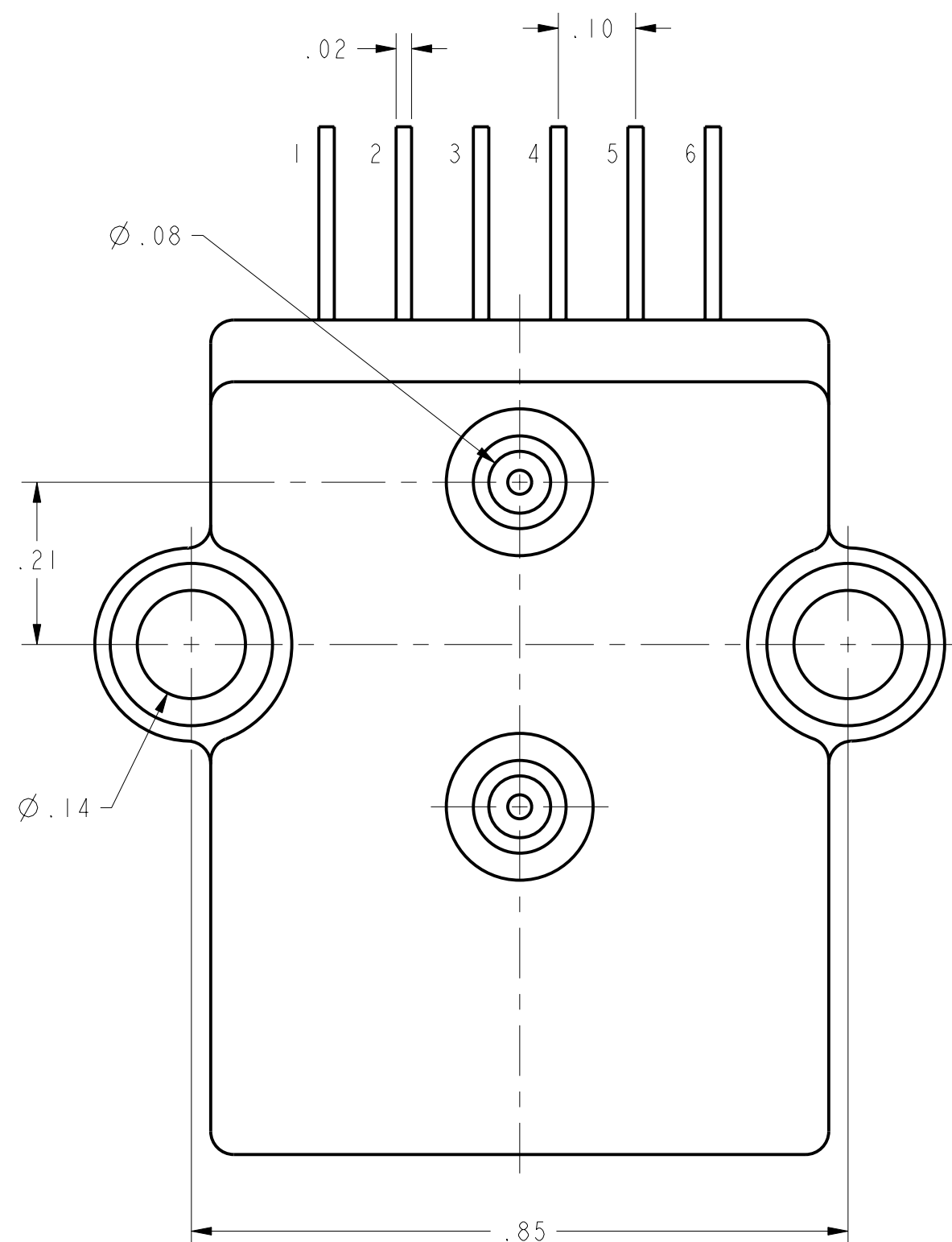
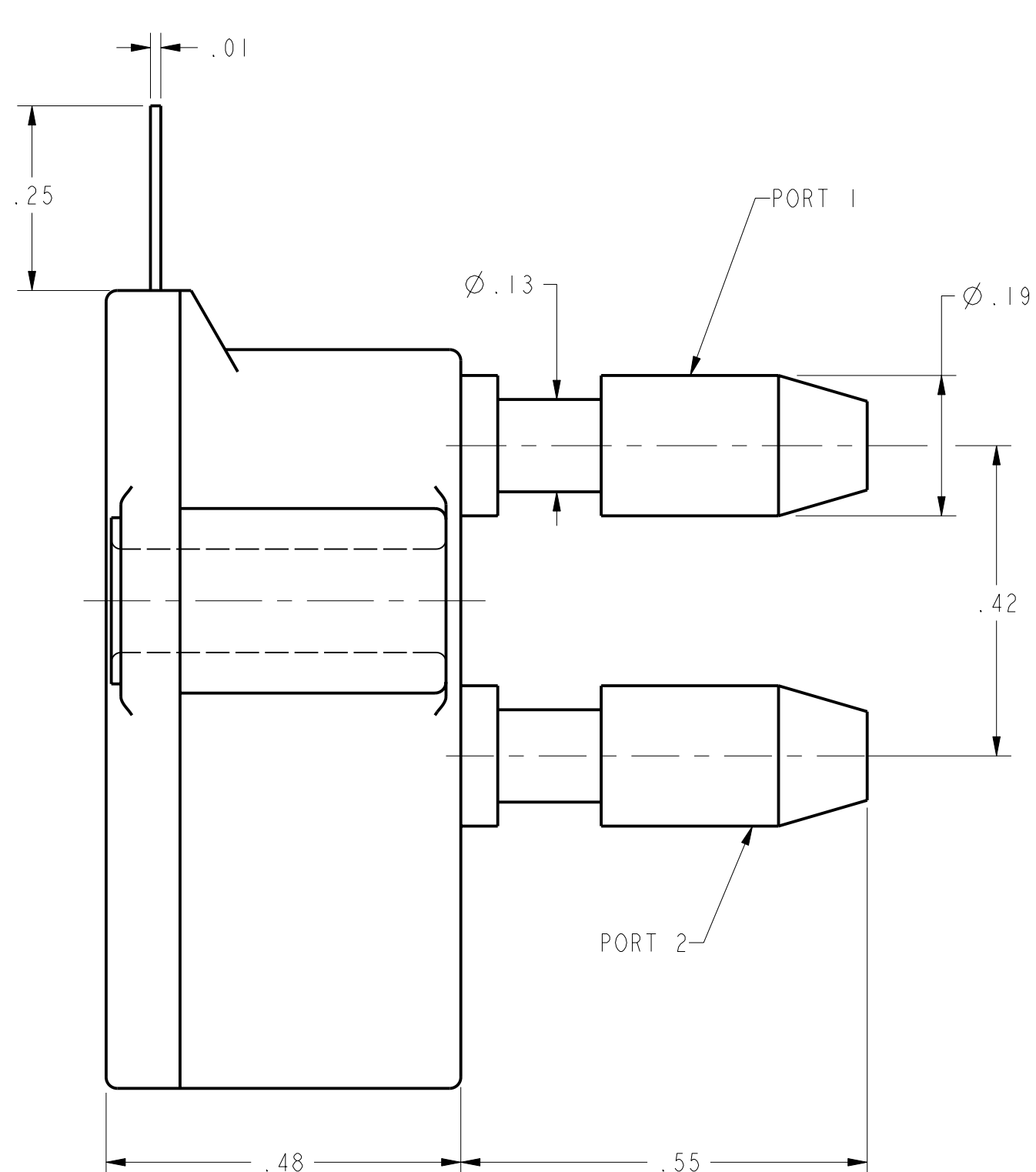
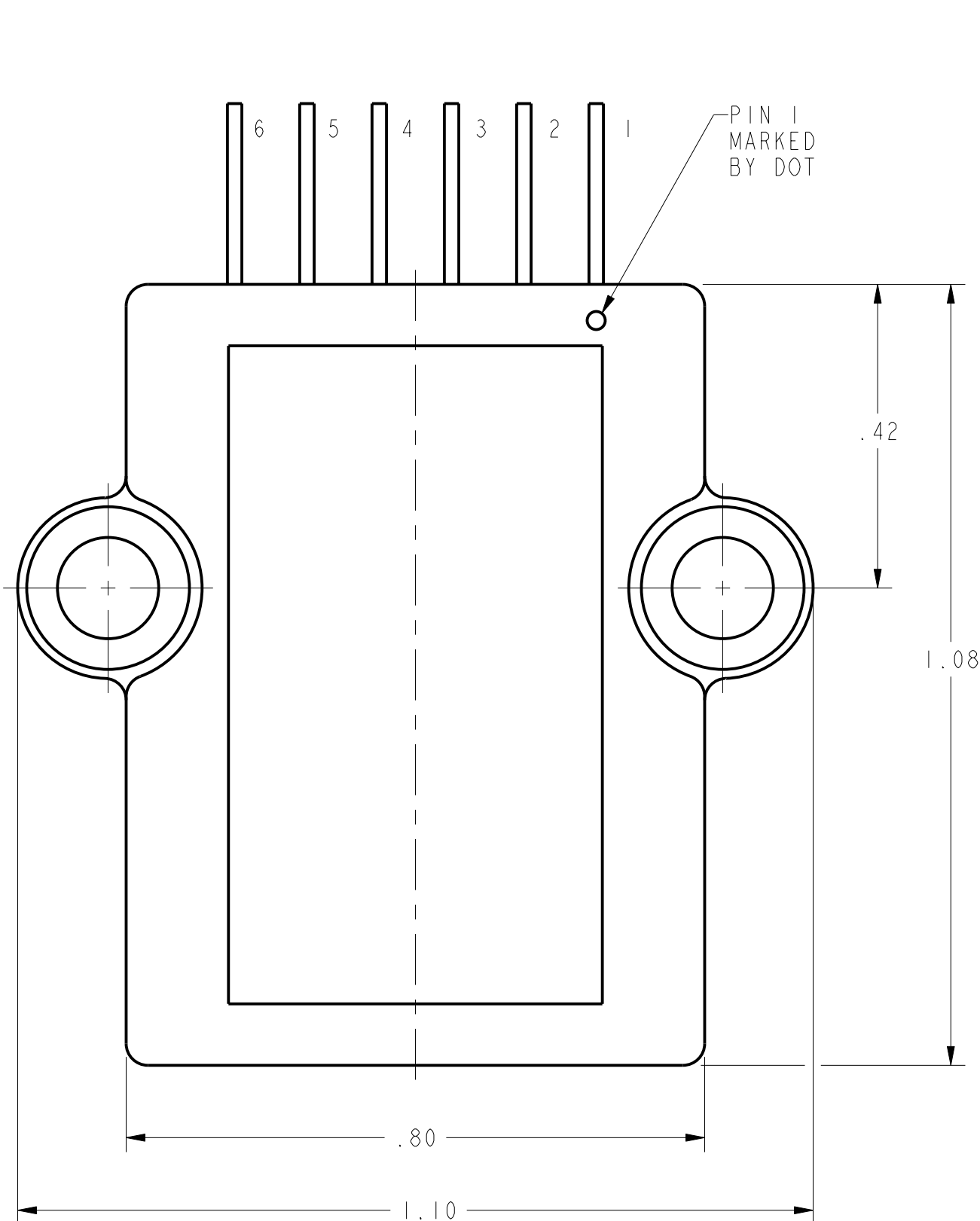
PARAMETERS $\Delta 1$	PRESSURE RANGE	C GRADE				H GRADE				PROOF PRESSURE
		MIN	NOM	MAX	UNITS	MIN	NOM	MAX	UNITS	
OFFSET VOLTAGE (0 IN H <sub>2</sub> O DIFF)	ALL	-1.0	0.0	1.0	mV	-0.3	0.0	0.3	mV	5 PSID 5 PSID 5 PSID 15 PSID 45 PSID 90 PSID 180 PSID 200 PSID 300 PSID 300 PSID
SPAN (P2>P1)	4 IN H <sub>2</sub> O	38.0	40.0	42.0	mV				mV	
	10 IN H <sub>2</sub> O	19.0	20.0	21.0	mV	19.8	20.0	20.2	mV	
	0.3 PSID	19.0	20.0	21.0	mV	19.8	20.0	20.2	mV	
	1 PSID	17.0	18.0	19.0	mV	17.8	18.0	18.2	mV	
	5 PSID	57.0	60.0	63.0	mV	59.0	60.0	61.0	mV	
	15 PSID	85.0	90.0	95.0	mV	89.0	90.0	91.0	mV	
	30 PSID	85.0	90.0	95.0	mV	89.0	90.0	91.0	mV	
	60 PSID	85.0	90.0	95.0	mV	89.0	90.0	91.0	mV	
100 PSID	95.0	100.0	105.0	mV	99.0	100.0	101.0	mV	200 PSID	
150 PSID	85.0	90.0	95.0	mV	89.0	90.0	91.0	mV	300 PSID	
240 PSID	95.0	100.0	105.0	mV	99.0	100.0	101.0	mV	300 PSID	
COMBINED LINEARITY AND HYSTERESIS $\Delta 3$	ALL	---	0.5	1.0	%SPAN	---	0.3	0.5	%SPAN	
INPUT RESISTANCE	ALL	---	15	---	K $\Omega$	---	15	---	K $\Omega$	
TEMPERATURE ERROR ON OFFSET (0° TO 50°C) $\Delta 2$	4 IN H <sub>2</sub> O	---	---	1.0	mV	---	---	0.5	mV	
TEMPERATURE ERROR ON OFFSET (0° TO 70°C) $\Delta 2$	ALL EXCEPT 4 IN H <sub>2</sub> O	---	---	1.0	mV	---	---	0.5	mV	
TEMPERATURE ERROR ON SPAN (0° TO 50°C) $\Delta 2$	4 IN H <sub>2</sub> O	---	---	2.0	%SPAN	---	---	1.0	%SPAN	
TEMPERATURE ERROR ON SPAN (0° TO 70°C) $\Delta 2$	ALL EXCEPT 4 IN H <sub>2</sub> O	---	---	2.0	%SPAN	---	---	1.0	%SPAN	
REPEATABILITY	ALL	---	0.1	---	%SPAN	---	0.1	---	%SPAN	


EXCITATION VOLTAGE	ALL	3	12	16	VDC
COMPENSATED TEMPERATURE RANGE	ALL	0	25	70	°C
STORAGE TEMPERATURE RANGE	ALL	-40	---	125	°C
RELATIVE HUMIDITY (NON-CONDENSING)	ALL	0	---	95	%RH
SHOCK (DURATION 11 msec ANY AXIS)	ALL	---	---	10	g
COMMON MODE PRESSURE	ALL	---	---	50	PSIG

## MEDIA CAPABILITY, WETTED MATERIALS

(APPLY CLEAN DRY AIR ONLY)

PRESSURE PORT 2	SILICON DIAPHRAGM, GLASS FILLED NYLON, AND ALUMINA CERAMIC. PORT NOT USED FOR ABSOLUTE DEVICES
PRESSURE PORT 1	FRONTSIDE OF SILICON DIAPHRAGM, SILICONE GEL PASSIVATION, GLASS FILLED NYLON, ALUMINA.



UNLESS OTHERWISE SPECIFIED TOLERANCES ARE: <input checked="" type="checkbox"/> DECIMAL <input type="checkbox"/> FRACTIONAL <input type="checkbox"/> MIXED		DRAWN		TRF		22SEP00		<h1>Honeywell</h1> <p>Sensing and Control</p> <h2>PRESSURE SENSOR</h2>	
NO PLACE .X ±.040 ±1		CHECK		SAV		22SEP00			
ONE PLACE .X ±.030 ±0.4		THIS DRAWING COVERS A PROPRIETARY ITEM AND IS THE PROPERTY OF HONEYWELL SENSING AND CONTROL. THIS DRAWING IS NOT TO BE COPIED OR USED WITHOUT THE PERMISSION OF HONEYWELL.							
TWO PLACE .XX ±.015 ±0.15									
THREE PLACE .XXX ±.005 ±		TITLE		PRESSURE SENSOR					
ANGLES ±		SIZE		DWG TYPE		DRAWING NAME			
RAW MATERIAL-COMMERCIAL STANDARD		D		M		CXCX DIF SERIES CHART 1			
THIRD ANGLE PROJECTION		PTC 3D		ASME Y14.5M-1994		SCALE		5;1	
		DIMENSIONS ARE TO BE MET BEFORE PROTECTIVE COATINGS ARE APPLIED				WEIGHT		SHEET 1 OF 1	

# Mouser Electronics

Authorized Distributor

Click to View Pricing, Inventory, Delivery & Lifecycle Information:

Honeywell:

[XCXL004DNC](#) [XCXL010DNC](#)