

4HS4-918

PAGE 1 OF 1

M

DRAWING
NUMBER

8

14

8

14

ISSUE

10

REVISIONS

A	CO15761	OMW	28 APR 61
B	CO51690-D	RJH	22 APR 83
C	CO55162-B	KEW	5 OCT 84
D	CO61043	TSK	29 AUG 88
E	CO72580	DAW	20 AUG 92
F	CO73625	JDB	9 JULY 93
G	CO-94122	TSM	12 MAR 99

REPLACES

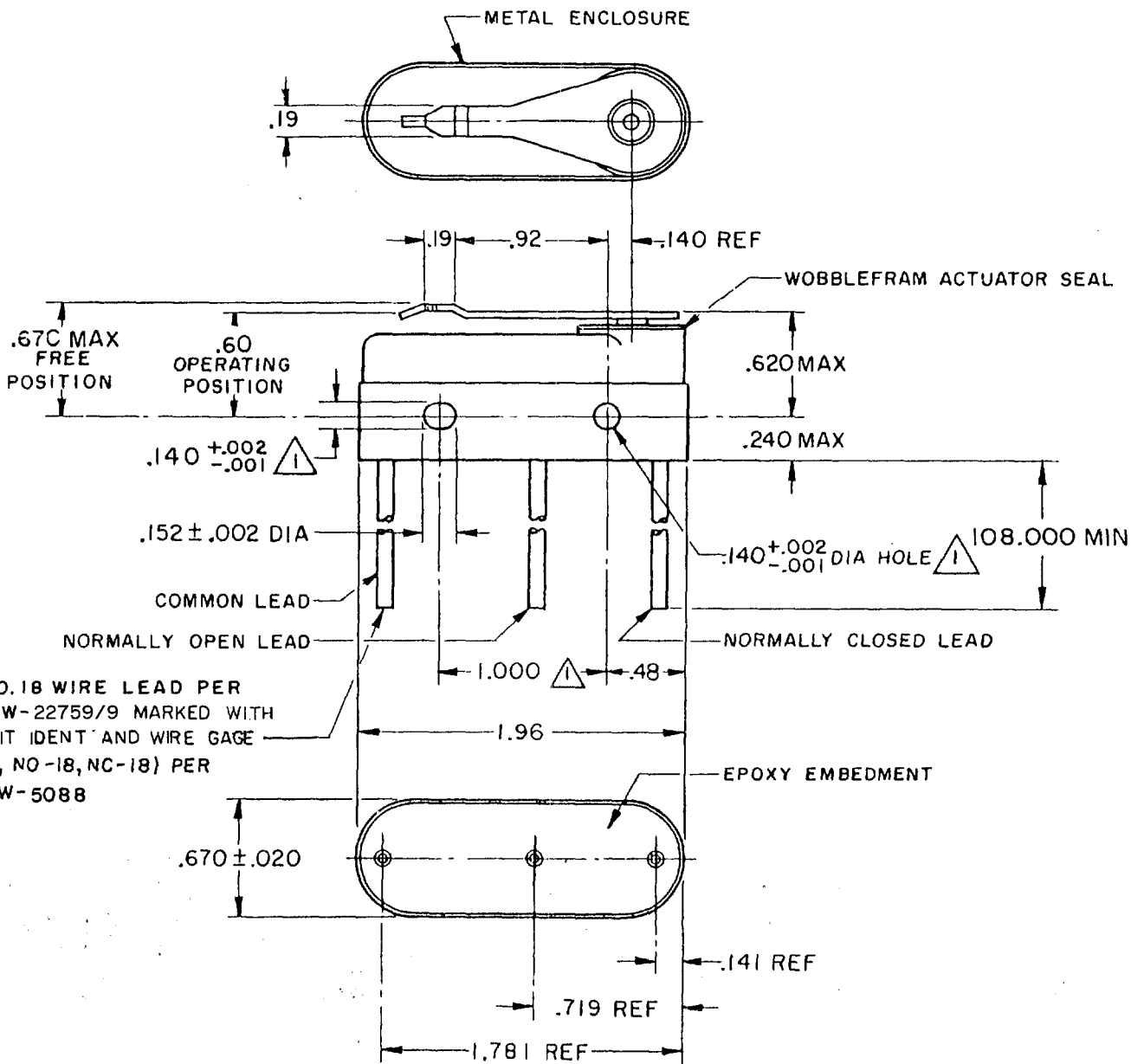
RELEASE NO.

CHECK

CHECK

CHECK

CHECK



NOTE -

- MOUNTING HOLES WILL ACCEPT PINS OR SCREWS OF .139 MAX DIA ON 1.000 $\pm .002$ CENTERS
- FOR USE IN AMBIENT TEMPERATURE RANGE FROM MINUS 65°F TO PLUS 250°F
- WEIGHT OF SWITCH ONLY IS 1.5 OZ MAX WEIGHT OF CONDUCTOR GROUP ONLY IS 0.5 OZ MAX PER FOOT

THIS DRAWING COVERS A PROPRIETARY ITEM AND IS THE PROPERTY OF MICRO SWITCH, A DIVISION OF MINNEAPOLIS-HONEYWELL REGULATOR CO. THIS DRAWING IS NOT TO BE COPIED OR USED WITHOUT THE APPROVAL OF MICRO SWITCH.

CHARACTERISTICS	ELECTRICAL DATA			SCALE FULL
OPERATING FORCE ----- 10-22 OZ	CONTACT ARRANGEMENT S P D T		BREAK DISTANCE	DO NOT SCALE PRINT
RELEASE FORCE ----- 4 OZ MIN	LINE VOLTAGE	INDUCTIVE LOAD	RESISTIVE LOAD	UNLESS OTHERWISE SPECIFIED DIMENSIONS ARE IN INCHES TOLERANCES ARE:
PRETRAVEL ----- .065 MAX	28 VDC	8 AMP	15 AMP	ONE PLACE (.0) $\pm .030$
DIFFERENTIAL TRAVEL ----- .020 MAX	125 VAC	1 AMP	.5 AMP	TWO PLACE (.00) $\pm .015$
OVERTRAVEL ----- .010 MIN				THREE PLACE (.000) $\pm .005$
				ANGLES \pm
				WEIGHT \pm

FO-50378
FORMTEK

DRAWN

OMW 28 APR 61

Mouser Electronics

Authorized Distributor

Click to View Pricing, Inventory, Delivery & Lifecycle Information:

[Honeywell:](#)

[4HS4-918](#)