

5

# MICRO SWITCH

A DIVISION OF MINNEAPOLIS-HONEYWELL REGULATOR COMPANY  
PREPONT, ILLINOIS  
FED. MFR CODE 91929

## ACTUATOR - SWITCH

CATALOG LISTING

JS-2

(M) JS-2  
ISSUE 4

REPLACES

RELEASE NO.

JS-2

M

DRAWING  
NUMBER

ISSUE

9

18

28

38

48

58

68

78

88

98

108

118

128

138

148

158

168

178

188

198

208

218

228

238

248

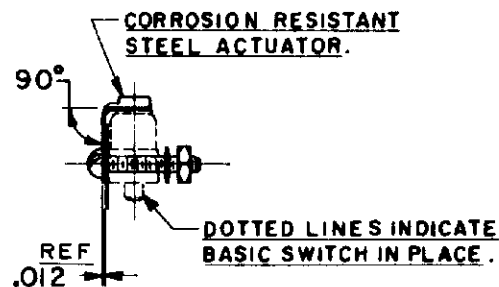
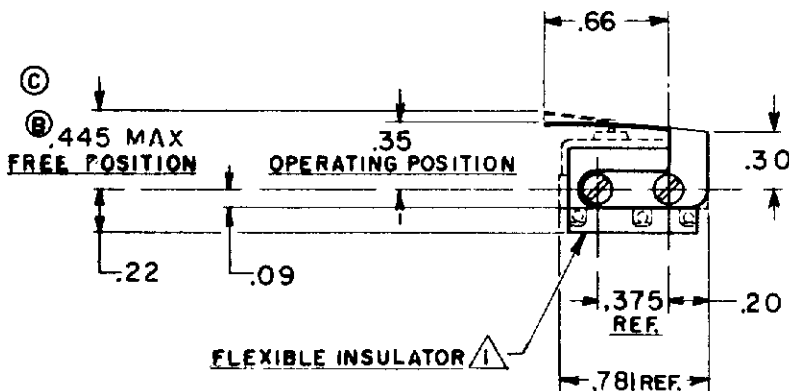
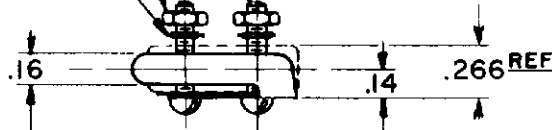
258

268

2X 2-56 NC HEX NUT

2X 2-56 NC x .500<sup>REF</sup> ROUND HEAD MACHINE SCREW

2X LOCKWASHER



NOTE -  
FURNISHED UNASSEMBLED

THIS DRAWING COVERS A PROPRIETARY ITEM AND IS THE PROPERTY OF MICRO SWITCH A DIVISION OF HONEYWELL. THIS DRAWING IS NOT TO BE COPIED OR USED WITHOUT THE APPROVAL OF MICRO SWITCH

### CHARACTERISTICS WITH ISM SWITCH INSTALLED

OPERATING FORCE - - - 10 OZ. MAX.

RELEASE FORCE - - - (C) 2 OZ. MIN.

PRETRAVEL - - - .078 MAX.

DIFFERENTIAL TRAVEL - - - 0.5 MAX

OVERTRAVEL - - - 0.5 MIN.

(B)

### ELECTRICAL DATA

CONTACT ARRANGEMENT

BREAK DISTANCE

### SCALE FULL

DO NOT SCALE PRINT

UNLESS OTHERWISE SPECIFIED  
DIMENSIONS ARE IN INCHES  
TOLERANCES ARE:

ONE PLACE (0) ±.030  
TWO PLACE (00) ±.015  
THREE PLACE (.000) ±.005  
ANGLES ±2°

WEIGHT

DRAWN

KFM 3 FEB 56

CHECK 10 FEB 56

CHECK 17 MAY 80

DLT 7 MAR 85

# Mouser Electronics

Authorized Distributor

Click to View Pricing, Inventory, Delivery & Lifecycle Information:

[Honeywell:](#)

[JS-2](#)