

MICRO SWITCH

A DIVISION OF MINNEAPOLIS-HONEYWELL REGULATOR COMPANY
PINEBROOK, ILLINOIS

FED. MFR. CODE 91929

ASSEMBLY -
TOGGLE SWITCH

CATALOG LISTING

IIAT20

(M) IIAT20
ISSUE 3

REPLACES

RELEASE NO.

CHECK

CHECK

CHECK

CHECK

DRAWN

K L B

CATALOG LISTING
IIAT20
PAGE 1 OF 1

M

DRAWING
NUMBER

9

ISSUE

REVISIONS

A CO 16255

K L B

15 SEP 61

B CO16594

D W V

3 JAN 62

C CO17248

M B F

23 AUG 62

D CO-58771

KAG

12 FEB 66

E CO59602

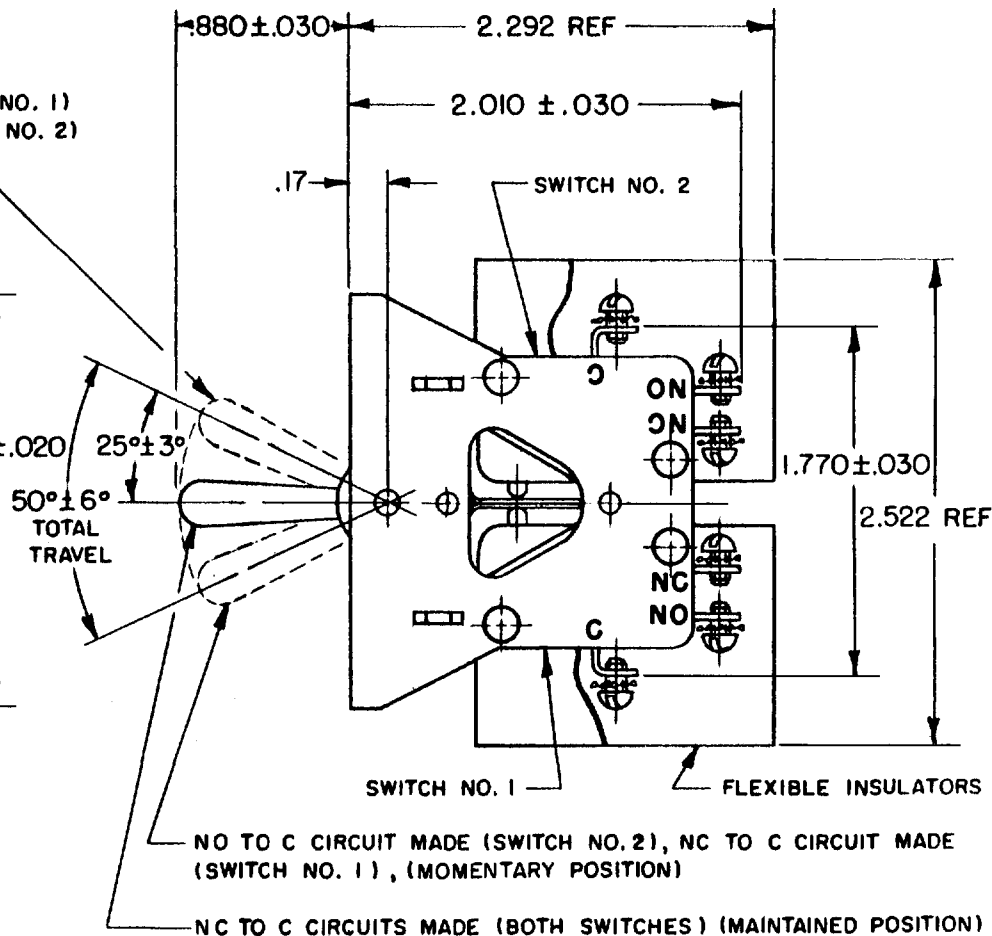
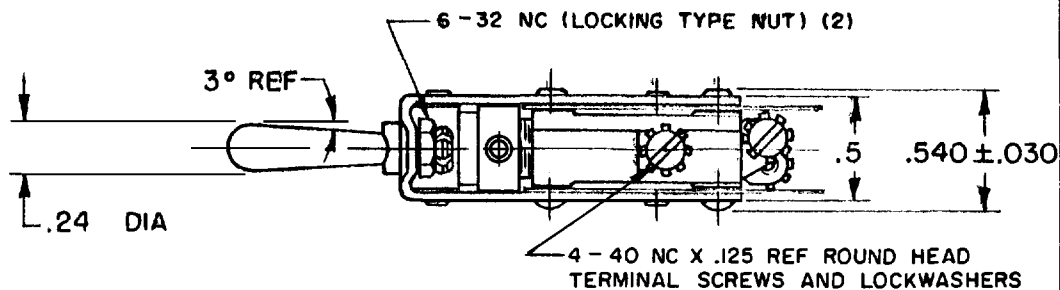
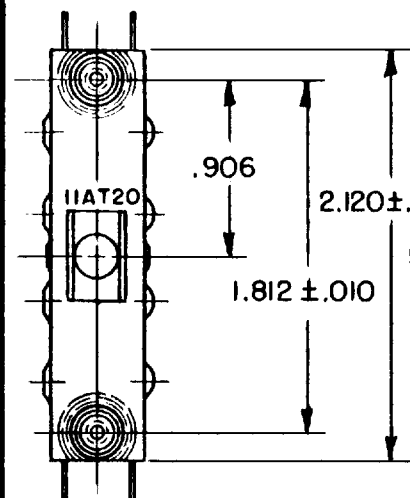
KAG

7 AUG 66

F 204266

CSL

5 NOV 01

NO TO C CIRCUIT MADE (SWITCH NO. 1)
NC TO C CIRCUIT MADE (SWITCH NO. 2)
(MOMENTARY POSITION)NO TO C CIRCUIT MADE (SWITCH NO. 2), NC TO C CIRCUIT MADE
(SWITCH NO. 1), (MOMENTARY POSITION)

NC TO C CIRCUITS MADE (BOTH SWITCHES) (MAINTAINED POSITION)

NOTE

1 - UNIT INCLUDES CATALOG LISTING V3-201 BASIC SWITCH (2)

THIS DRAWING COVERS A PROPRIETARY ITEM AND IS THE PROPERTY OF MICRO SWITCH, A DIVISION OF MINNEAPOLIS-HONEYWELL REGULATOR CO. THIS DRAWING IS NOT TO BE COPIED OR USED WITHOUT THE APPROVAL OF MICRO SWITCH.

CHARACTERISTICS

ELECTRICAL DATA

SCALE FULL

CONTACT ARRANGEMENT
S P D T (2)BREAK DISTANCE
.040 APPROX

DO NOT SCALE PRINT

UNLESS OTHERWISE
SPECIFIED
DIMENSIONS ARE IN INCHES
TOLERANCES ARE:
ONE PLACE (.0) ±.030
TWO PLACE (.00) ±.015
THREE PLACE (.000) ±.005
ANGLES ±

WEIGHT .156 LB

15 A - 1/3 HP - 125 OR 250 VAC
1/2 A - 125 VDC; 1/4 A - 250 VDC

FO-80378

RASTER

Mouser Electronics

Authorized Distributor

Click to View Pricing, Inventory, Delivery & Lifecycle Information:

[Honeywell:](#)

[11AT20](#)