

FED. MFG. CODE 91929

ACTUATOR-SWITCH

CATALOG LISTING

JS-307

CBV-9938

JG-22953

JS-307



**DRAWING
NUMBER**

ISSUE	7
	8
	9
	10
	11
	12
	13
	14
	15
	16
	17
	18
	19
	20
	21
	22
	23
	24
	25
	26
	27
	28
	29
	30
	31
	32
	33
	34
	35
	36
	37
	38
	39
	40
	41
	42
	43
	44
	45
	46
	47
	48
	49
	50
	51
	52
	53
	54
	55
	56
	57
	58
	59
	60
	61
	62
	63
	64
	65
	66
	67
	68
	69
	70
	71
	72
	73
	74
	75
	76
	77
	78
	79
	80
	81
	82
	83
	84
	85
	86
	87
	88
	89
	90
	91
	92
	93
	94
	95
	96
	97
	98
	99
	100

REVISIONS

A	PR-1924
	L S D 14 JUL 71
B	C029325
	L S D 28 AUG 71
C	C066329
	TSM 15 MAR 91
D	C05DW6 C073449
	C S L 11 NOV 92
E	REINST. C078172
	S A D 10 AUG 94
F	0031713
	JA 20JUN07

FO-50378-1A

DRAWN

REPLACES

RELEASE NO. PR-1924

PSR | 20JUN07

CHECK

69 1d3

ה

543

CHECK

69 LPT

၆၇၈

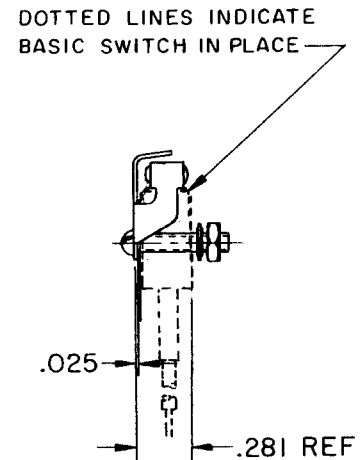
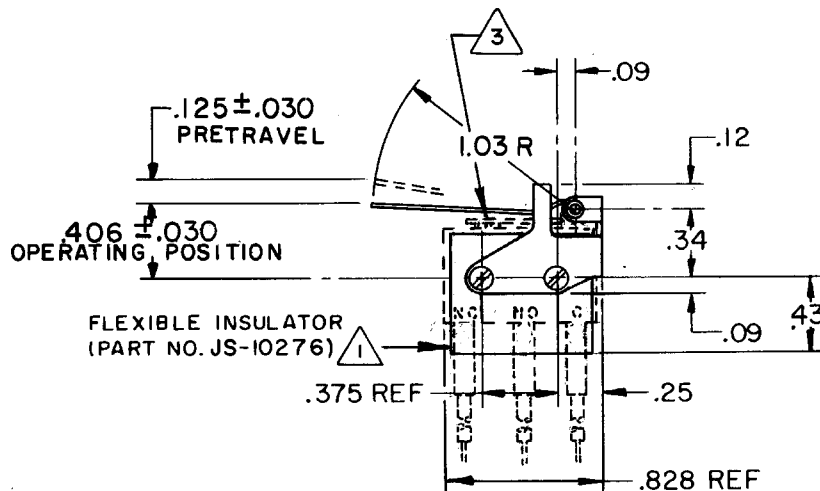
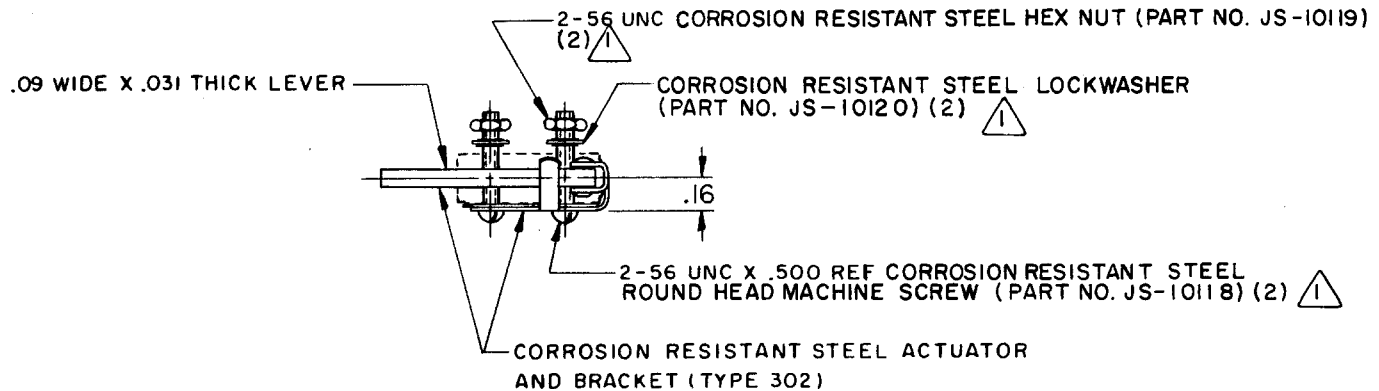
34A

CHECK

AUG 69

20 A

FD-36



NOTE -

- 1 FURNISHED UNASSEMBLED
 - 2 CHARACTERISTICS WITH 6HMI-1
 - 3 BASIC SWITCH INSTALLED
- ADJUSTMENT CAUTION: DO NOT ALLOW ACTUATOR LEVER TO COME IN CONTACT WITH HM LEVER TO PREVENT SWITCH SEAL DAMAGE

THIS DRAWING COVERS A PROPRIETARY ITEM AND IS THE PROPERTY OF MICRO SWITCH, A DIVISION OF HONEYWELL. THIS DRAWING IS NOT TO BE COPIED OR USED WITHOUT THE APPROVAL OF MICRO SWITCH.

CHARACTERISTICS	2	ELECTRICAL DATA	SCALE FULL
OPERATING FORCE — — 1.50 OZ MAX		CONTACT ARRANGEMENT	DO NOT SCALE PRINT
RELEASE FORCE — — — 4 GRAM MIN			UNLESS OTHERWISE NOTED
DIFFERENTIAL TRAVEL — — — .056 MAX			DIMENSIONS ARE IN INCHES
OVERTRAVEL — — — — .025 MIN			TOLERANCES ARE:
			ONE PLACE (.0) ± .030
			TWO PLACE (.00) ± .015
			THREE PLACE (.000) ± .005
			ANGLES ±
			WEIGHT

Mouser Electronics

Authorized Distributor

Click to View Pricing, Inventory, Delivery & Lifecycle Information:

[Honeywell:](#)

[JS-307](#)